

Cox Arboretum MetroPark Tree Tower Recoat Project

Project 24-004

Project Description

The project includes the surface preparation, re-staining and caulking of the Tree Tower at Cox Arboretum MetroPark.

Project Details

Contractor to provide all labor, equipment and materials required to complete the project. The elevation of the top platform of the tree tower is 48' above grade with the top of the roof at approximately 65'.

Existing Coating

The tree tower was initially coated in the spring of 2018 using the following product:

The wood railings and columns received two coats of PPG Sikken's ProLuxe Cetol 1 (butternut)
The landings and treads received one coat of PPG SRD (Butternut) Wood Finish.

Surface Preparation

Contractor shall hand scrape any peeling finish prior to general surface preparation. Working from the bottom, contractor to apply a cleaning solution of four (4) ounces of 100% powdered Tri-Sodium Phosphate (TSP) with three (3) quarts of water to the wood surfaces with a garden sprayer or a heavy nap roller cover. Scrub surface with a hard bristle brush as needed to help remove mill glaze or weathering. Do not allow solution to dry on the wood surface. Power-wash wood surface with clean fresh water using 500-800 psi with the nozzle 8-12 inches away to remove cleaning solution. Allow the surface to dry for 48 hours, or to have a moisture content of 18% or less before application. Contractor to test new coating to ensure existing surfaces have been properly prepared.

Contractor shall contact staff to ensure plants around the tower are sufficiently watered to help prevent damage from the TSP. Contractor shall cover and protect surrounding plants from contact with TSP.

Stair Tread Covers do not need to be removed.

New Coating

Coating basis for design is Sashco products. Products are available from authorized retailers including: Log Home Center- 800-773-6223, Noblesville, Indiana or Discount Log Home Supplies-330-275-5214, Sugarcreek, Ohio.

For all non-walking surfaces, including columns, non-painted handrails, roof structure and bracing shall be coated with Transformation Stain- Log and Timber color Redwood. Contractor shall prepare product and apply per the Sashco technical data sheet below. Two coats are required.

All walkable surfaces, including stairs and landings and cedar shakes on the roof and handrail walls shall be coated with Transformation Siding and Trim Stain, Color Woodtone Cedar. Contractor shall prepare product and apply per the Sashco technical data sheet below. Two coats are required.

Caulking

Contractor to remove caulk from the tops of all metal collars and re-caulk using OSI Quad max Color"236" Brown.

Photos of the existing Tree Tower- Floor of the top platform is 48' above grade



Looking Northwest



Looking North



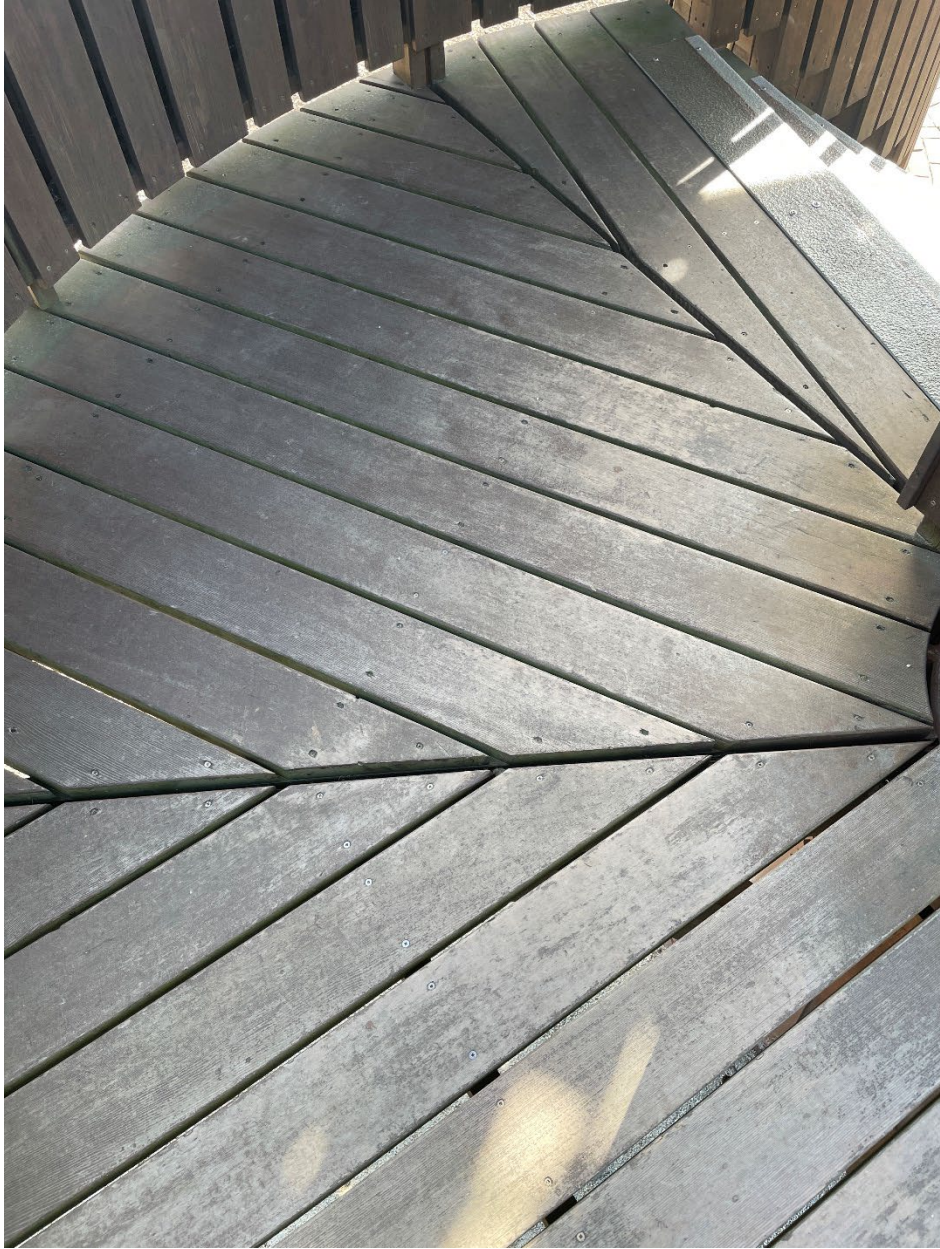
Looking Northeast



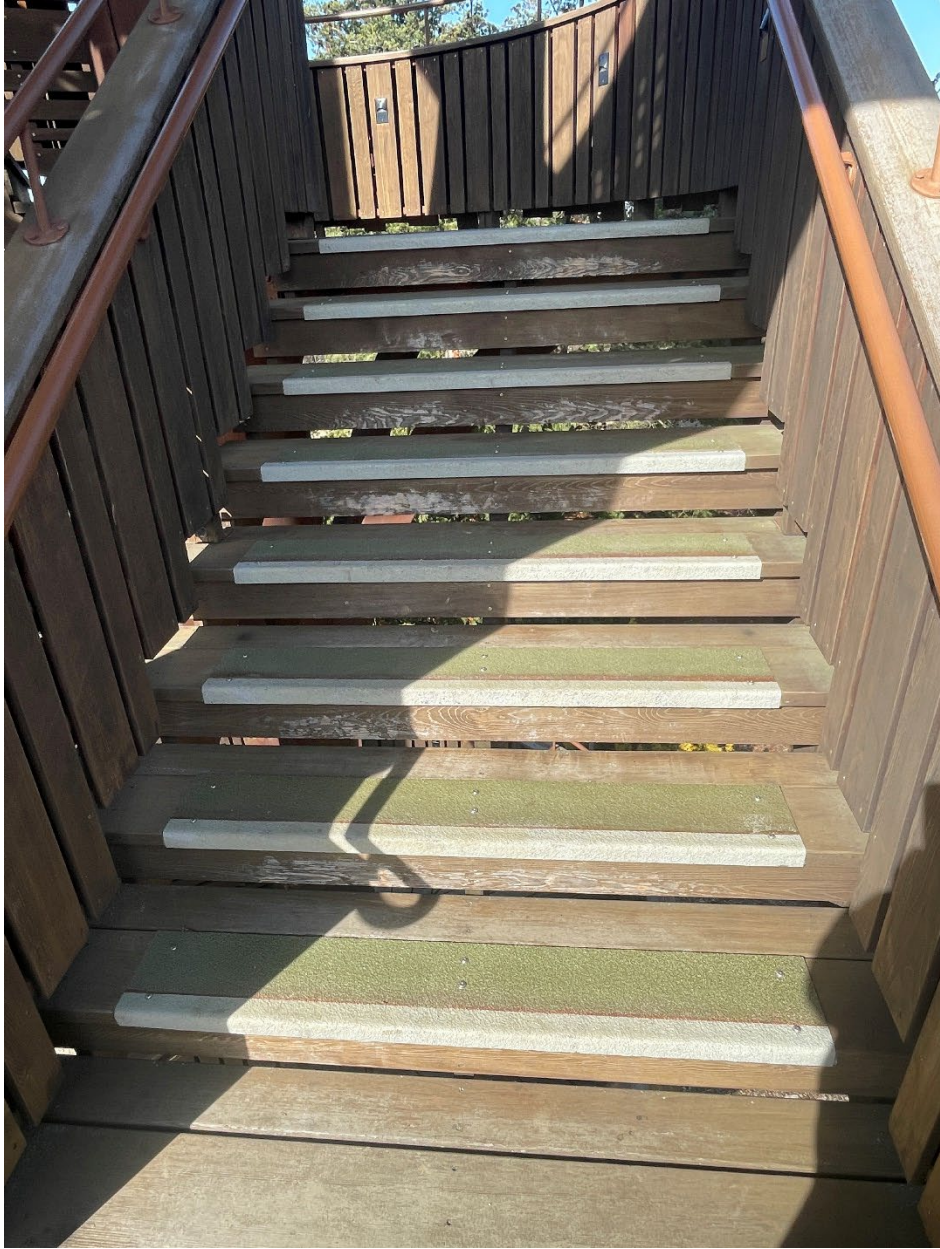
Looking Southeast



Looking Up



Typical Landing



Typical Stairs



Underside of the Roof

WARNING!

This product contains chemicals known to the state of California to cause cancer and birth defects or other reproductive harm.

WARNING! COMBUSTIBLE LIQUID & VAPOR.

Contains Petroleum Distillates. Vapor harmful. Keep away from sparks, heat, flames and sources of ignition. Do not smoke while using product. For exterior use only. Not for interior use. May be harmful if inhaled. May affect the brain or nervous system causing dizziness, headache or nausea. Avoid breathing vapors and spray mist. A dust mask does not provide protection against vapors. If properly used, a respirator (NIOSH-approved for organic vapor with P series particulate pre-filter) may offer additional protection; obtain professional advice before using. Avoid contact with eyes, skin, and clothing. Wash thoroughly after handling.

DO NOT TAKE INTERNALLY. If you experience eye watering, headaches or dizziness, leave area to obtain fresh air. Close container after each use.

First Aid

If you experience difficulty breathing, leave the area to obtain fresh air. If continued difficulty is experienced, get medical assistance immediately.

In case of eye contact, flush immediately with plenty of water for at least 15 minutes and get medical attention.

In case of skin contact, wash thoroughly with soap and water. Remove contaminated clothing, and wash clothing right away. Call doctor if skin irritation persists.

If swallowed, get medical attention immediately. Do not induce vomiting. Refer to the MSDS for this product as needed.

Keep Out of Reach of Children!

Notice

Reports have indicated that repeated and prolonged occupational overexposure to solvents can lead to permanent brain and nervous system damage. Intentional misuse by deliberately concentrating and inhaling the vapors from this product may be harmful or fatal.

WARNING!

If you scrape, sand, or remove old paint, you may release lead dust. LEAD IS TOXIC. EXPOSURE TO LEAD DUST CAN CAUSE SERIOUS ILLNESS, SUCH AS BRAIN DAMAGE, ESPECIALLY IN CHILDREN. PREGNANT WOMEN SHOULD ALSO AVOID EXPOSURE. Wear a NIOSH-approved respirator to control lead exposure. Clean up carefully with a HEPA vacuum and a wet mop. Before you start, find out how to protect yourself and your family by contacting the National Lead Information Hotline at 1-800-424-LEAD or log on to www.epa.gov/lead.

WARRANTY

Sashco warrants this product will substantially meet published specifications on the date of sale. If it fails to do so, return unused portion with original sales receipt for replacement or refund, at Sashco's sole option. This is purchaser's sole and exclusive remedy.

This product is sold "AS IS." To the extent permitted by law, there are no warranties which extend beyond the description on the face hereof and Sashco will not be liable for direct, indirect, special, incidental or consequential damages.

This Limited Warranty gives you specific legal rights. You may have other rights which vary from jurisdiction to jurisdiction. Some jurisdictions do not allow exclusion of implied warranties in consumer or other sales, limitations on the duration of implied warranties, or exclusion or limitation of incidental or consequential damages. The limitations or exclusions contained above may not apply to you depending upon your specific circumstances.



Typical Properties

(Not to be considered specifications)

Colors:

Natural	Brown Tone Light
Gold Tone Light	Brown Tone Medium
Gold Tone Medium	Brown Tone Dark
Gold Tone Dark	Redwood
Red Tone Light	
Red Tone Medium	
Red Tone Dark	

Packaging: 1 gallon and 5 gallon pails

Usage: Exterior only

Coverage rate:

1st coat: 150-250 sq. ft. per gallon
2nd and Maintenance coats: 300-500 sq. ft. per gallon
(As with all stains, coverage will vary depending upon roughness and porosity of the wood.)

VOCs: < 250g/L

Application Range:

40°F (4°C) and rising to 90°F (32°C) and falling. In severe conditions (under 40°F (4°C) and/or 70%+ humidity), full rain resistance may take longer. Protect surfaces with plastic sheeting if rainfall or snowfall is expected within 24 hours after application.

Compatibility:

Transformation Log & Timber is recommended for use with all Sashco chinking and caulking products. Please contact Sashco for details on other specific compatibility questions.

Dry Time:

Allow the first coat to thoroughly dry for 24 hours (possibly longer in cold and/or humid weather). Once thoroughly dry, follow with a lighter second coat. If desired, apply a third coat for a higher gloss. (The first coat will soak in and appear somewhat flat. The second coat should only be applied once the first coat is thoroughly dry in order to ensure proper film formation and UV protection from the stain, as well as give it a light gloss.)

Viscosity: 50-150 centipose

Density: 8.0-8.5 lbs./gal.

Solids: 60-65% by weight

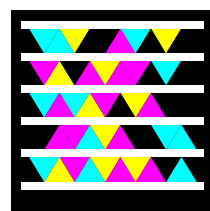
Odor: Solvent, mothballs

Freeze-Thaw: Passes 5 freeze-thaw cycles

The data reported here are believed to be reliable. No warranty is made or implied concerning the accuracy of or the results obtained from their use.

Watch Helpful How-To Videos • Chat Live • Search FAQs

www.sashco.com



Speak with Stain Experts
Mon-Fri, 6 a.m. – 5 p.m. MST
1-800-767-5656

TRN 002 3-12



Transformation Stain

Restore the Wood Nature Destroyed

Log & Timber

- Stunning Oil Finish
- Shows the Wood Grain
- Perfect for New Construction & Restoration Projects
- Oil-Based
- Gloss Finish

"A Better Way to Stain"

It's about Transformation: old and weathered logs brought to life again, or timbers refreshed with color when they were once only gray.

These are the results we want for our dream home, but sometimes those results seem like a distant fantasy. We've seen other log and timber homes scorched by the sun and are afraid of the "big project" nature and the hefty price tag of maintaining our own. Contrary to common wisdom, having a great quality stain is only half the battle. The other half is what is neglected the most: routine maintenance. Over time, routine maintenance is truly the key to easier and less expensive staining.

When done every 3-5 years, we find that routine maintenance saves a lot of time and money by eliminating much of the prep work before staining. Simply do a light power wash, allow the wood to dry, and apply a maintenance coat. No sanding or stain removal necessary. Your contractor will be happy you called him sooner rather than later, and your pocketbook will be, too. It's that simple.

Use a quality stain like Transformation Stain® Log & Timber and you'll transform the look of your wood. Practice routine maintenance, and you'll discover a better way to stain.

For Sashco's complete guide on a better way to stain, keep reading. You'll find step-by-step instructions on the following key topics:

Sampling

To get the look you want, sample the stain on your wood.

Prep

Proper prep starts you down the right path.

Application

Proper application of a quality stain ensures long-term performance.

Routine Maintenance

Reduce long-term costs, time and effort.

Sampling

Proper sampling is where it starts. It is critical because the same stain can look very different on various species of wood. Different prep and application methods will also affect the final result. Therefore, sampling on your wood is the only way to make sure you get the color you want the first time.

It's easy: on a small, inconspicuous test area (we recommend a minimum 2 sq. ft. space), simply do each step the exact same way you will on all of your logs and timbers.

- Prep the wood.
- Apply the stain.
- Let the stain dry (both between coats and after all coats are applied).
- If working with a contractor, don't allow the contractor to stain until you have thoroughly discussed and demonstrated the look you want. Show him/her the sample.
- Don't stain all of your logs and timbers before you verify that you're achieving the look you want. It is best if you can be on-site when staining starts.



INFO SHEET

www.sashco.com • 800-767-5656

Prep

Proper substrate preparation and application mean greater longevity, better color, and better long-term performance.

- **Make sure it sticks:** If you are changing from one stain product to another, contact us first. Transformation Log & Timber will adhere to almost any surface that is properly prepped. Be aware that any product already on the wood that contains waxes, non-drying oils, silicones, or anything that forms thick layers on the wood, can interfere with the adhesion and penetration of Transformation Log & Timber, or any stain, and must first be removed.

- 1 **Cleanliness is a virtue:** Starting with an absolutely clean surface means better penetration and adhesion of the stain, which means better longevity and a more beautiful finish.

- Media blast, vigorously power wash or sand wood surfaces using an Osborn® brush or 60–80 grit sand paper to remove failing stains and loose, unsound wood fibers, along with surface contaminants.
- If mildew is present, apply Sashco's CPR® in the brightener strength according to the directions, or apply fresh bleach in a 4 parts water to 1 part bleach solution. Allow it to sit no more than 20 minutes, and then thoroughly rinse.

- 2 **Fuzz be gone:** For the best appearance, remove felting (wood fuzz) with Osborn brushes, Sashco's Buffy Pad system or 60–80 grit sand paper once the wood is dry. Remove all sawdust with a broom, compressed air or a leaf blower.

- **Don't delay:** UV rays from the sun can damage cleaned wood surfaces in as little as 1 week; therefore, stain should be applied no more than 2 weeks after wood prep is completed.

- **Sunny with a chance of more sun:** Plan to stain when the forecast is predicting clear, rain-free weather that will extend 1-2 days after the stain has been applied. If rain can't be avoided, be sure to protect the stain from direct rainfall for 1-2 days after the stain is applied to prevent it from being washed off the surface.

- 3 **Preserve, please:** Apply Sashco's PeneTreat® for protection against wood rot and insects. Allow wood to dry at least 2-4 days. (Use a moisture meter to check it!)

Osborn® is a trademark of Osborn International.



Media Blast (preferred method)

Power Wash

- 1 **Remove old stain or unsound wood fibers**



Osborn® Brush

- 2 **Remove wood fuzz (splintering or felting)**

- 3 **Apply PeneTreat® for protection**



Routine Maintenance

Everyone knows that a \$30 oil change twice a year beats a \$2,000 mechanic's bill. Routine maintenance on your logs or timbers could be the difference between \$2,000 every 3-5 years or \$20,000 to completely redo the job. It's truly the key to "a better way to stain."

1. Cleanliness is still a virtue:

- Lightly power wash your logs or timber to remove grease spots, pollen, bird droppings and other surface contaminants.
- If mildew is present, apply Sashco's CPR® in the cleaner strength according to the directions, or apply fresh bleach in a 4 parts water to 1 part bleach solution. Allow it to sit no more than 10 minutes, and then thoroughly rinse. Allow the surface to thoroughly dry. (This generally takes 2-4 days in ideal weather. To know for sure, use a moisture meter to check!)

2. One more coat, please:

- Spray on one maintenance coat of Transformation Stain® Log & Timber. If only a brush is used, be sure to drench-apply the stain to ensure adequate coverage. Don't skimp.
- Vigorously brush the stain, pushing it into the wood, catching any drips. This promotes the best adhesion and penetration, and leaves an even, consistent coat of stain.

Application

Proper application of the stain, combined with the prep you've already done, will complete the transformation of your logs and timbers.

1. **Stay dry:** Use a moisture meter to make sure wood is at or below 19% moisture content level before applying stain. Damp wood can prevent the stain from penetrating properly and can eventually lead to peeling.

2. **Say no to mildew:** Help keep surface mold and mildew at bay by adding more mildewcides to the stain. We recommend Stay Clean I/E™.

3. **Mix it up:** Thoroughly mix the stain. The preferred method is to use a drill-driven, squirrel-cage type mixer. No matter what method is used to mix the stain, you can ensure the most consistent color by:

- Scraping all pigment off the bottom of the pail and thoroughly mixing it in.
- Interblending pails with different lot numbers.
- Stirring the stain every 10-15 minutes throughout application to keep the pigments evenly distributed through the stain.

4. **Warm feelings:** Apply Transformation Log & Timber to wood surfaces that are no colder than 40°F (4°C) and no hotter than 90°F (32°C). Extreme temperatures will prevent proper penetration and drying of the stain. Plan your work so that surface temperatures fall within this range. Do not apply to surfaces in direct intense sunlight and work in sections to avoid lap marks.

5. Spray it again, please:

- a. Spray on one heavy coat of Transformation Log & Timber stain. If only a brush is used, be sure to drench-apply the stain. Don't skimp.
- b. Vigorously brush the stain, pushing it into the wood and all cracks and checks, catching any drips. This promotes the best adhesion and penetration, and leaves an even, consistent coat of stain.

- Wait until the first coat is dry (24 hrs.), then apply a light second coat of stain, spraying and back brushing as with the first coat.

6. **Bask in it:** Enjoy your beautiful log or timber home.

Stay Clean I/E is a trademark of Walla Walla Environmental.

Clean-up

Clean brushes and equipment with mineral spirits. Hands may be cleaned with citrus-based hand cleaners, and then washed with soap and water. Follow local, state and federal guidelines for disposing of empty cans or any unused product. For rag disposal, see DANGER! statement.

Storage

Do not store in direct sunlight or hot conditions. Tightly reseal opened containers and store at temperatures between 50°F and 90°F (10°C - 32°C). If skinned over, remove the skin before thoroughly stirring the product.

- 1 **Make sure the wood is dry**



- 2 **Optional: add mildewcide**



- 3 **Mix the stain**



- 4 **Surface temperature 40° - 90°F**



- 5a **Spray on one heavy coat of stain**



- 5b **Back-brush stain into the wood**

DANGER!

If improperly stored, rags, drop cloths, steel wool or other items wet with Transformation Log & Timber or solvents may spontaneously catch on fire. To avoid fire, place such items in a water-filled metal container, and in no case should such items be stored in or near buildings, vehicles or other valuable structures which could catch fire if spontaneous combustion should occur.

First Aid

Refer to the MSDS (Material Safety Data Sheet) as needed.
EYES: Immediately flush with large quantities of water for at least 15 minutes. If irritation persists, see a medical doctor.

SKIN: Wash with soap and water and rinse thoroughly. Wash contaminated clothing before use.

INHALATION: Remove to fresh air.

INGESTION: If large quantities are swallowed,

DO NOT INDUCE VOMITING - seek medical help.

WARNING!

May be harmful if inhaled or swallowed. Avoid contact with eyes and skin.

Keep out of reach of children!

If you scrape, sand, or remove old paint, you may release lead dust. **LEAD IS TOXIC. EXPOSURE TO LEAD DUST CAN CAUSE SERIOUS ILLNESS, SUCH AS BRAIN DAMAGE, ESPECIALLY IN CHILDREN. PREGNANT WOMEN SHOULD ALSO AVOID EXPOSURE.** Wear a NIOSH-approved respirator to control lead exposure. Clean up carefully with a HEPA vacuum and a wet mop. Before you start, find out how to protect yourself and your family by contacting the National Lead Information Hotline at 1-800-424-LEAD or log on to www.epa.gov/lead.

WARRANTY

Sashco warrants this product will substantially meet published specifications on the date of sale. If it fails to do so, return unused portion with original sales receipt for replacement or refund, at Sashco's sole option. This is purchaser's sole and exclusive remedy. Purchaser must determine suitability of product for purchaser's specific needs and assumes all risk associated with its use. **This product is sold "AS IS."** To the extent permitted by law, **there are no warranties which extend beyond the description on the face hereof and Sashco will not be liable for direct, indirect, special, incidental or consequential damages.**

This Limited Warranty gives you specific legal rights. You may have other rights which vary from jurisdiction to jurisdiction. For a detailed description of the warranty and exclusions, please visit our website at www.sashco.com

Watch Helpful How-To Videos • Chat Live • Search FAQs
www.sashco.com



Speak with Stain Experts
Mon-Fri, 6 a.m. – 5 p.m. MST
800-767-5656

Typical Properties

(Not to be considered specifications)

Colors:

Natural
Cedar
Gold Tone Medium
Red Tone Medium
Brown Tone Medium
Redwood
Applewood
Honey Timber
Natural Cedar
Woodtone Cedar
Pecan

Packaging: 1 gallon and 5 gallon pails

Usage: Exterior/Interior

Coverage rate:

1st coat: 150-250 sq. ft. per gallon
2nd and Maintenance coats: 250-350 sq. ft. per gallon
(As with all stains, coverage will vary depending upon roughness and porosity of the wood.)

VOCs: < 250g/L

Application Range:

40°F (4°C) and rising to 90°F (32°C) and falling. In severe conditions (under 40°F (4°C) and/or 70%+ humidity), full rain resistance may take longer. Cover surfaces with plastic if rainfall or snowfall is expected within 24 hours after application.

Compatibility:

Transformation Siding & Trim is recommended for use with all Sashco caulking & chinking products. Please contact Sashco for details on other specific compatibility questions.

Dry Time:

Dries to the touch in 30 minutes or less in ideal weather.

Viscosity: 50-150 centipoise

pH: 8.5-9.0

Density: 8.3-8.8 lbs./gal.

Solids: 18-22% by weight

Odor: Mild, sweet

Freeze-Thaw: Passes 5 freeze-thaw cycles

The data reported here are believed to be reliable. No warranty is made or implied concerning the accuracy of or the results obtained from their use.



10300 E. 107th Place • Brighton, CO 80601
800-767-5656 • www.sashco.com

TRW 002 3-15



Transformation[®] Stain

Restore the Wood Nature Destroyed

Siding & Trim

- No Peel Formula
- Shows the Wood Grain
- Water Clean-up
- Matte Finish
- Use also on Decks, Fences & Interiors

"A Better Way to Stain"

It's about Transformation: old and weathered wood siding brought to life again, or trim stained with color to create the perfect accent.

These are the results stain was made for, yet rarely do we observe this in the real world. We see our neighbor's stain peeling or are reluctant to repair our own siding due to its "big project" nature and the hefty price tag. Contrary to common wisdom, having a great quality stain is only half the battle. The other half is what is neglected the most: routine maintenance. Over time, routine maintenance is truly the key to easy and inexpensive staining.

When applied correctly and maintained every 3-4 years, you can be assured that Transformation Stain[®] Siding & Trim won't peel. This eliminates the time and expense of sanding the surface before applying a maintenance coat. Simply do a light power wash, allow the wood to dry and apply another coat. It's that easy, and you'll find that your "big project" wasn't so big after all.

Use a quality stain like Transformation Siding & Trim and you'll transform the look of your wood. Practice routine maintenance and you'll discover a better way to stain.

For Sashco's complete guide on "a better way to stain," keep reading. You'll find step-by-step instructions on the following key topics:

Sampling

To get the look you want, sample the stain on your wood.

Prep

Proper prep starts you down the right path.

Application

Proper application of a quality stain ensures long-term performance.

Routine Maintenance

Reduce long-term costs, time and effort.

Sampling

Proper sampling is where it starts. It is critical because the same stain can look very different on various species of wood. Different prep and application methods will also affect the final result. Therefore, sampling on your wood is the only way to make sure you get the color you want the first time.

It's easy: on a small, inconspicuous test area (we recommend a minimum 2 sq. ft. space), simply do each step the exact same way you will on all of your siding or trim.

- Prep the wood.
- Apply the stain.
- Let the stain dry (both between coats and after all coats are applied).
- If working with a contractor, don't allow the contractor to stain until you have thoroughly discussed and demonstrated the look you want. Show him/her the sample.
- Don't stain all of your siding or trim before you verify that you're achieving the look you want. It is best if you can be on-site during the staining process.



*When applied correctly & maintained (3-4 years on siding & trim).

INFO SHEET

www.sashco.com • 800-767-5656

Prep

Proper substrate preparation and application mean greater longevity, a better color, and better long-term performance.

- **Make sure it sticks:** If you are changing from one stain product to another, contact us first. Transformation Siding & Trim will adhere to almost any surface that is properly prepped. Be aware that any product already on the wood that contains waxes, non-drying oils, silicones, or anything that forms thick layers on the wood can interfere with the adhesion and penetration of Transformation, or any stain, and must first be removed.

1 Cleanliness is a virtue: Starting with an absolutely clean surface means better penetration and adhesion of the stain, which means better longevity and a more beautiful finish. Power wash or sand wood surfaces using an Osborn® brush or 60—80 grit sand paper to remove all previous stains and loose, unsound gray or yellow wood fibers, along with surface contaminants like pollen, bird droppings, dust, etc. If mildew is present, apply Sashco's CPR® in the brightener strength according to the directions or apply fresh bleach in a 4 parts water to 1 part bleach solution. Allow it to sit no more than 20 minutes, then thoroughly rinse. If necessary, use a chemical stripper. (Follow label instructions carefully and ensure wood is back to neutral pH, checking with pH strips.)

2 Fuzz be gone: If you power washed, remove felting (wood fuzz) with Osborn® brushes, Sashco's Buffy Pad system or 60—80 grit sand paper once the wood is dry. Remove all sawdust with a broom, compressed air or a leaf blower.

- **Don't delay:** UV rays from the sun can damage cleaned wood surfaces in as little as 1 week; therefore, stain should be applied no more than 2 weeks after wood prep is completed.

- **Sunny with a chance of more sun:** Plan to stain when the forecast is predicting clear, rain-free weather that will extend 1-2 days after the stain has been applied so the stain can dry properly. If rain can't be avoided, be sure to protect the stain from direct rainfall for 1-2 days after the stain is applied to prevent it from being washed off the surface.

3 Preserve, please: If rot could be a problem in your area, apply Sashco's PeneTreat® for protection. Allow wood to dry 1-3 days. (Use that moisture meter to check it!)

4 Stay dry: Use a moisture meter to make sure wood is at or below 19% moisture content level before applying stain. Damp wood can prevent the stain from penetrating properly and can eventually lead to peeling.

Osborn® is a trademark of Osborn International.



Orbital Sander



Power Wash

1 Remove old stain or unsound wood fibers



Buffy Pad System



Osborn® Brush

2 Remove wood fuzz (splintering or felting)

3 Apply PeneTreat® for protection



4 Make sure the wood is dry



Application

Proper application of the stain, combined with the prep you've already done, will complete the transformation of your siding and trim.

1. **Say no to mildew:** Help keep surface mold and mildew at bay by adding extra mildewcides to the stain. We recommend Stay Clean I/E.

2. **Mix it up:** Thoroughly mix the stain. The preferred method is to use a drill-driven, squirrel-cage type mixer. No matter what method is used to mix the stain, you can ensure the most consistent color by:

- Scraping all pigment off the bottom of the pail and thoroughly mixing it in.
- Interblending pails with different lot numbers.
- Stirring the stain every 10-15 minutes throughout application to keep the pigments evenly distributed through the stain.

3. **Warm feelings:** Apply Transformation to wood surfaces that are no colder than 40°F (4°C) and no hotter than 90°F (32°C). Extreme temperatures will prevent proper penetration and drying of the stain. Plan your work so that surface temperatures fall within this range. Do not apply to surfaces in direct intense sunlight and work in sections to avoid lap marks.

4. Spray it again, please:

- a. Spray on one heavy coat of Transformation Siding & Trim. If only a brush is used, be sure to drench-apply the stain to ensure adequate coverage. Don't skimp.

- b. Vigorously back brush the stain, pushing it into the wood, catching any drips. This promotes the best adhesion and penetration, and leaves an even, consistent coat of stain.

- Wait until the first coat is dry (approx. 12-24 hours), then apply a second coat of stain, spraying and back brushing as with the first coat.

5. **Bask in it:** Enjoy your freshly stained siding & trim.

1 Optional: add mildewcide



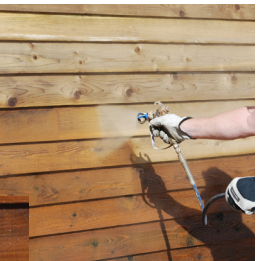
2 Mix the stain



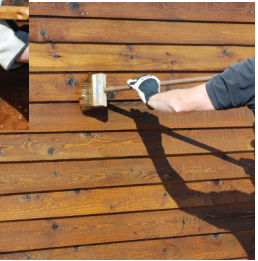
3 Surface temperature 40° - 90°F



4a Apply stain by stain pad, spraying, or rolling



4b Back-brush stain into the wood



Routine Maintenance

Everyone knows that a \$30 oil change twice a year beats a \$2,000 mechanic's bill. Routine maintenance on your siding and trim could be the difference between \$300 every 3-4 years or \$5,000 to completely redo the job. It's truly the key to "a better way to stain."

1. Cleanliness is still a virtue: Lightly power wash your wood to remove pollen, bird droppings, dirt and other surface contaminants. If mildew is present, apply Sashco's CPR® in the brightener strength according to the directions or apply fresh bleach in a 4 parts water to 1 part bleach solution. Allow it to sit no more than 20 minutes, then thoroughly rinse. Allow the

surface to thoroughly dry. (This generally takes 1-2 days in ideal weather. To know for sure, use a moisture meter to check!)

2. Spray it again, please:

- Spray on one maintenance coat of Transformation Stain® Siding & Trim. If only a brush is used, be sure to drench-apply the stain to ensure adequate coverage. Don't skimp.
- Vigorously back brush the stain, pushing it into the wood, catching any drips. This promotes the best adhesion and penetration, and leaves an even, consistent coat of stain.

Clean-up

While still wet, clean tools and equipment with water. Once dry, mineral spirits will be required on tools and equipment. Use citrus-based hand cleaners for any product that dries on skin.

Storage

Tightly reseal opened containers and store at temperatures between 50°F and 90°F (10°C - 32°C)