

Huffman Master Plan Key

Final Concept

Park Wide

- Tell the story of the park
 - History
 - Wright Brothers
 - Huffman Family
 - Huffman Dam
 - Geology
 - Trilobite
- Continue Invasive Species removal
 - Continue to work with MVMBA volunteers to continue invasive work in mountain bike trail area
 - Look for ways to control lesser celandine primarily east of the river
- Continue to restore and enhance various habitats throughout the park with native plantings
 - Develop a habitat plan for the MoMBA portion of the park
- Open views of the lake especially along Lower Valley Pike and from the Redtail Use Area

Trails

- Utilize and enhance the outer loop trail at MoMBA to allow for a variety of park users including young mountain bikers to ride with non-mountain biking parents. Novice skill features should be developed along the loop to allow for skill development and play.
- Develop a gravel hardened or natural surface route for mountain bikes between the Mad River Trail at the Huffman Dam and MoMBA. Provide a loop option on the east side of the river utilizing primarily existing monitoring well roads and connect to Main Park via a new bridge. When this section of trail is closed for flooding, riders can use the paved trail over the dam and connect to Lower Valley Pike to connect back to the bike trail connector at the Main Park entrance.
- Enhance hiking trails in the Main Park area including a new curvilinear trail through the prairie area below the dam.
- Utilize the existing level benches on the dam to provide exercise loops to runners and walkers. Install steps to connect between the top, middle and lowers benches.
- Ensure park users are directed to Huffman Prairie along the paved pathway between Huffman MetroPark and Huffman Prairie. Work with Wright Patterson Air Force Base to notify park users when the access gate is closed.

Use Areas (Yellow numbered circles on the plan)

1- MoMBA Use Area

- Continue to improve the user experience including adding options for non-riders including picnic, nature play and access to the multi-user loop for walking and jogging
- Power of 10+ Activities:
 - Mountain Bike
 - Picnic
 - Camping
 - Restroom and trail head
 - Learn and practice new skills
 - Rent a mountain bike
 - Take a family trip to try mountain biking
 - Attend a mountain bike race
 - Take a jog while the kids ride along the multi-use loop
 - Try the tot track
 - Nature play
 - Learn new skills on a pump track

2- The Advanced Skills Use Area

- This area is the home to a historic cemetery, an old general store and a mobile home park
- Stabilize and protect the historic cemetery
- Repurpose the old foundations and built features to provide a unique mountain bike advanced skills area
- Power of 10+ Activities:
 - Visit the historic cemetery
 - Develop and practice advanced mountain bike skills on a variety of features
 - Take an advanced mountain bike skills development class
 - Watch advanced users hone their skills on the built features
 - Learn about the history of this part of town
 - Work with other volunteers to build and maintain features in this part of the park
 - Ride the high thrills features as the terminus to a long ride out the Mad River Corridor
 - Sit and watch the aircraft fly over from the Air Force Base
 - Support conservation efforts by removing invasive species and planting native species

3- Main Park Use Area

- Reduce the overall parking area by about 50% to reduce maintenance efforts and long-term capital costs
- Enhance the use area to ensure picnic style activities continue and ensure lake access is maintained and improved
- Install a new restroom facility to support the use area
- Power of 10+ Activities:
 - Learn about the Huffman Family and their impact on the region
 - Learn about the transportation history in the area including the train and traction lines
 - Learn about the Mormon Camp
 - Enjoy the view of the river and lake

- Take a bird watching walk
- Have a picnic
- Launch a kayak on the lake
- Walk across the Mad River on the suspension bridge
- Grassy play including Frisbee and ball throwing
- Take a lunch break

4- Redtail Use Area

- Develop an accessible connection to the end of the multi-use trail on top of the dam
- Maintain the view of the lake by removing invasive species
- Expand bat habitat and bat support amenities along with interpretation improvements
- Power of 10+ Activities:
 - Start a bike ride
 - Take a run or walk across the dam
 - Enjoy a stroll around the lake
 - Picnic
 - Have a party or reunion in the shelter
 - Restroom and trail head
 - Take a hike
 - Grassy play including Frisbee and ball throwing
 - Introduce built in games such as corn hole and large games
 - Learn about bats

5-New Kauffman Road Primary Use Area

- Develop a new park entrance which will become the primary use area and front door for the MetroPark
- Create a low impact green parking lot for approximately 50 cars
- Create a new trail head for activities offered in the MetroPark, along with directing visitors to Huffman Prairie, the Wright Brothers Memorial National Park Site and the regional bike trail network
- Develop a new restroom, trail head, trail loop, picnic shelters and associated primary use amenities to promote increased use of the MetroPark
- Screen the operations area from the park use area
- Power of 10+ Activities:
 - Take a trip to Huffman Prairie
 - Take a trip to the Wright Brothers Memorial
 - Take a lunch break from Wright State University of Wright Patterson Air Force Base
 - Explore the history of MCD on the Huffman Dam
 - Picnic
 - Have a party or reunion in the shelter
 - Restroom and trail head
 - Take a hike
 - Learn about fossils and the State Fossil the Trilobite

- Access the bike trail
- Grassy play including Frisbee and ball throwing
- Introduce built in games such as corn hole and large games

Entry Areas (Red numbered circles on the plan)

E1- Route 4/ Lower Valley Pike

- Work with ODOT to open view and add signage to significantly reduce vehicles from overshooting the exit
- Provide signage on SR 4 to identify the park entrance
- Ensure a clear vehicular direction to Lower Valley Pike and not across the dam
- Create a safe multi-user connection between the top of the dam and the Redtail Shelter area which provides protection from vehicles exiting Route 4

E2- Pedestrian Gate to Huffman Prairie

- Work with Wright Patterson Airforce Base to notify park users when the gate needs to be closed for security purposes
- Create wayfinding opportunities to direct park users to Huffman Prairie

E3- Proposed Kauffman Road Entrance

- Work with ODOT and other local municipalities to create a new signalized entry into Huffman MetroPark to allow for the large populations located south of the park to have direct access to the park and build awareness of the park's presence
- Develop park identity signage to help build awareness of the park to vehicles using Kauffman Road and SR 444

Plan Notes (Green lettered squares on the plan)

A. MoMBA Skills area and overflow parking

- Grade and stabilize area as a grassy area to be used for basic mountain bike skill classes and for use as overflow parking for larger events
- Create additional skill building features along the perimeter of the area such as a terra-scaped hill

B. Tot Track

- Develop a more suitable surface for the tot track to reduce maintenance efforts and provide a higher quality experience for users
- Add two small picnic shelters to the area
- Add bike playground elements inside the loop
- Add additional trees to provide shade for the area

C. Develop a new MoMBA Support facility

- A new structure will be constructed to replace program elements in the existing barn including bike repair, storage and rentals
- Develop a small concession stand to support activities
- Develop office or staff support space

- Develop a covered shelter area to be used for meetings, events and gatherings. The shelter should include roll up doors to allow for at least three season use
- Signage and wayfinding should be included to direct park visitors to the facility for classes, meetings and rentals
- Develop the facility in conjunction with MVMBA to provide mutually beneficial spaces

D. Pump Track and Bouldering Area

- Develop a new paved or pre-manufactured pump track to be used as a free-standing element as well as support for new skills classes and progression from the tot track area
- Integrate a bouldering area for a wide range of ages
- Ensure the tot track and pump track are developed for easily defensible use by parents of younger children to be able to allow for some free-range play while using the shelters in the tot track area
- Plant additional trees to provide shade for the area

E. Gravel Vehicular Access Drive

- Provide controlled vehicular access to support special events and to provide parking for overnight camping

F. Camping Area

- Develop a central gathering area including a fire pit, firewood box and picnic tables to support 5-6 individual primitive campsites surrounding the central gathering area (Similar to back country sites)
- Camping should be developed to allow for individual sites to be reserved or to allow for a large group to utilize the facility
- Camping use should be limited to times that the trails are open and FRMP should retain the right to cancel camping activities when trail conditions require the area to be closed

G. Spectator Connector

- Develop a sustainable trail connector to allow non-mountain bikers to gain access to the Five Points Area to interact with users and watch mountain bike activities including both day to day activities and special events

H. Develop a Loop Multi-User Trail

- Utilize most of the vehicular service drive to allow a variety of users to use the facility to support mountain bike activities. The trail can be utilized by users not wanting to mountain bike but allow younger riders to develop skills while other members of the family are riding the trails
- Develop skills areas along the loop to supplement those found of the Hilltop Flow Trail

I. Enhance the Hilltop Flow Trail

- Continue to expand skills areas along the trail where appropriate
- Work with Conservation Staff to plant trees along the trail to help to reduce weather impacts on the natural surface trail and to provide shade to users
- Work with Conservation Staff to enhance the prairie areas in this area and provide interpretive opportunities to educate riders about the natural habitat

J. Improve Main Trail System

- Continue to improve and maintain the existing trail system including the addition of more advanced skill element options in the existing system
- Continue to work the remove invasive species and plant native species to improve the habitat in the trails area. Use plantings strategically to screen areas between trails to enhance both the ecosystem and the rider experience

K. Enhance and Expand the Creekside Trail

- Once the barn and other structures are removed, expand the trail system in this area to improve the ride of this section of the trail

L. Off Road Trail Connector

- Work within the existing right of way in this area to develop a mountain bike friendly side path to allow a safer connection between the Cemetery Use Area and MoMBA
- Explore the opportunity to allow the side trail to leave the right of way with the current land owners using easements or use agreements to create a better experience for users

M. Historic Cemetery

- Protect and interpret the existing cemetery

N. Advanced Mountain Bike Skills Area

- Develop an advanced rider's area using existing and newly constructed elements including jumps, larger rollers and other technical features to provide another level of activity
- Utilize exclusion elements at the points of entry to the trail to help ensure that appropriately skilled riders only can access to the area

O. Multi-Use Connector Trail

- Develop a gravel hardened connector trail between the main park and the Cemetery Use Area

P. New Restroom

- Develop a new restroom facility which can handle frequent flooding of the park
- Restroom should be located on the higher part of the park above the parking area

Q. Mad River Pedestrian Bridge

- Develop an accessible cable supported bridge for trail users installed on the previous alignment of the rail line where the existing stone abutments are located

R. Trail Connections

- Create multi-user accessible connections from the paved trail on top of the dam to the Redtail Use Area
- Ensure protection from exiting vehicles from Route 4

S. Huffman Lake

- The lake cannot be dredged so it will eventually silt in overtime and become more of a wetland landscape. Fishing currently occurs in the lake but has fallen off as a result of the lake silting in
- Continue to provide access for small paddle craft, birding and wildlife tours and access for paddling takeout from the Mad River

T. East Park Trails

- Utilize and enhance the existing gravel access roads for the monitoring wells to provide multi-user access to this part of the park

- Strategically add and remove roadway sections to create meaningful loops and a more curvilinear layout while still providing access to the wells
- Explore opportunities for mountain bike skill features that can withstand frequent flooding
- Control access to this section of the park using a gate at the stream crossing to inform users when this section of the park is inaccessible due to flooding

U. New Paved Dam Top Trail

- Enhance the new paved trail on top of the dam with shaded exercise stations at several locations where the trail curves and creates wider areas
- Create an interpretive station on top of the spillway to educate users about the dam and the flood control system in the Miami Valley
- Take advantage of the views to downtown Dayton from the dam

V. Dam Side Exercise Trails

- Utilize the two benches on the side of the dam to create exercise loops for runners, athletic groups from the Base and Wright State University
- Install steps at each end of the dam to enhance the exercise experience

W. Lake Outlet

- Stabilize the outlet structures and provide a safe pedestrian crossing to the lake-river peninsula

X. New Prairie Trail

- Create a new natural surface trail to provide users additional access to the tree line and prairie area for hiking and bird watching activities

Y. Dam and River Overlook

- Create an overlook point to this scenic location to observe the creek, Mad River and the dam spillway
- Add additional gravel pathway to provide a completed loop trail section

Z. Operations Area

- Make improvements to the operations area as outlined in the repair and replacement plan
- Provide new access to the operations area from the new entry point at Kauffman Avenue
- Screen operations area from the proposed new entry and public use area

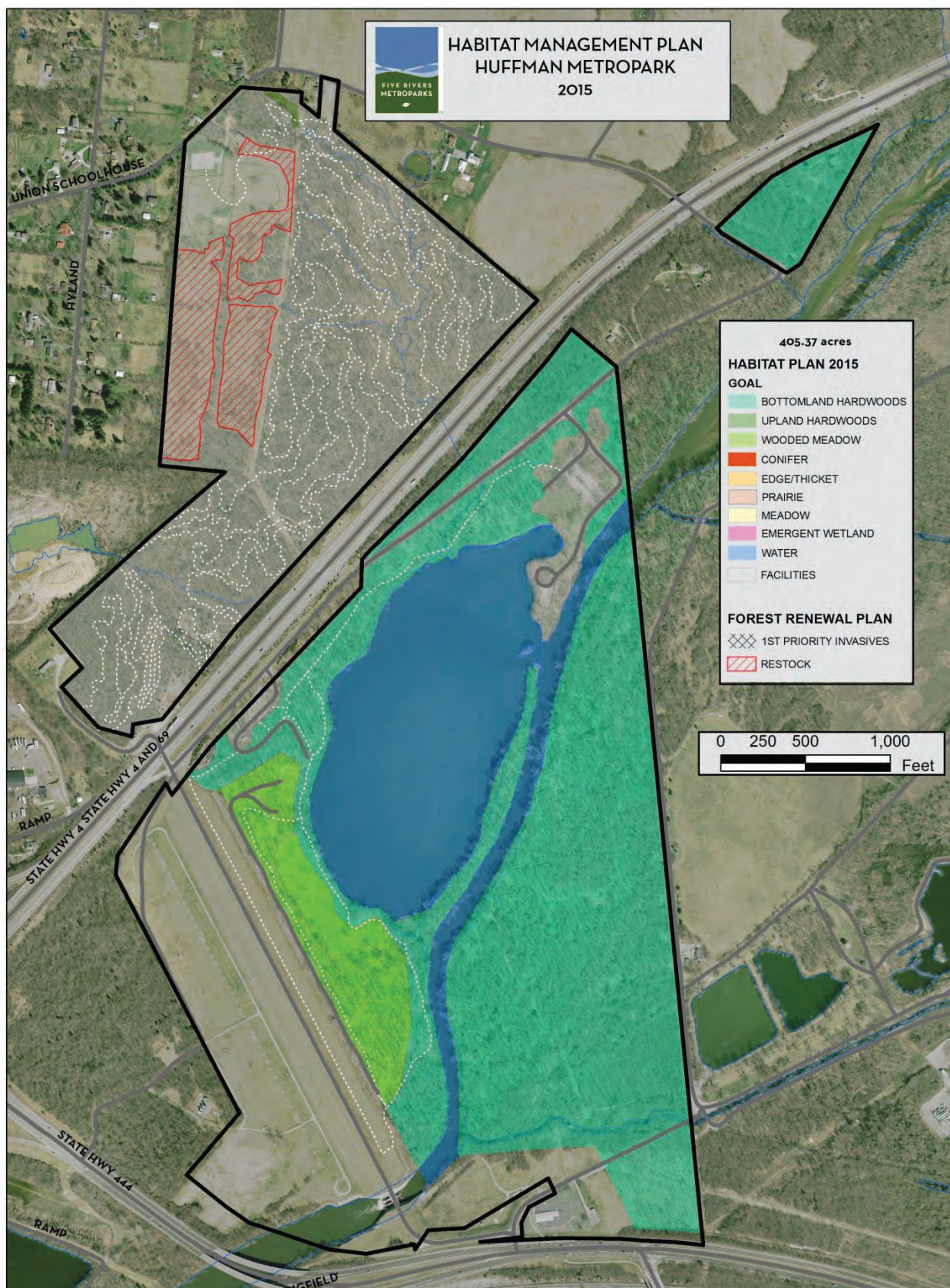
HUFFMAN METROPARK

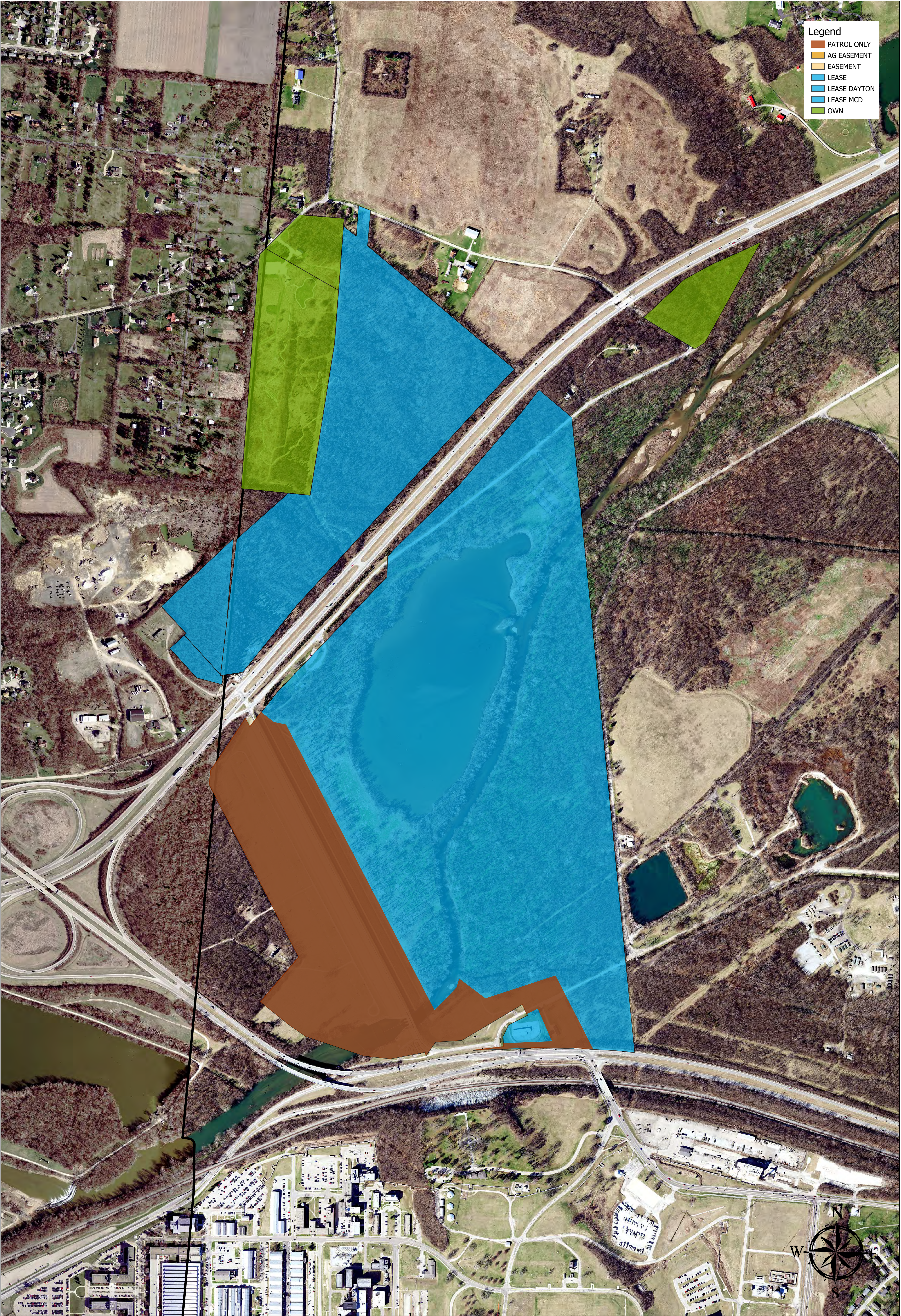
465.37 acres

Huffman MetroPark contains significant bottomland hardwood habitat, a designated wooded meadow, a shallow lake, and frontage on both sides of the Mad River. The forested land south and east of the Mad River is utilized by the City of Dayton Water Department to monitor groundwater quality and contamination levels. Here a small stream, Hebble Creek, flows from Wright-Patterson Air Force Base onto park land, and flows into the Mad River. The land north of SR 4 contains significant mature upland hardwood forest, successional forest, and meadows. This section of the park is designated as the Montgomery Mountain Bike Area (MOMBA), but is counted in the “developed” acreage category.

GOALS

1. To preserve the existing high quality mature woodlands. Control of honeysuckle and other invasive species in all habitats as designated.
2. To permit natural succession to occur in the designated areas to maximize forest size and minimize edge effect within large tracts. Reintroduction and planting of native mast species in designated areas to augment succession and ensure a diverse future forest.
3. To manage the existing lake for wildlife habitat and recreational fishing.
4. To maintain the existing wooded meadow north of Huffman Dam.
5. To design and maintain hiking trails to maximize the experience of the user and integrity of the managed habitats.





Huffman MetroPark

Date Exported: 11/27/2019 3:41 PM

PROPERTY	PARCEL_ID	FRMP_ID	Partial_Parcel	COUNTY	Current_Typology	Proposed_Typology	DATE	ACRES	Actual	LOCATION	TYPE	MANAGEMENT_TYPE	PRICE	GRANTS\$	FRMP\$	DOCUMENTS
MCD Lease Updated 2012	R72405013 0017	R72405013 0017		Montgomery	Nature Park	Nature Park	3/23/12	286.300		Huffman	LEASE	LEASE MCD	\$ -	\$ -	\$ -	HUFFMAN MP\HUMP03232012
MCD Lease Updated 2012	R72405013 0005	R72405013 0005		Montgomery	Nature Park	Nature Park	3/23/12	286.300	8.4100	Huffman	LEASE	LEASE MCD	\$ -	\$ -	\$ -	HUFFMAN MP\HUMP03232012
MCD Lease Updated 2012	A01000100100000200	A01000100100000200	Yes	Greene	Nature Park	Nature Park	3/23/12	286.300	277.8900	Huffman	LEASE	LEASE MCD	\$ -	\$ -	\$ -	HUFFMAN MP\HUMP03232012
MCD Lease Updated 2012			Yes	Greene	Nature Park	Nature Park	3/23/12	79.700		Huffman	PATROL	PATROL	\$ -	\$ -	\$ -	HUFFMAN MP\HUMP03232012
Sharts Est.	A01000100020010400	A01000100020010400		Greene	Nature Park	Nature Park	10/22/93	7.30	7.3340	Huffman	PURCHASE	OWN	\$ 15,000.00	\$ -	\$15,000.00	HUFFMAN MP\HUMP10271993
Waag	A01000100020003600	A01000100020003600		Greene	Nature Park	Nature Park	5/21/07	32.07	27.6390	Huffman	PURCHASE	OWN	\$293,500.00	\$ -	\$293,500.00	HUFFMAN MP\HUMP05212007
Waag	A01000100020003500	A01000100020003500		Greene	Nature Park	Nature Park	5/21/07		4.4330	Huffman	PURCHASE	OWN	\$293,500.00	\$ -	\$293,500.00	HUFFMAN MP\HUMP05212007
Huffman Prairie CA				Greene	Conservation Area	Conservation Area	3/26/13	111.000		Huffman Prairie CA	AGREEMENT	PARTNERSHIP	\$ -	\$ -	\$0.00	HUFFMAN MP\HUMP03262013

Amenity	Units
CXT Restroom	2

Per/unit hours*Year	Total Hours/Year
94.75	189.50

Lookup	Project	Amenity	Task	Units	Measurement	Time per Unit	Time	Frequency	Total Time	Time/Unit/Year	Comments
Parking LotCleaning	01 Kauffman road area	Parking Lot	Cleaning	50	Spaces	0.0013475	0.0673750	363	24.457	0.489	
Parking LotBlow	01 Kauffman road area	Parking Lot	Blow	50	Spaces	0.001666667	0.0833333	104	8.667	0.173	
Parking LotSnow Removal	01 Kauffman road area	Parking Lot	Snow Removal	50	Spaces	0.028	1.4000000	10	14.000	0.280	
Trash CansDaily Cleaning	01 Kauffman road area	Trash Cans	Daily Cleaning	3	unit	0.016666667	0.0500000	363	18.150	6.050	
Trash CansFixture Maintenance	01 Kauffman road area	Trash Cans	Fixture Maintenance	3	unit	0.333333333	1.0000000	1	1.000	0.333	
Picnic TablesFixture Maintenance	01 Kauffman road area	Picnic Tables	Fixture Maintenance	6	unit	1	6.0000000	1	6.000	1.000	
BenchFixture Maintenance	01 Kauffman road area	Bench	Fixture Maintenance	3	unit	0.5	1.5000000	1	1.500	0.500	
CXT RestroomCleaning	01 Kauffman road area	CXT Restroom	Cleaning	2	Stall	0.25	0.5000000	363	181.500	90.750	
CXT RestroomPressure Wash	01 Kauffman road area	CXT Restroom	Pressure Wash	2	Stall	0.5	1.0000000	4	4.000	2.000	
CXT RestroomFixture Maintenance	01 Kauffman road area	CXT Restroom	Fixture Maintenance	2	Stall	2	4.0000000	1	4.000	2.000	
ShelterAfter Reservation Cleaning	01 Kauffman road area	Shelter	After Reservation Cleaning	700	Square Feet	0.000714286	0.5000000	90	45.000	0.064	
ShelterDaily Cleaning	01 Kauffman road area	Shelter	Daily Cleaning	700	Square Feet	0.000357143	0.2500000	26	6.500	0.009	
ShelterPressure Washing	01 Kauffman road area	Shelter	Pressure Washing	700	Square Feet	0.001428572	1.0000001	12	12.000	0.017	
ShelterFixture Maintenance	01 Kauffman road area	Shelter	Fixture Maintenance	700	Square Feet	0.000238095	0.1666666	3	0.500	0.001	
ShelterMowing/Trimming	01 Kauffman road area	Shelter	Mowing/Trimming	700	Square Feet	0.000357143	0.2500000	20	5.000	0.007	
RoadwayRoad Mowing	01 Kauffman road area	Roadway	Road Mowing	0.047	mile	0.667	0.0313490	20	0.627	13.340	
RoadwayBlowing	01 Kauffman road area	Roadway	Blowing	0.047	mile	0.25	0.0117500	60	0.705	15.000	
RoadwayTree Removal/Trimming	01 Kauffman road area	Roadway	Tree Removal/Trimming	0.047	mile	40	1.8800000	1	1.880	40.000	
RoadwayLitter	01 Kauffman road area	Roadway	Litter	0.047	mile	0.333333333	0.0156667	363	5.687	121.000	
RoadwaySnow Removal	01 Kauffman road area	Roadway	Snow Removal	0.047	mile	1	0.0470000	10	0.470	10.000	
Pole LightsTrimming/Chemical Application	01 Kauffman road area	Pole Lights	Trimming/Chemical Application	5	Unit	0.016666667	0.0833333	20	1.667	0.333	
B&B TreesMulching/Watering/Pruning	01 Kauffman road area	B&B Trees	Mulching/Watering/Pruning	50	Tree	1	50.0000000	1	50.000	1.000	
Class 2 Floodplain Hiking TrailInspections	01 Kauffman road area	Class 2 Floodplain Hiking Trail	Inspections	1.033	mile	0.25	0.2582500	52	13.429	13.000	
Class 2 Floodplain Hiking TrailMowing	01 Kauffman road area	Class 2 Floodplain Hiking Trail	Mowing	1.033	mile	0.25	0.2582500	20	5.165	5.000	
Class 2 Floodplain Hiking TrailFloodplain Repairs and D	01 Kauffman road area	Class 2 Floodplain Hiking Trail	Floodplain Repairs and Debris Removal	1.033	mile	10	10.3300000	5	51.650	50.000	
Class 2 Floodplain Hiking TrailFloodplain Trimming and	01 Kauffman road area	Class 2 Floodplain Hiking Trail	Floodplain Trimming and Tree Removal	1.033	mile	40	41.3200000	1	41.320	40.000	
Class 2 Highland Hiking TrailInspections	02 MRT/Skills area connector	Class 2 Highland Hiking Trail	Inspections	1.394	Miles	0.25	0.3485000	52	18.122	13.000	
Class 2 Highland Hiking TrailMowing	02 MRT/Skills area connector	Class 2 Highland Hiking Trail	Mowing	1.394	Miles	0.5	0.6970000	20	13.940	10.000	
Class 2 Highland Hiking TrailHighland Trimming and Tr	02 MRT/Skills area connector	Class 2 Highland Hiking Trail	Highland Trimming and Tree Removal	1.394	Miles	40	55.7600000	1	55.760	40.000	
MTB trailInspections	03 MoMBA trails	MTB trail	Inspections	0.265	Mile	0.25	0.0662500	52	3.445	13.000	
MTB trailMowing	03 MoMBA trails	MTB trail	Mowing	0.265	Mile	0.5	0.1325000	20	2.650	10.000	
MTB trailTrimming and Tree Removal	03 MoMBA trails	MTB trail	Trimming and Tree Removal	0.265	Mile	2	0.5300000	52	27.560	104.000	
Concrete WalkBlowing	04 Huffman Dam paved trail	Concrete Walk	Blowing	1,125	Square Feet	0.00002	0.0225000	104	2.340	0.002	Fitness stations
Nature Play-SmallBi-Weekly Inspection	05 Huffman Dam paved trail enhancements	Nature Play-Small	Bi-Weekly Inspection	5	unit	0.166666667	0.8333333	26	21.667	4.333	Fitness stations
Nature Play-SmallRepairs and Annual Maintenance	05 Huffman Dam paved trail enhancements	Nature Play-Small	Repairs and Annual Maintenance	5	unit	4	20.0000000	1	20.000	4.000	
Multi-use TrailTrail Mowing	06 Huffman	Multi-use Trail	Trail Mowing	0.085	mile	0.667	0.0568284	20	1.137	13.340	
Multi-use TrailBlowing	06 Huffman	Multi-use Trail	Blowing	0.085	mile	0.25	0.0212500	60	1.275	15.000	
Multi-use TrailDaily Inspection/CLEANING	06 Huffman	Multi-use Trail	Daily Inspection/CLEANING	0.085	mile	0.333333333	0.0283333	363	10.285	121.000	
Multi-use TrailTree Removal/Trimming	06 Huffman	Multi-use Trail	Tree Removal/Trimming	0.500	mile	40	20.0000000	1	20.000	40.000	
CXT RestroomCleaning	06 Huffman	CXT Restroom	Cleaning	2	Stall	0.25	0.5	363	181.5	90.75	
CXT RestroomPressure Wash	06 Huffman	CXT Restroom	Pressure Wash	2	Stall	0.5	1	4	4	2	
CXT RestroomFixture Maintenance	06 Huffman	CXT Restroom	Fixture Maintenance	2	Stall	2	4	1	4	2	
Class 2 Highland Hiking TrailInspections	07 MoMBA connector	Class 2 Highland Hiking Trail	Inspections	0.757	mile	0.25	0.1892500	52	9.841	13.000	
Class 2 Highland Hiking TrailMowing	07 MoMBA connector	Class 2 Highland Hiking Trail	Mowing	0.757	mile	0.5	0.3785000	20	7.570	10.000	
Class 2 Highland Hiking TrailHighland Trimming and Tr	07 MoMBA connector	Class 2 Highland Hiking Trail	Highland Trimming and Tree Removal	0.757	mile	40	30.2800000	1	30.280	40.000	
Class 2 Floodplain Hiking TrailInspections	08 Huffman East Park	Class 2 Floodplain Hiking Trail	Inspections	1.325	mile	0.25	0.3312500	52	17.225	13.000	
Class 2 Floodplain Hiking TrailMowing	08 Huffman East Park	Class 2 Floodplain Hiking Trail	Mowing	1.325	mile	0.25	0.3312500	20	6.625	5.000	
Class 2 Floodplain Hiking TrailFloodplain Repairs and D	08 Huffman East Park	Class 2 Floodplain Hiking Trail	Floodplain Repairs and Debris Removal	1.325	mile	10	13.2500000	5	66.250	50.000	
Class 2 Floodplain Hiking TrailFloodplain Trimming and	08 Huffman East Park	Class 2 Floodplain Hiking Trail	Floodplain Trimming and Tree Removal	1.325	mile	40	53.0000000	1	53.000	40.000	
Hiking TrailsInvasive Plant Mgt.	Huffman East Park	Hiking Trails	Invasive Plant Mgt.	9.64	acres	1	9.6410000	1	9.641	1	30' both sides of proposed trail
Hiking TrailsPlant Survey's	Huffman East Park	Hiking Trails	Plant Survey's	420000.00	Sq Ft	0.000018	7.5600000	11	83.160	0.000	

Lookup	Amenity	Task	Time in Minutes	Time	Frequency	Unit	Notes
ADA Fishing SpotFlood Cleanup	ADA Fishing Spot	Flood Cleanup		0.5	5	Floods	
ADA Fishing SpotPressure Washing	ADA Fishing Spot	Pressure Washing		2.5	1	Unit	
ADA Walking LoopInvasive Plant Mgt.	ADA Walking Loop	Invasive Plant Mgt.		1	1	acres	
ADA Walking LoopPlant Survey's	ADA Walking Loop	Plant Survey's		0.0002	11	Square Feet	Wegerzyn
B&B ShrubsMulching/Watering/Pruning	B&B Shrubs	Mulching/Watering/Pruning	30	0.5	1	Shrub	
B&B TreesMulching/Watering/Pruning	B&B Trees	Mulching/Watering/Pruning	60	1	1	Tree	
BenchFixture Maintenance	Bench	Fixture Maintenance	30	0.5	1	Unit	
Bioswale/Rain GardenAnnual Maintenance	Bioswale/Rain Garden	Annual Maintenance	240	4	1	Unit	
Bird viewing areasIndustrial Bat Box	Bird viewing areas	Industrial Bat Box		1	1	dollars	
Bird viewing areasMarsh Master to manage vegetation	Bird viewing areas	Marsh Master to manage vegetation		1	1	dollars	
Bird Viewing PlatformDaily Checks	Bird Viewing Platform	Daily Checks	1	0.016666667	363	Unit	
Bird Viewing PlatformFlood Cleanup	Bird Viewing Platform	Flood Cleanup	20	0.33333333	5	Unit	
BoardwalkAnnual Inspection	Boardwalk	Annual Inspection	0.036	0.0006	1	Linear Feet	
BoardwalkDaily Inspection	Boardwalk	Daily Inspection	0.0091	0.000151667	363	Linear Feet	Based on 6" Width
BoardwalkGraffiti/Structure Repairs	Boardwalk	Graffiti/Structure Repairs	0.54	0.009	1	Linear Feet	
BoardwalkMonthly Inspections	Boardwalk	Monthly Inspections	0.0091	0.000151667	12	Linear Feet	
BoardwalkPressure Wash/ Water Sealing	Boardwalk	Pressure Wash/ Water Sealing	0.87	0.0145	1	Linear Feet	
Campsite-GroupAfter Reservation Cleaning	Campsite-Group	After Reservation Cleaning	20	0.33333333	30	Campsite	
Campsite-GroupChecking/Cleaning	Campsite-Group	Checking/Cleaning	2	0.03333333	74	Campsite	
Campsite-GroupFirewood Prep and Delivery	Campsite-Group	Firewood Prep and Delivery	45	0.75	30	Campsite	
Campsite-GroupFixture Maintenance	Campsite-Group	Fixture Maintenance	240	4	1	Campsite	
Campsite-GroupMow/Trim	Campsite-Group	Mow/Trim	20	0.33333333	20	Campsite	
Campsite-SmallAfter Reservation Cleaning	Campsite-Small	After Reservation Cleaning	10	0.166666667	35	Campsite	
Campsite-SmallChecking/Cleaning	Campsite-Small	Checking/Cleaning	2	0.03333333	74	Campsite	
Campsite-SmallFirewood Prep and Delivery	Campsite-Small	Firewood Prep and Delivery	45	0.75	35	Campsite	
Campsite-SmallFixture Maintenance	Campsite-Small	Fixture Maintenance	120	2	1	Campsite	
Campsite-SmallMow/Trim	Campsite-Small	Mow/Trim	10	0.166666667	20	Campsite	
Class 2 Floodplain Hiking TrailFloodplain Repairs	Class 2 Floodplain Hiking Trail	Floodplain Repairs and Debris Removal	600	10	5	mile	
Class 2 Floodplain Hiking TrailFloodplain Trimming	Class 2 Floodplain Hiking Trail	Floodplain Trimming and Tree Removal	2400	40	1	mile	
Class 2 Floodplain Hiking TrailInspections	Class 2 Floodplain Hiking Trail	Inspections	15	0.25	52	mile	
Class 2 Floodplain Hiking TrailMowing	Class 2 Floodplain Hiking Trail	Mowing	15	0.25	20	mile	
Class 2 Highland Hiking TrailHighland Trimming	Class 2 Highland Hiking Trail	Highland Trimming and Tree Removal	2400	40	1	mile	
Class 2 Highland Hiking TrailInspections	Class 2 Highland Hiking Trail	Inspections	15	0.25	52	mile	
Class 2 Highland Hiking TrailMowing	Class 2 Highland Hiking Trail	Mowing	30	0.5	20	mile	
Concrete WalkBlowing	Concrete Walk	Blowing	0.0166667	0.00002	104	Square Feet	
Concrete WalkFlood Cleanup	Concrete Walk	Flood Cleanup	0.0166667	0.00028	5	Square Feet	
CXT RestroomCleaning	CXT Restroom	Cleaning	15	0.25	363		
CXT RestroomFixture Maintenance	CXT Restroom	Fixture Maintenance	120	2	1		
CXT RestroomPressure Wash	CXT Restroom	Pressure Wash	30	0.5	4		
Deer FencingWeekly Inspection/Repair	Deer Fencing	Weekly Inspection/Repair	0.01	0.000166667	52	Linear Feet	
Drinking FountainCleaning	Drinking Fountain	Cleaning	5	0.08333333	210	Unit	
Drinking FountainCleaning	Drinking Fountain	Cleaning	5	0.08333333			
Drinking FountainFixture Maintenance	Drinking Fountain	Fixture Maintenance	120	2	1	Unit	
Drinking FountainFixture Maintenance	Drinking Fountain	Fixture Maintenance	120	2			
Drinking FountainSpring Open	Drinking Fountain	Spring Open	60	1	1	Unit	
Drinking FountainSpring Open	Drinking Fountain	Spring Open	60	1			
Drinking FountainWinterize	Drinking Fountain	Winterize	30	0.5	1	Unit	
Drinking FountainWinterize	Drinking Fountain	Winterize	30	0.5			
DrivewaySnow Removal	Driveway	Snow Removal	60	1	10	Unit	
Equestrian ParkingBlow	Equestrian Parking	Blow	0.1	0.001666667	104		
Equestrian ParkingCleaning	Equestrian Parking	Cleaning	0.08085	0.0013475	363		
Equestrian ParkingTrimming/Chemical Application	Equestrian Parking	Trimming/Chemical Application	0.12	0.002	10		
Equestrian TrailHighland Trimming and Tree Removal	Equestrian Trail	Highland Trimming and Tree Removal	2400	40		Mile	
Equestrian TrailInspections	Equestrian Trail	Inspections	15	0.25	52	Mile	
Equestrian TrailMowing	Equestrian Trail	Mowing	30	0.5	20	Mile	
Equestrian TrailsInvasive Plant Mgt.	Equestrian Trails	Invasive Plant Mgt.		1	1	Acre	
Equestrian TrailsPlant Survey's	Equestrian Trails	Plant Survey's		0.0002	11	Square Feet	
Fishing DockAnnual Inspection	Fishing Dock	Annual Inspection	0.26	0.00433333	1	Linear Feet	
Fishing DockDaily Check	Fishing Dock	Daily Check	0.06	0.001	363	Linear Feet	
Fishing DockGraffiti/Repairs	Fishing Dock	Graffiti/Repairs	9.6	0.16	1	Linear Feet	
Fishing DockMonthly Inspections	Fishing Dock	Monthly Inspections	0.06	0.001	12	Linear Feet	
Fishing DockPressure Wash	Fishing Dock	Pressure Wash	0.4	0.006666667	1	Linear Feet	
Fishing DockWater Sealing	Fishing Dock	Water Sealing	3.2	0.05333333	1	Linear Feet	
Flush RestroomCleaning	Flush Restroom	Cleaning	15	0.25	363	Stall	
Flush RestroomFixture Maintenance	Flush Restroom	Fixture Maintenance	120	2	1	Stall	
Flush RestroomFlood Prep/Cleanup	Flush Restroom	Flood Prep/Cleanup	120	2	5	Stall	
Flush RestroomPresure Wash	Flush Restroom	Presure Wash	30	0.5	4	Stall	
Flush RestroomSpring Open	Flush Restroom	Spring Open	360	6	1	Stall	
Flush RestroomWinterize	Flush Restroom	Winterize	240	4	1	Stall	
GatesInspecting/Lubricating/ Repairs	Gates	Inspecting/Lubricating/ Repairs		4	1	Gate	
Handicapped Parking LotBlow	Handicapped Parking Lot	Blow	0.1	0.001666667	104	Space	
Handicapped Parking LotCleaning	Handicapped Parking Lot	Cleaning	0.08085	0.0013475	363	Space	
Handicapped Parking LotSnow Removal	Handicapped Parking Lot	Snow Removal	1.68	0.028	10	Space	
Hiking TrailsInvasive Plant Mgt.	Hiking Trails	Invasive Plant Mgt.		1	1	Acre	
Hiking TrailsPlant Survey's	Hiking Trails	Plant Survey's		0.0002	11	Square Feet	
Metal FencingChemical Application	Metal Fencing	Chemical Application	0.03	0.0005	6	Linear Feet	
Multi-use Trail bridgeDaily Inspection/Fixture maintenance/Vandalism/Annual Inspection	Multi-use Trail bridge	Daily Inspection/Fixture maintenance/Vandalism/Annual Inspection	120	2	1	Bridge	
Multi-use TrailBlowing	Multi-use Trail	Blowing	15	0.25	60	Mile	

Multi-use TrailDaily Inspection/cleaning	Multi-use Trail	Daily Inspection/cleaning	20	0.33333333	363	Mile
Multi-use trailInvasive Plant Mgt.	Multi-use trail	Invasive Plant Mgt.		1	1	Acre
Multi-use trailPlant Survey's	Multi-use trail	Plant Survey's		0.0002	11	Square Feet
Multi-use TrailTrail Mowing	Multi-use Trail	Trail Mowing	40	0.667	20	Mile
Multi-use TrailTree Removal/Trimming	Multi-use Trail	Tree Removal/Trimming	2400	40	1	Mile
Multi-use trailWetland Crossing Culvert/bridge	Multi-use trail	Wetland Crossing Culvert/bridge		1	1	dollars
Multi-use trailWetland Mitigation	Multi-use trail	Wetland Mitigation		1	1	\$65,000 dollars
Multi-use trailWetland Monitoring	Multi-use trail	Wetland Monitoring		1	1	\$17,000 dollars

National Rd. BridgeDaily Inspection/Fixture main	National Rd. Bridge	Daily Inspection/Fixture maintenance/Vandalism/Annual Inspection		0.05	363	Unit
Natural Area Deer Management-Culling	Natural Area	Deer Management-Culling	60	2.85	1	per year
Nature Play-LargeBi-Weekly Inspection	Nature Play-Large	Bi-Weekly Inspection	10	0.16666667	26	Nature Play
Nature Play-LargeDaily Inspection	Nature Play-Large	Daily Inspection	20	0.33333333	363	Nature Play
Nature Play-LargeRepairs and Annual Maintenance	Nature Play-Large	Repairs and Annual Maintenance	900	15	2	Nature Play
Nature Play-SmallBi-Weekly Inspection	Nature Play-Small	Bi-Weekly Inspection	10	0.16666667	26	Nature Play
Nature Play-SmallDaily Inspection	Nature Play-Small	Daily Inspection	5	0.08333333	363	Nature Play
Nature Play-SmallRepairs and Annual Maintenance	Nature Play-Small	Repairs and Annual Maintenance	240	4	1	Nature Play
New RoadInvasive Plant Mgt.	New Road	Invasive Plant Mgt.		1	1	Acre
New RoadPlant Survey's	New Road	Plant Survey's		0.0002	11	Square Feet

Observation Platform, Overlooks-Crushed gravel/	Observation Platform, Overlooks-Crushed gravel/stone	Daily Checks/Cleaning	1	0.01666667	104	Unit
Observation Platform, Overlooks-Crushed gravel/	Observation Platform, Overlooks-Crushed gravel/stone	Gravel maintenance after floods	20	0.33333333	5	Unit
Operations YardOrganize	Operations Yard	Organize		0.005	12	Square Yards
Operations YardSnow Removal	Operations Yard	Snow Removal		0.028	10	Square Yards
Parking LotBlow	Parking Lot	Blow	0.1	0.00166667	104	Space
Parking LotCleaning	Parking Lot	Cleaning	0.08085	0.0013475	363	Space
Parking LotSnow Removal	Parking Lot	Snow Removal	1.68	0.028	10	Space
PaversBlowing/Cleaning	Pavers	Blowing/Cleaning		0.00001667	363	Square Feet
PaversChemical Application	Pavers	Chemical Application		0.00005	4	Square Feet
PaversSanding/Sealing	Pavers	Sanding/Sealing		0.00160003	1	Square Feet

Pergola - Low Maintenance MaterialFixture Main	Pergola - Low Maintenance Material	Fixture Maintenance		0	1	Square Feet
Picnic TablesFixture Maintenance	Picnic Tables	Fixture Maintenance	60	1	1	Unit
Plantings - IntensiveFall Clean Up	Plantings - Intensive	Fall Clean Up		6.6	1	1000 Square Feet
Plantings - IntensiveFertilize	Plantings - Intensive	Fertilize		0.3		1000 Square Feet
Plantings - IntensiveHedging - small w/gas trimm	Plantings - Intensive	Hedging - small w/gas trimmers		1.5		100 Linear Feet
Plantings - IntensiveHedging - Tall	Plantings - Intensive	Hedging - Tall		2.85		100 Linear Feet
Plantings - IntensiveInsect and Disease Inspection	Plantings - Intensive	Insect and Disease Inspection		0.3		1000 Square Feet
Plantings - IntensiveLeaf Removal - By hand	Plantings - Intensive	Leaf Removal - By hand		0.42		1000 Square Feet
Plantings - IntensiveMulch Leaf Compost	Plantings - Intensive	Mulch Leaf Compost		0.83		1000 Square Feet
Plantings - IntensivePruning Shrubs	Plantings - Intensive	Pruning Shrubs		0.5		Shrub
Plantings - IntensiveSpring Bed Prep	Plantings - Intensive	Spring Bed Prep		3.3	1	1000 Square Feet
Plantings - IntensiveWeeding	Plantings - Intensive	Weeding		1		1000 Square Feet
Plantings - Low IntensityFall Clean Up	Plantings - Low Intensity	Fall Clean Up		3.3	1	1000 Square Feet
Plantings - Low IntensityFertilize	Plantings - Low Intensity	Fertilize		0.3	1	1000 Square Feet
Plantings - Low IntensityInsect and Disease Inspe	Plantings - Low Intensity	Insect and Disease Inspection		0.3	1	1000 Square Feet
Plantings - Low IntensityLeaf Removal	Plantings - Low Intensity	Leaf Removal		0.1	1	1000 Square Feet
Plantings - Low IntensityWeedless Intensive	Plantings - Low Intensity	Weedless Intensive		0.25	1	1000 Square Feet

Pole LightsTrimming/Chemical Application	Pole Lights	Trimming/Chemical Application	1	0.01666667	20	Light
Prairie TrailInspections	Prairie Trail	Inspections	15	0.25	12	Mile
Prairie TrailMowing	Prairie Trail	Mowing	15	0.25	20	Mile
Public ArtworkDaily Checks	Public Artwork	Daily Checks	2	0.03333333	363	Unit
River Access PointDaily Checks	River Access Point	Daily Checks	1	0.01666667	363	Unit
River Access PointFlood Cleanup	River Access Point	Flood Cleanup	20	0.33333333	5	Unit
River AccessClearing	River Access	Clearing		1	1	Unit
Road Removal RestorationHerbaceous plants- se	Road Removal Restoration	Herbaceous plants- seed Labor		1.4	1	acres
Road Removal RestorationPlant trees, shrubs	Road Removal Restoration	Plant trees, shrubs		0.2	1	trees
Road Removal RestorationSeed cost per acre	Road Removal Restoration	Seed cost per acre		2.3	1	dollars
Road Removal RestorationSeed cost per acre-\$25	Road Removal Restoration	Seed cost per acre-\$2552.00		2.3	1	dollars
Road Removal RestorationTube Maint. & Monito	Road Removal Restoration	Tube Maint. & Monitoring		0.047	1	trees

Roadway bridge Fixture maintenance/Vandalism,	Roadway bridge	Fixture maintenance/Vandalism/Annual Inspection	120	2	1	Bridge
RoadwayBlowing	Roadway	Blowing	15	0.25	60	Mile
Roadwaylitter	Roadway	litter	20	0.33333333	363	Mile
RoadwayRoad Mowing	Roadway	Road Mowing	40	0.667	20	Mile
RoadwaySnow Removal	Roadway	Snow Removal	60	1	10	Mile
RoadwayStriping	Roadway	Striping		0		Mile
RoadwayTree Removal/Trimming	Roadway	Tree Removal/Trimming	2400	40	1	Mile

Shelter AreaIndustrial Bat Box	Shelter Area	Industrial Bat Box		1	1	dollars
ShelterAfter Reservation Cleaning	Shelter	After Reservation Cleaning	0.04285714	0.000714286	90	Square Feet
ShelterDaily Cleaning	Shelter	Daily Cleaning	0.02142857	0.000357143	26	Square Feet
ShelterFixture Maintenance	Shelter	Fixture Maintenance	0.01428571	0.000238095	3	Square Feet
ShelterFlood Cleanup	Shelter	Flood Cleanup	0.08571429	0.001428572	5	Square Feet
ShelterMowing/Trimming	Shelter	Mowing/Trimming	0.02142857	0.000357143	20	Square Feet
ShelterPressure Washing	Shelter	Pressure Washing	0.08571429	0.001428572	12	Square Feet

SignsTrimming/Spraying/Cleaning/Vandalism/In	Signs	Trimming/Spraying/Cleaning/Vandalism/Inspections	15	0.25	1	Sign
StepsInspections	Steps	Inspections		0.0009610	12	Step
Trash CansDaily Cleaning	Trash Cans	Daily Cleaning	1	0.01666667	363	Unit
Trash CansFixture Maintenance	Trash Cans	Fixture Maintenance	20	0.33333333	1	Unit

[illegible]