

4.0 Master Planning Process

1. Established a working core team
 1. Representatives from each functional area
 1. Beth Burke- Interpretation Coordinator
 2. Carrie Scarff-Chief of Planning and Projects
 3. Chris Landis- Park Manager
 4. Doug Horvath- Education Coordinator
 5. Eric Sauer- Planning Manager
 6. Karen Hesser- Chief of Operations
 7. Laura Stevens- Interpretation Coordinator
 8. Mary Klunk- Conservation Manager
 9. Mike Enright- Conservation Manager
 10. Randy Ryberg- Outdoor Recreation Coordinator
 11. Ron Bicknell- Regional Manager
 12. Trevor Hagedorn- Business Services Manager
2. Retained consultants
 1. KMS Design/ Alta Planning and Design
 1. (KMS was purchased by Alta during the project)
 2. Provided background documents and base map information
 1. GIS Data
 2. Property Data
 3. Conservation Files
 4. Park History
 5. Previous Master Plan
3. Public Relations
 1. Park Banners
 1. Placed at park entrances about 30 days before open houses
 2. Parkways
 3. Social Media
 4. FRMP Electronic Newsletters
 5. Direct emails
 6. Surveys
 1. In park intercept surveys
 2. Open House surveys
4. Two Day work session
 1. **Tuesday September 27th, 2016**
 1. 8:00- 9:00 AM Kick Off Meeting- Meet with core team at Park
 2. 9:00-11:00 AM- Drive and initial tour of the park
 3. 11:00-11:30- Quick Lunch/ travel to open house
 4. 11:30 AM till 1:30 PM Open House: - Miami Township Library Branch- 2718 Lyons Road
 5. 1:45-3:00 Meet with FRMP Operations Staff- Cox
 6. 3:00-4:30 Meet with interpretive staff- Cox
 7. 4:30-5:30- Dinner

8. 6:00 PM till 8:00 PM- Miamisburg Library Branch- 35 South 5th Street, Miamisburg, Ohio 45342
2. **Wednesday September 28th, 2016**
 1. 8:00-11:00 Walking and in depth tour of the park- Site analysis (includes public safety)
 2. 11:30-1:00 Meet with key volunteers (Lunch)- Cox
 3. 1:00-2:00 Meet with community stakeholders- Miami Township, Miamisburg- Cox
 4. 2:00-3:00 Meet with Program Staff- Cox
 5. 3:00-5:00 Meet with core team for wrap up- Cox
 6. Consultant Team departs
5. Develop meeting notes
 1. Core team review and comments provided to the consultant
6. Develop program
 1. Core team review and comment
7. Developed concept alternatives
 1. Presentation to the Core Team
 2. Core Team and Staff Comments
8. Develop Pre-final site plan
 1. Presentation to the Core Team
 2. Core Team and Staff Comments
9. Public feedback
 1. Public Open House
 1. Notified participants by email
 2. Posted meeting on social media and website
 2. Post Pre-final plan online for public comment
10. Final plan development
 1. Site Plan
 2. Capital Improvement Estimate
 3. Established 10 top priority projects
 4. Developed Projections
 1. Narratives and project cost estimates
 1. Parks and Conservation
 2. Programing and Interpretation
 3. Business Operations
 4. Public Safety
 5. Philanthropy

MEDLAR METROPARK
Park Position Description
6/20/18

Medlar MetroPark is a planned park addition to the FRMP system that currently offers a paved trail, the Great-Little Trail that connects to the Great Miami Bikeway, with a parking lot and trail head. Medlar's 389 acres was assembled in an effort to protect open space and provide future parkland in an anticipated growth area of southern Montgomery County ahead of the construction on the Austin Road interchange at Interstate 75. The land was protected through several purchases of agricultural land and wooded hillside starting on the Miamisburg Plateau descending to Dayton Cincinnati Pike along the Great Miami River. The site is bisected by Medlar Road. The eastern, upper half of the property is relatively flat and is anchored by the former Rice house at the corner of Austin Boulevard and Medlar Road, across from Medlar Elementary School, and includes wetlands that were constructed as a mitigation project. The western portion of the property offers a rich, wooded hillside before flattening out into floodplain and includes a fishing pond, barn, and the remnant of an aqueduct on the Miami and Eric Canal.

Though the area immediately around the site remains largely undeveloped, land to the east has experienced significant commercial and office growth since the construction of the interchange. Zoning for Miami township reflects continued expansion of development, including potential residential development in the area east of the site. Current large populations in the surrounding area exist largely to the north in Miamisburg, to the west in Miami Township, as well as in Franklin and Springboro to the south in Warren County. Though zoning immediately around the site remains agricultural, Medlar area has the potential to be surrounded by a dense housing and development. In contrast, west of the site is buffered by Crains Run Park adjacent to the Great Miami River.

Medlar MetroPark, when developed, will be classified as a nature park based on the typology system established in the CMP. The classification reflects the future blend of ecosystem services and the natural setting with human services. The park will offer fewer amenities and have less human activity per acre than the more concentrated community parks. Staff input that guided the development of the site plan emphasized taking advantage of the great educational opportunities provided by combination of diverse habitats and the elementary school across the road, the existing bikeway in the park and the additional natural surface trails that could diverge from there, and day use opportunities such as picnicking, hiking, and wildlife observation for the anticipated dense population surrounding the park. Considering more destination level activities, staff and the consultants focused on the existing barn as a potential event venue and to opportunity to develop an extensive nature play site using the natural terrain at the west end of the site.

FRMP's core interpretive storylines relevant to Medlar are that active conservation efforts protect land for future generations and that each park within the FRMP system tells a story from the past. Specific to the Medlar site is the theme that the land is always changing from prehistory dwellers to a transportation hub to farmland, and now, through active conservation, the site is returning to wetlands, open meadows, forests, and prairies to immerse us in nature in our developing world.

The Medlar site will be a significant natural open space park in the midst of what is predicted to be an area densely populated with office, commercial, and residential properties, thus offering a nearby respite and connection to nature to significant numbers of people through picnicking, hiking, cycling, and wildlife exploration. The density of that constituency suggests that such destination amenities such

as an event venue, nature play area, and education facility, buoyed by the adjacent elementary school. Medlar's identity in the FRMP system will emerge as a park that provides nearby nature to a heavily developed area of the county with a variety of amenities to suit many interests.

Medlar Conservation Area Site Master Plan Meeting Observations September 27 & 28, 2016

Day One:

Kick Off Meeting: introductions and overview of the site

Positives:

- Staff in attendance represented the needed topic areas well and was prepared to talk about initial observations and ideas.
- Consultant had spent time on the site so was prepared to discuss the site from their perspective.

Even Better Ifs:

- Provide seating for the number of staff in attendance.
- Provide an agenda for the meeting that focuses the discussion

Initial Tour of the Park:

Positives:

- Visited the aqueduct area, bike trail connection, barn and pond.
- Visited Crains Run Nature Park
- This was valuable to continue discussions from the kick off meeting.

Even Better Ifs:

- Had one of the large vans to keep all together

Lunch/ Travel:

Positives:

- Having lunch for the team was needed
- Marion's pizza was good to be able to eat as breaks opened up

Even Better Ifs:

- Delivery of the food would have been best
- Ensure sufficient time (30 minutes) for eating and set up for the open house

Open House:

Positives:

- Entire team was able to engage participants
- Four stations plus the welcome and typology station worked well
- Time was adequate for participants
- Participants had good access to consultants and staff
- Staff introduction after the open house started worked well

Even Better Ifs:

- Assign a "Door Keeper" to engage visitors that arrive early until room is ready
- Conduct a preliminary review of the open houses at the initial kick off meeting to give staff time to prepare for the meetings
- Include a "How I Heard About the Meeting" section on the sign in sheet

Operations Staff Meeting:

Positives:

- Good well-informed discussions were conducted
- Staff responded well to consultant's questions about how to set up the park

Even Better Ifs:

- Challenge of not having full time operations staff at park hindered the discussion some.

Interpretive Meeting:

Positives:

- Good staff interactions to discuss overall themes for the park
- Staff felt they obtained the information they needed out of the meeting in order to move forward on interpretive plans

Even Better Ifs:

- Provide a break between meetings to allow a bathroom/email/phone call time

Dinner:

Positives:

- Having dinner for the team was needed
- Delivery of food was good.
- Allowed time for additional discussion and time for mentally preparing for the evening open house
- Allowed sufficient time to get to the evening open house for set up

Even Better Ifs:

- Confirm with food providers they are providing plates/ utensils
- Having a non-team lead to handle interaction with vendor would be good

Evening Open House:

Positives:

- Meeting was attended by about 20 people, about the same as mid-day
- Staff was well prepared and knew where they needed to be
- Time allotted was good
- See comments from open house above

Even Better Ifs:

- Room could have been larger

Day Two:

Walking Tour:

Positives:

- Scheduled time would have been about right
- Walking time to woods and ravine was good
- Opportunity to discuss ideas along the walk
- Utilized time well for discussions due to cutting the tour short due to weather
- Site tour time allowed flexibility and opportunity to work the walk later in the afternoon

Even Better Ifs:

- Time had to be cut short due to weather
- Ensure a schedule for touring park with park manager
- Understand OC protocols for lighting

Lunch:

Positives:

- Utilized time over lunch for additional staff/ consultant discussions related to the program

Even Better Ifs:

- RSVP and ensure volunteers will be participating
- Might be better if lunch was just staff and volunteers came for just a regular meeting time

Community Stakeholder Meeting:

Chris Fine and Katie Frank from the City of Miamisburg participated

Positives:

- Very valuable meeting to gain insight from the stakeholder perspective
- Gained insight related to park connections to other areas of the surrounding municipalities
- Staff from Miamisburg was well prepared for the discussion

Even Better Ifs:

- Look at potential question areas for the stakeholders in preparation for the meeting
- Ensure to follow up for RSVP's to understand who was coming

Program Staff:

Positives:

- Good discussion between staff and consultant

Even Better Ifs:

- Staff not having worked at the site before was a challenge similar to operations staff
- Staff arriving for the meeting asked for some general concepts about where we were leaning on the program so far to help them in the discussion. Provide this as possible in other meetings.

Wrap Up Meeting:

Positives:

- Came away from all discussions for the day with a good overall direction for the plan
- Time spent on this area was well spent

Even Better Ifs:

-

Overall Observations:

Positives:

- Overall format with staff and the consultant should result in a high quality plan

Even Better Ifs:

- Try to schedule in some basic breaks for calls/ emails and restroom breaks.
- Providing the consultant team a tour of some other MetroParks prior to the two days would be valuable
- If budget would permit, at least a partial third day with a few very key staff and the consultant to spend some additional time on site could add value to the process.

Ensuring the

Staffing Level Observations:

Positives:

- Large staff commitment of time but created a very rich exchange of ideas and input
- Having a diverse set of perspectives in all of the areas of discussion was very good.

Even Better Ifs:

- Not switching key team member staff out during the day if at all possible

Medlar Conservation Area- FRMP

Community Listening Session, 9/27/2016

Points of Discussion

- Strengths – What is great about Medlar? Why do you go there?
- Weaknesses – what could be improved upon to enhance your experiences?
- What can be added to improve user experience of Medlar?
- What are your concerns about Medlar (safety, ecology, maintenance)?

Site Accessibility – Entrances, parking, trails

Circulation – hierarchy of trails, wayfinding, connectivity, rest areas

Amenities – restroom facilities, picnic structures, active recreation spaces

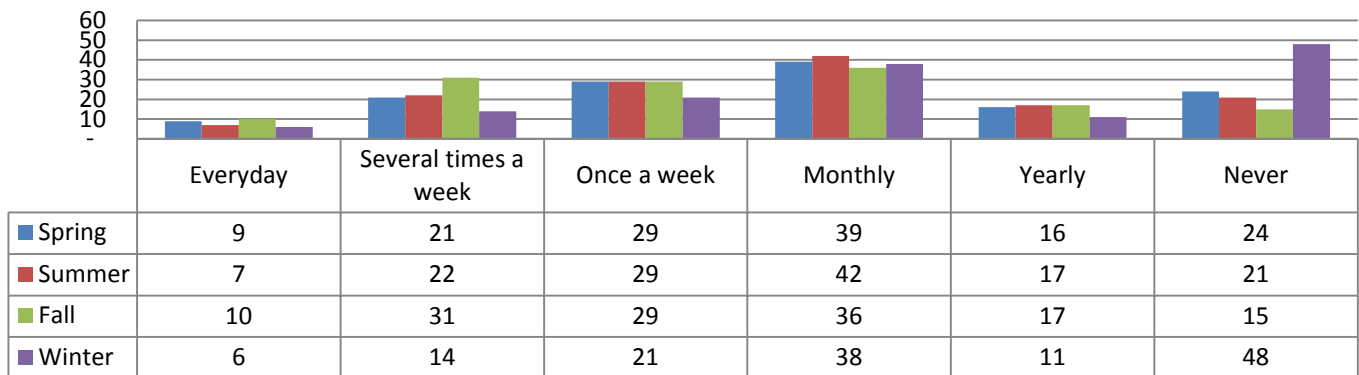
Programming – education, exercise, nature (birdwatching), entertainment, equestrian use.

Interpretive elements – interactive, or educational trails/spaces.

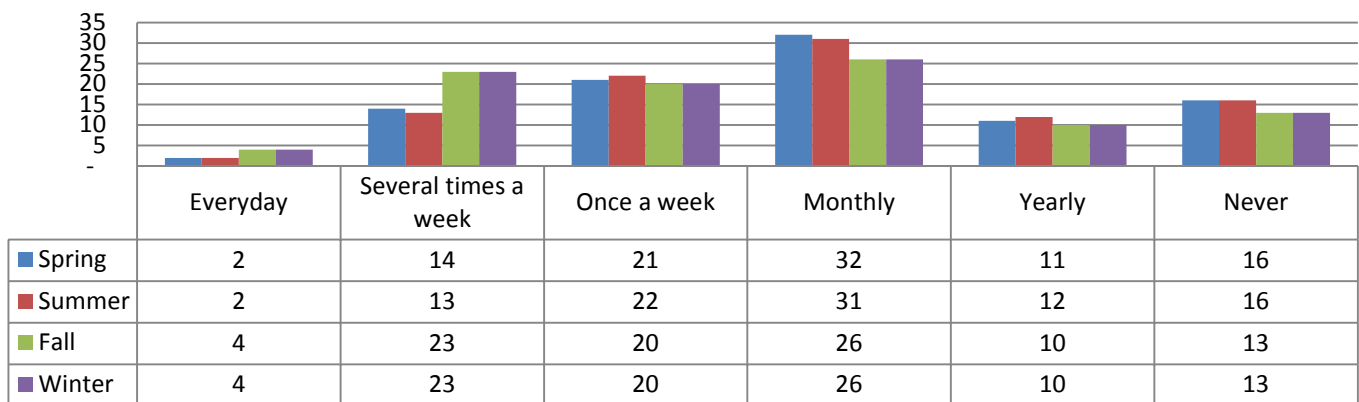
Activities – exercise, Frisbee golf, active recreation, children's play, education, volunteering, camping, bicycling.

Trail Systems – theme - based trails (bicycling, jogging, hiking, birdwatching, meadow, wetland, disc golf, equestrian)

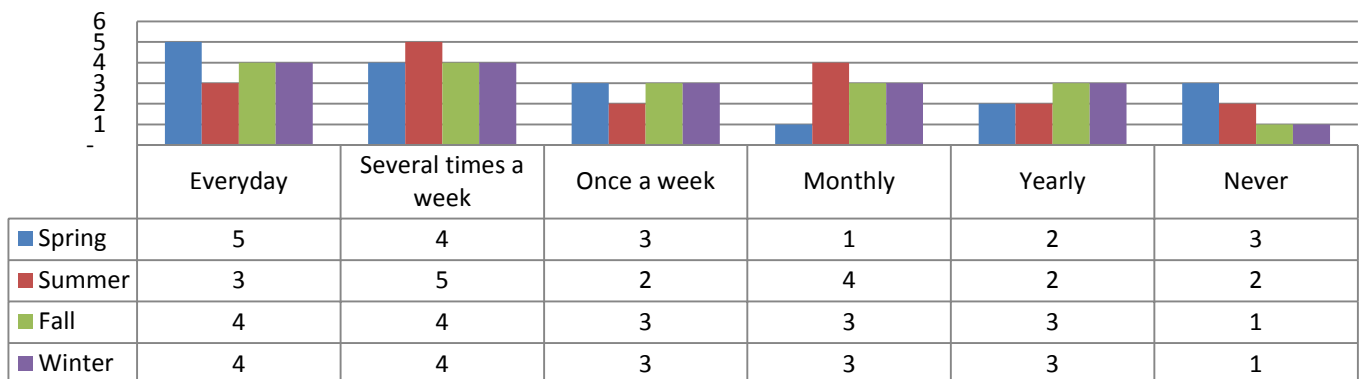
About how often do you visit Medlar Conservation Area? (All respondents)



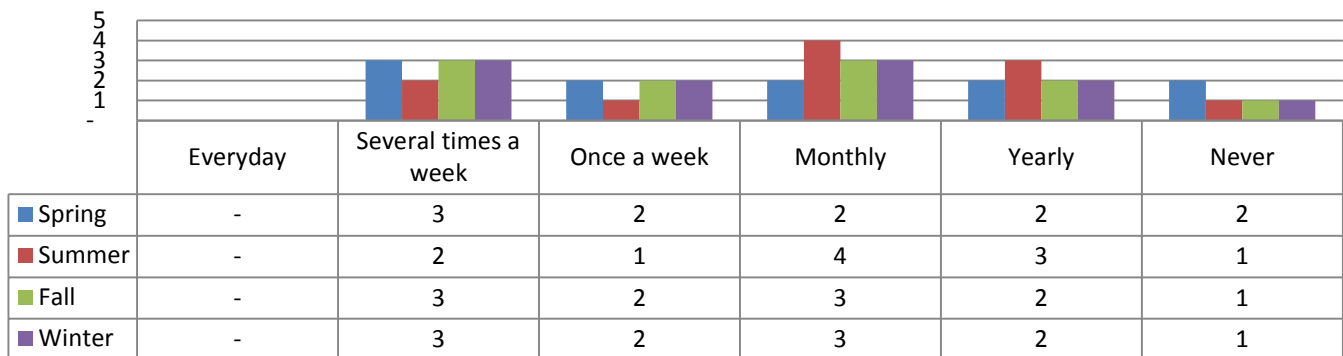
About how often do you visit Medlar Conservation Area? (Web respondents)



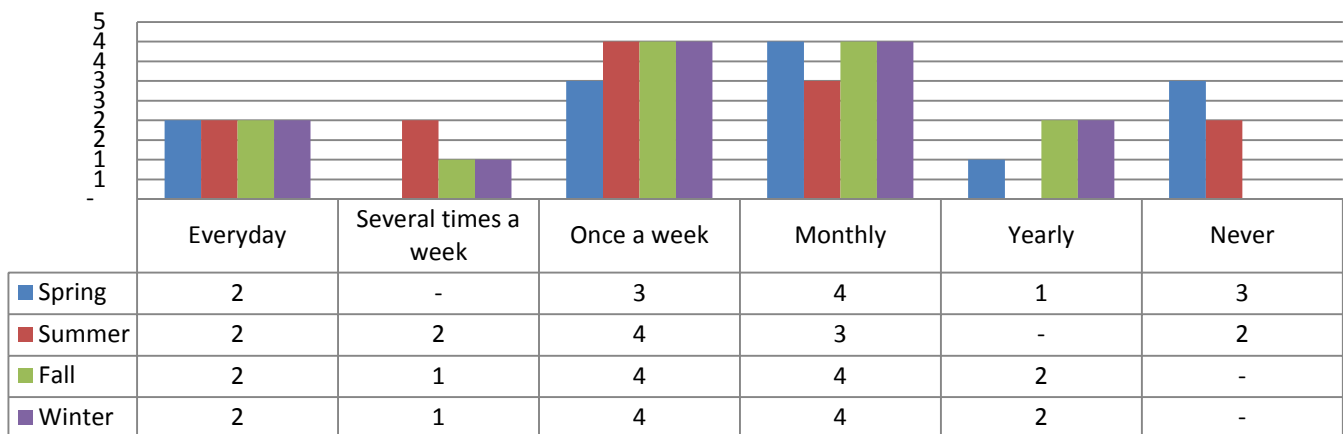
About how often do you visit Medlar Conservation Area? (Paper respondents)



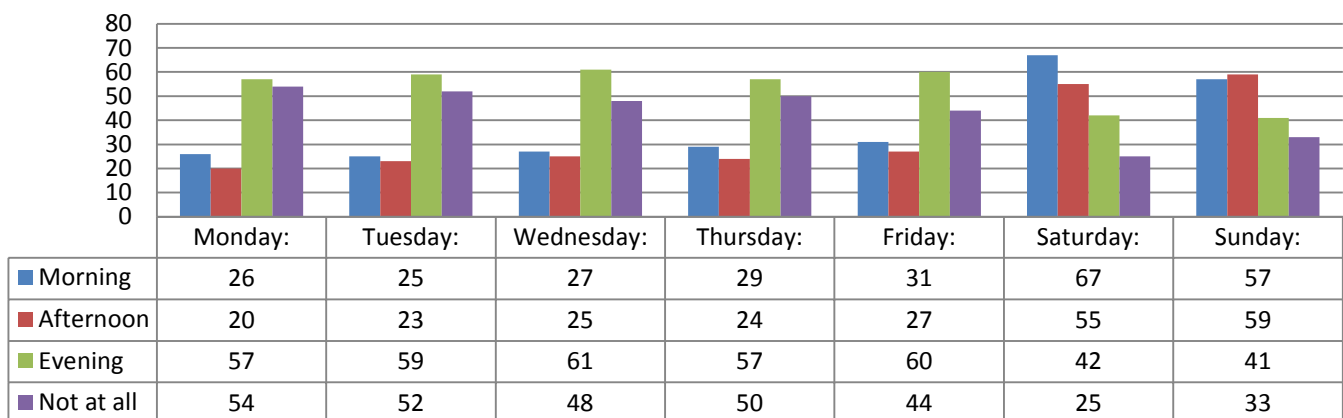
About how often do you visit Medlar Conservation Area? (Staff respondents)



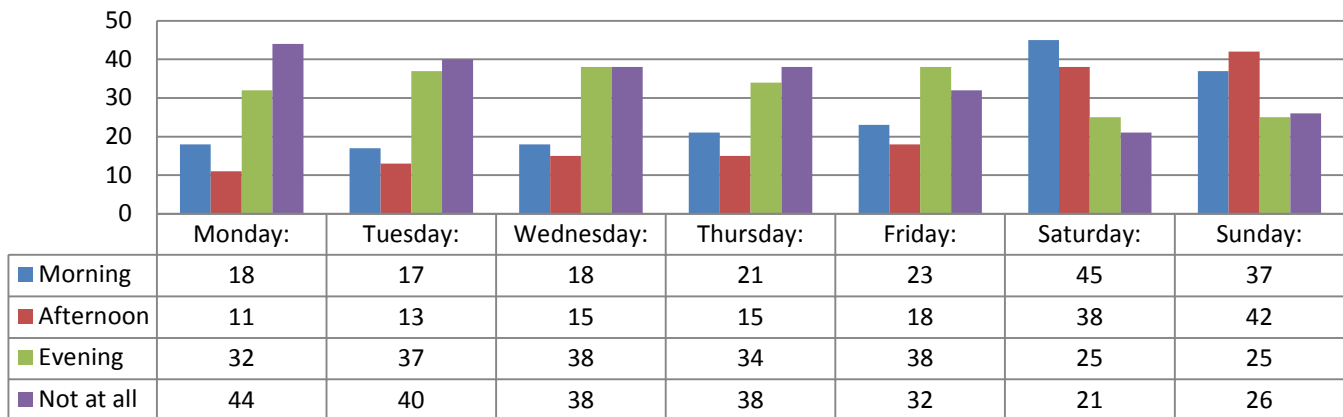
About how often do you visit Medlar Conservation Area? (Intercept respondents)



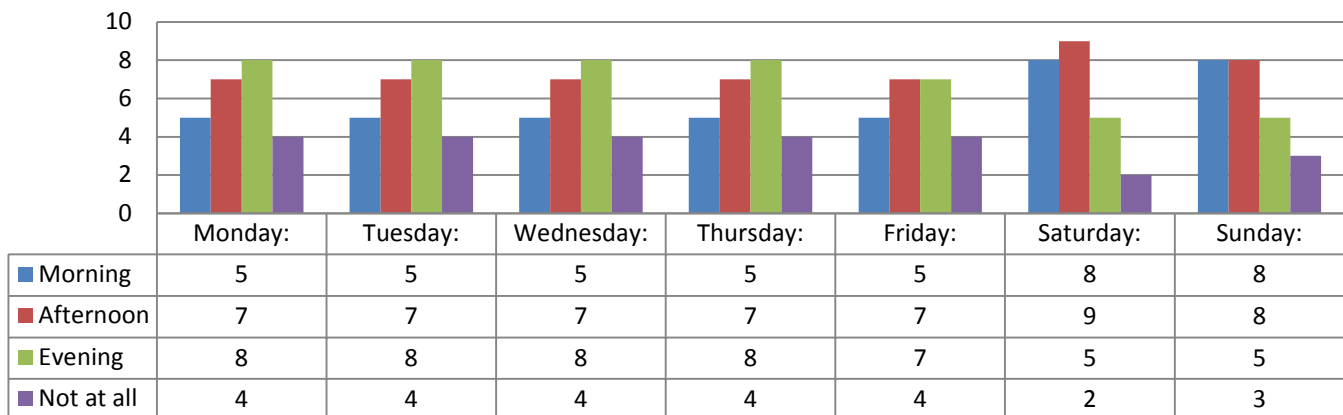
When do you typically visit Medlar Conservation Area? (All respondents)



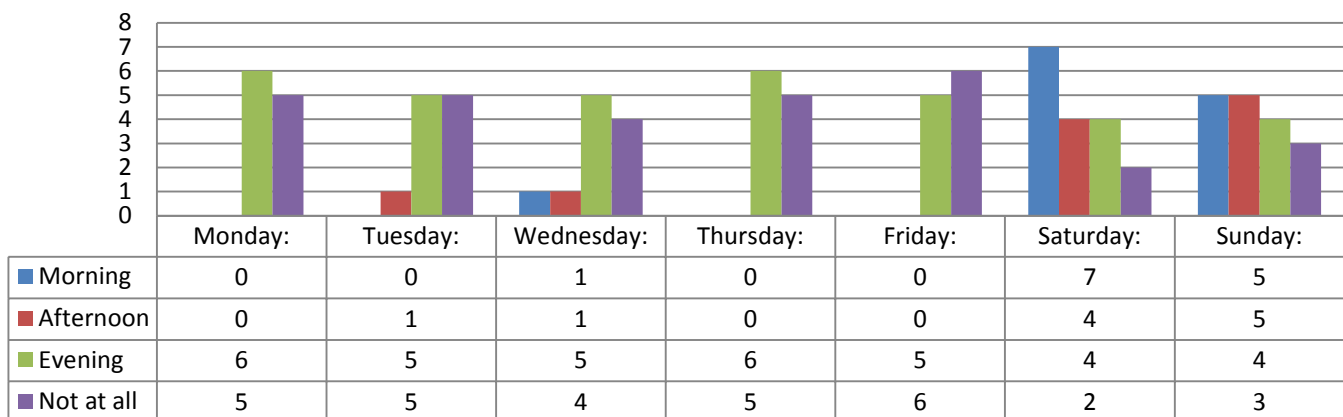
When do you typically visit Medlar Conservation Area? (Web respondents)



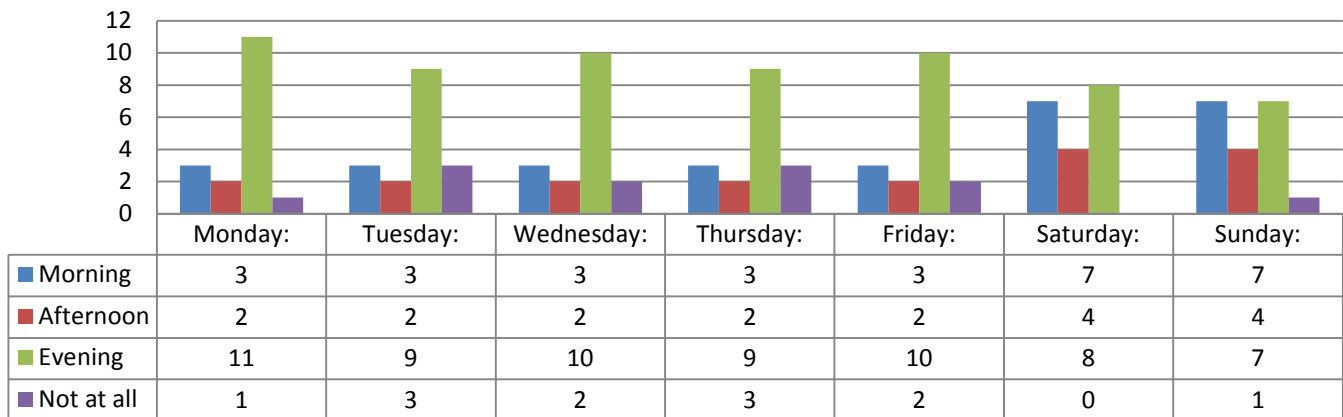
When do you typically visit Medlar Conservation Area? (Paper respondents)



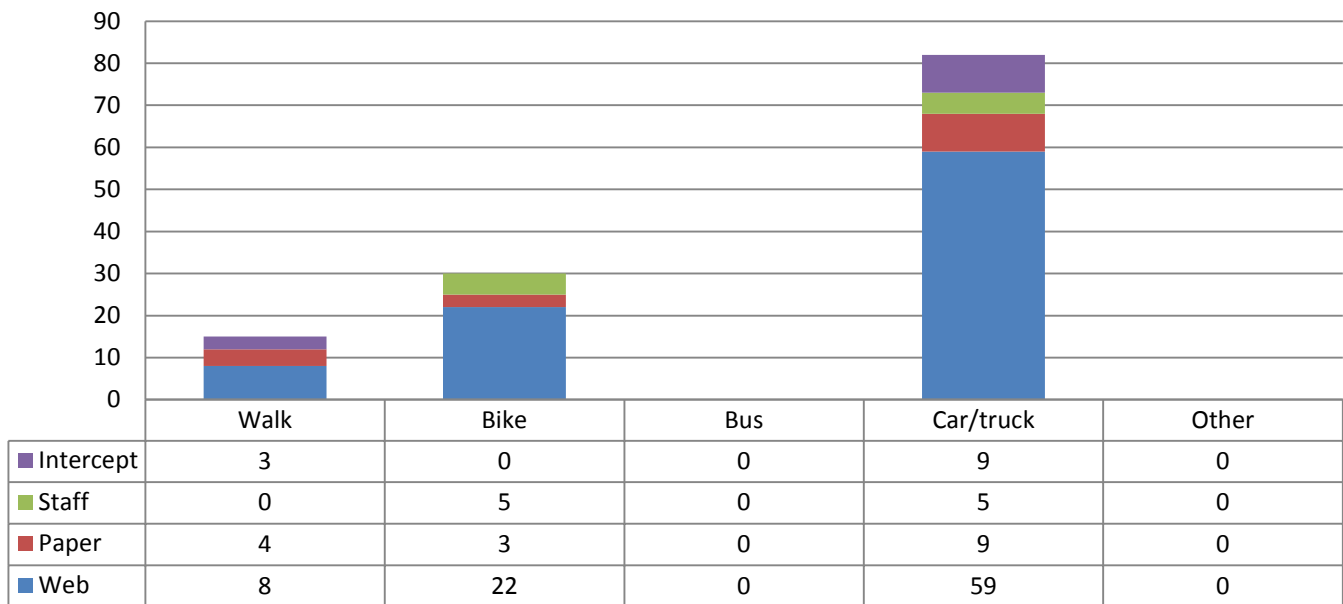
When do you typically visit Medlar Conservation Area? (Staff respondents)



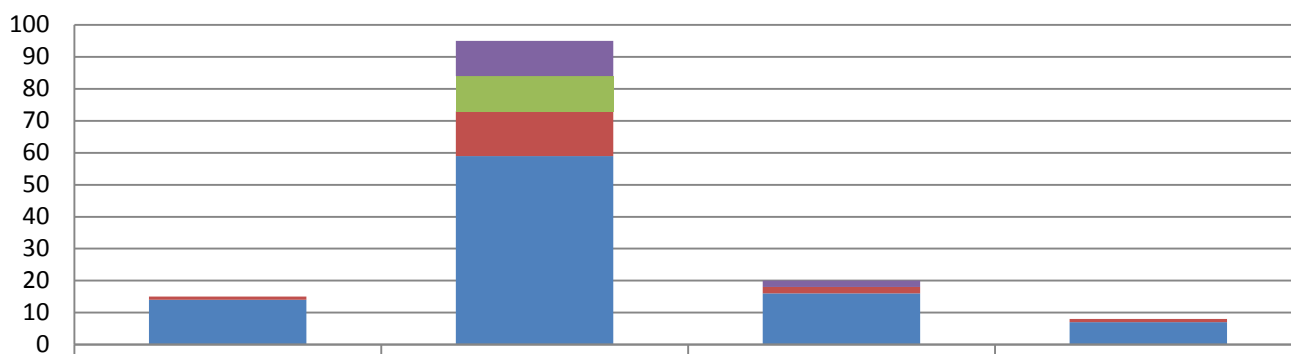
When do you typically visit Medlar Conservation Area? (Intercept respondents)



How do you typically get to Medlar?

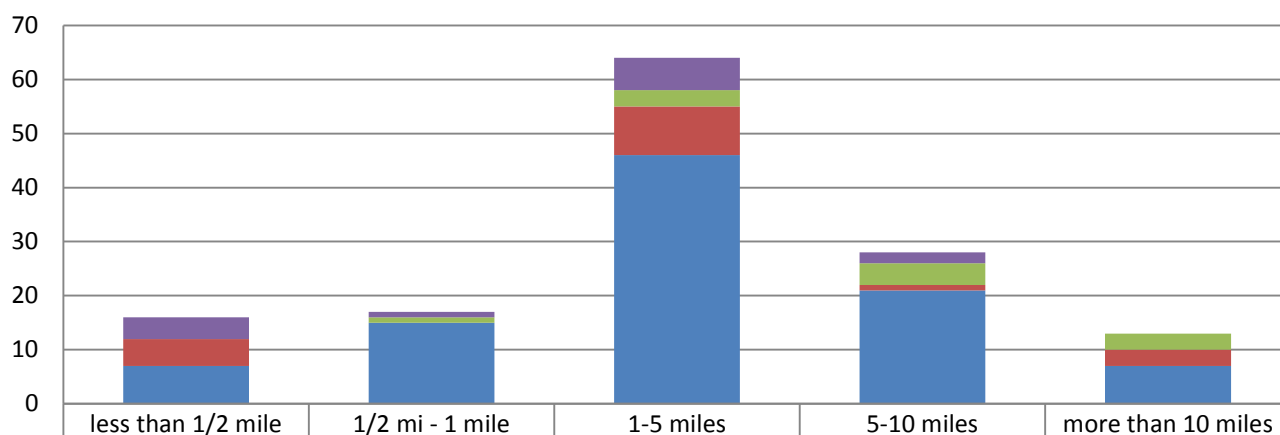


How long do/ would you typically stay in the park on each visit?

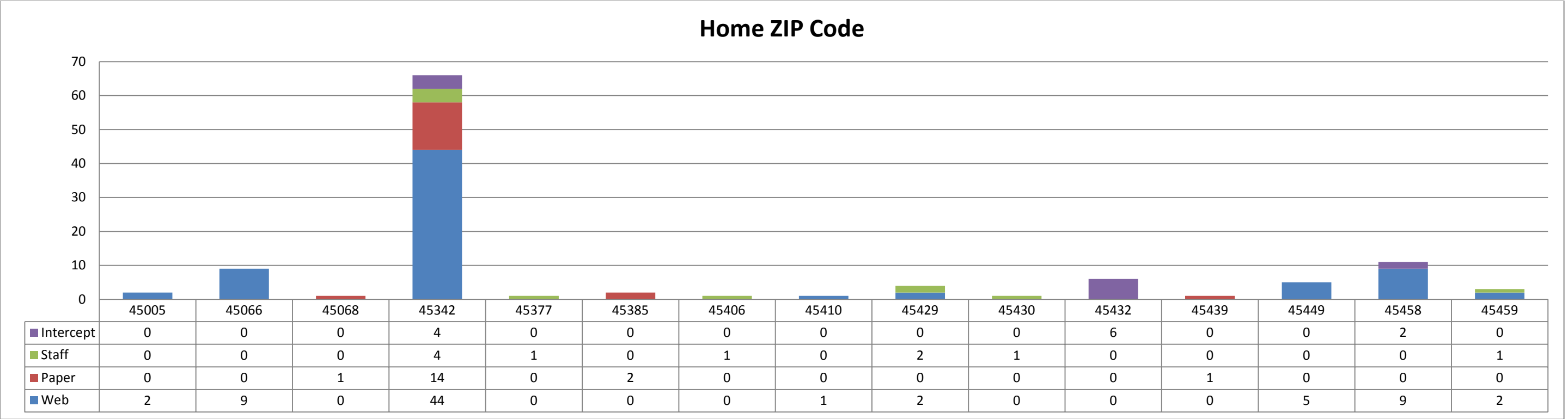


Intercept	0	11	2	0
Staff	0	11	0	0
Paper	1	14	2	1
Web	14	59	16	7

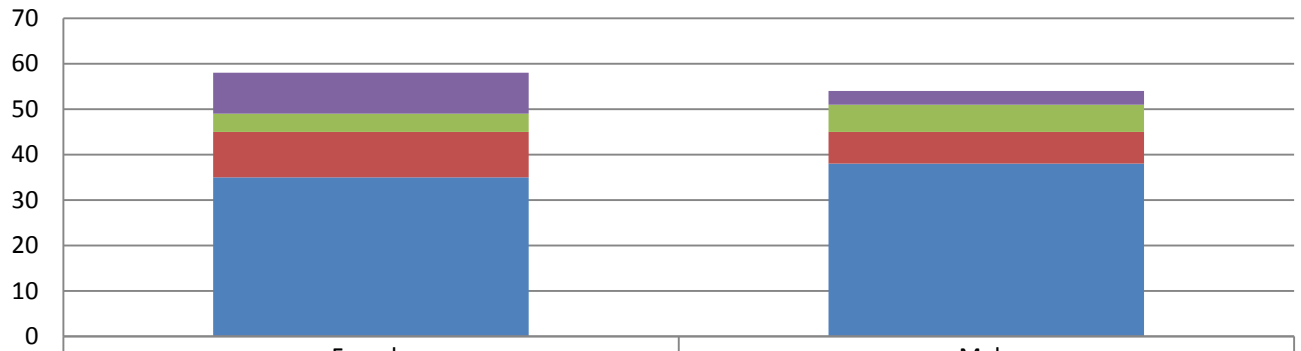
How far do you live from Medlar Conservation Area?



Intercept	4	1	6	2	0
Staff	0	1	3	4	3
Paper	5	0	9	1	3
Web	7	15	46	21	7

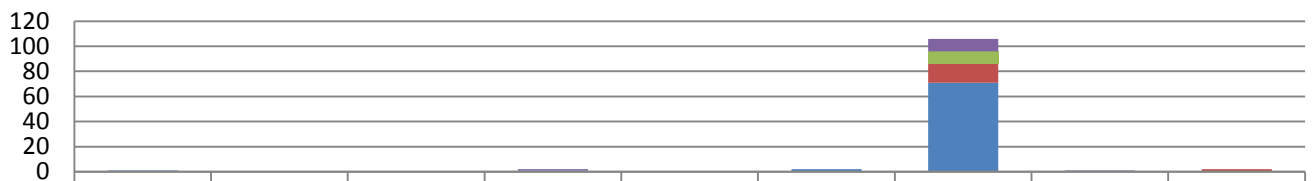


Gender of Respondents



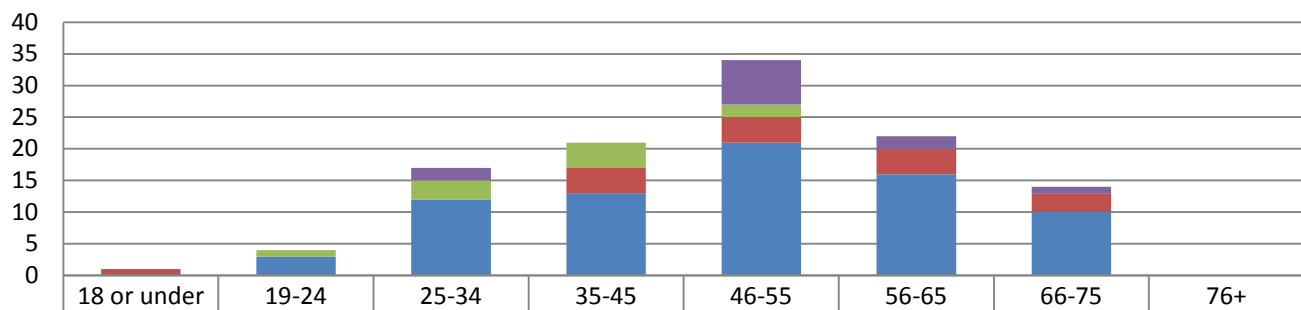
Intercept	9	3
Staff	4	6
Paper	10	7
Web	35	38

Race of Respondents



Intercept	0	0	0	1	0	0	10	1	0
Staff	0	0	0	0	0	0	10	0	0
Paper	0	0	0	0	0	0	15	0	2
Web	1	0	0	1	0	2	71	0	0

Age of Respondents



Intercept	0	0	2	0	7	2	1	0
Staff	0	1	3	4	2	0	0	0
Paper	1	0	0	4	4	4	3	0
Web	0	3	12	13	21	16	10	0

