

10. Any other comments or ideas that you would like to share?

Source	Comments
	1. Bike racks - cool outdoor theme
	2. Walking/bike suspension bridge across river
Paper	3. Hiker /biker campsite, on-line registration, information on local supplies, keypad for bathroom
Paper	Amazing park with a lot of potential
Staff	As specified above, the lake side would benefit from a shelter(s) just past the boat ramp. If the shelters included a boat dock these would be rented for high dollar amounts. I believe they would stay full during the in season. It could also serve as a good spot for paddling events on weeknight evenings.
Staff	Bathrooms desperately need updated.
Staff	Eastwood is a great park
Staff	I wish I could go from the lake over to the other side of the park. I am in Eastwood all the time and love the opportunities but I wish I didn't have to go out to Harshman Rd., that keeps me from using Eastwood as much as I'd like or meeting friends to spend the day paddling all the different options. I'd love to be able to keep my kayak and SUP at the park if you had lockers.
Staff	It's a crying shame that the trees along the backside of the lake were removed. Why would someone want to cast their gaze across a lake to view a highway. The reminder of the built environment is already sufficiently painful whilst entering off the busy Harshman Rd.
Staff	Love the fact that it's a short drive to fish and boat!
Staff	Make the Lake idle speed only for fishing and Kayaker all the time
Staff	We love this park and think the addition of a dog space would be ideal.
Web	A connection of the bike path over the mad river to the lake. I don't know if it was just the construction preventing that
	A designated group camp site would be great with permanent fire pits.
	I really think a slackline park with rental opportunities could be a money maker.
Web	I don't know if it falls under park amenity but a bridge connecting the two sides just for pedestrians and cyclists would be an improvement.
Web	Beautiful park, Thank you!!
Web	Better access for those to dispose of animal waste. It has become a huge obstacle for a nice family walk.
Web	build a bridge over the mad river near the whitewater feature and add a cyclocross course on lakeside and parkside utilizing those bridges and the Harshman Rd Bridge
Web	Build an elevated observation platform close to the front entrance to watch the nesting Eagles across the road in the well field.That nesting pair has been there 7 years returning to the same nest every year. The elevated platform needs to be higher than Harshman rd. To see over the traffic. Thanks Jim Wilson
Web	Clearer river access and parking
Web	Dog park
Web	Doggie water fountain/bowl
	Eastwood is a big gorgeous piece of property - but really one has a small "hiking" trail. While the main bike path and road access is pretty - I wonder if a large perimeter loop off paved surface hiking trail could be incorporated.
	Also - unsure of how difficult this would be, but can the lake side of the part be connected to the rest of the park somehow? A foot suspension bridge or stepping rocks over the mad river?
	eastwood is sort of an urban park - are their best practice models of backcountry overnight camping sites within parks like eastwood? I know I would really enjoy reserving a spot at a site like this at eastwood because it is so much closer to my home than twin creek or germantown and would allow me to bring my young children too easier.
Web	can't have it all I understand, but it is exciting to think about these and other options!
Web	Eastwood is a great park, but I feel it's been neglected. I would like to see more flower areas and either park ranger or poilice presence to keep the kids safe and drug deals down.
Web	Glad to see the surveys...now that I'm physically unable to walk the trails, the appearance of natural beauty right next to the parking lot is important to me. Many benches for resting is also good.
Web	Graffiti becoming noticeable along bike path south of park.
Web	I adore Eastwood park. It has never looked better. Trees and the lagoon make me happy. I hope your master plan does not do something dumb, like put in a manicured golfing area.
Web	I am a member of the Greater Dayton Rowing Association and I would love to see Eastwood used for regattas and recreational rowing. It's a beautiful stretch of river and lake that can be put to use and bring in more traffic and park visitors.
Web	I generally bring mentally challenged clients and they just like to cook out and everything is great.
Web	I hope that one day i will be employed by FRMP. I have a desire to help keep out parks clean. My ideal job would be to just to go around picking up all the trash and litter, especially in the inconvenient areas. After hiking the A.T. it made me want to do my part with LNT, even for other people.
	I like the way that Eastwood has areas for playgrounds, launching kayaks, and bicycling while still maintaining large green-space areas used for wild flowers, trails, and having trees around water features.
Web	Our vintage base ball team enjoys using this as a home park, and visitors from other communities (including out of state) have remarked how much they've enjoyed fishing and seeing other quieter activities.
Web	I like to cross country ski there
	I monitor the Bald Eagle activity daily. They have fledged 13 eaglets in the last 6 years and are just now beginning to work on preparing the nest for the 2017 season. Many people ask me where they can best view the nest which is 1/2 mile E/SE of the lake. Since this is our first nesting pair of eagles in Dayton since 1938 there is quite an interest in them. Could a sign be erected in the park near the east end of Eastwood Lake, along Harshman Road, with an arrow pointing to the nest?
Web	Will the new roadway bridge on Harshman have a bike/pedestrian path on it?
Web	I think if you add play areas for kids, it should be the nature play areas with sticks and rocks and stuff like some of the other parks have. Kids could really use that type of thing, I think.
Web	I wish there were less fowl feces but it's difficult to stop people from contributing to that by feeding the geese/ducks.
Web	I wish you would allow access from the Springfield Street entrance all the way through the Harshman Road entrance.
Web	I would enjoy rowing on Eastwood Lake
Web	I would like there to be more park security officers circling through the park at regular intervals. Sometimes I am a little worried about my safety. For example, I wouldn't feel safe walking or biking through the park by myself.

	I would like to an Obstacle Course. It could features a quarter-mile running track plus a tire run and flip, 8-foot wall, tunnel crawl, balance beams, monkey bars, cargo climb, belly crawl, over/under, a log run, etc. The hills are awesome to run and an Obstacle Course would be a great addition.
Web	If there is a way to connect the Englewood bike path to Vandalia or the Shoup Mill trail head it be great. With all the distracted drivers these days texting while driving riding the streets is becoming unsafe
Web	I would like to see the metroparks install an outdoor climbing wall similar to the one at the Columbus Audubon.
Web	In preparation for an Appalachian Trail trip, I wanted to do a portion of the Buckeye Trail. In our area, there are no available campsites for backpackers. I'm not advocating a campground, just 3-4 sites for those doing the Buckeye Trail. The Buckeye Trail will never be viable if hikers have to go 5 miles away to a motel.
Web	It has a lot of rowing potential. The Royal Henley course in England is 80ft wide, no lanes. marked on the perimeter only. It would be really cool if you could do a straight Henley style (head to head elimination sprint) race at that weird distance 2112m (Henley distance) diagonally across the lake. If not that, I bet you could get 2k (standard sprint) diagonal. That would be a really unique event around here I think and would get a lot of attention throughout the region. Probably need to be a two day event. Can't race more than twice a day, so a 16 boat event would race Sat morning, Sat afternoon, Sun morning, and Sun afternoon. It is a standing start from platforms. You would need some run out room after the finish to get slowed down and turn. There is nothing like that anywhere around here, so I think that would be better than just another race.
Web	It would be absolutely great to see the return of a disc golf course.
Web	It would be great if the beautiful bridges to the islands in the lagoon would connect somewhere to make a closed loop walk possible. Ideally, from the last island to the bikeway side. This would open the area up and make longer (and very pretty) walks possible.
Web	it would be great to have shared space for boat and equipment storage.
Web	Love this park! I would love to see more info about what happens there. Maybe more on facebook or in DDN, or even a sign at each entrance.
Web	Make the lagoon islands a permanent dog park, add walking trail around lake, connect both sides of park with bridge, add camping for buckeye trail and bike paths.
Web	Maybe some benches along the river to watch the ducks.
Web	na
Web	None
Web	none
Web	none at this time
Web	not at this time
Web	Offer bike or canoe rentals. Like riverscape.
Web	Open both entrances to the park.
Web	Promote fishing. Also stock with fish. Make sure water is pollution free.
Web	Thank you for listening to the community on wants and needs. We love the abundance of parks in Dayton and are happy to see such care going to planning for the future.
Web	Thank you for providing a great place to hike and exercise. I am a geocacher and love going to all the metroparks in the area
Web	The cleanliness of the smaller waterways at the west side of the park is quite discouraging.
Web	The lake needs to be dredged so it is deeper and it would be nice if you could stock the lagoon.
Web	The river access point creation by the park entrance was a great start, now if it would be allowed to drive under the bridge to just drop off kayak and gear (not parking) that would be great. If alone it can be a chore to take kayak, gear, fishing rods, etc from parking area to river.
Web	This is where I caught my first fish ever while fishing with my husband, nice Bass and since then he has passed away of cancer, this is a memory I will forever hold as a treasure in my heart, never heard of this park till he took me there. By the way, it is a very beautiful park.
Web	turn the lake into an RV park.....great revenue opportunity
Web	We held a learn to row there over the summer. Great venue
Web	We love the festivals and activities that get offered there, miss mountain days!
Web	We wish the park opened at 6 am in the summer so we could get out before the heat, it is too hard on us and our dogs to walk when it's hot. The people riding bikes all get to go thru the park early on the bike trails so why can't the rest of us walk in there?
Web	Woods could do with thinning in areas to promote native trees, more woodland wildflowers need planted for the shady areas.
Web	Would love to see a disc golf course back at eastwood

7. What do you like most about Eastwood?

Source	Comments
Intercept	Close to home
	Hiking
Intercept	Outdoor events
Intercept	Trails
Paper	Bike and hiking trail access
Paper	Bike trail, kayaking
Paper	It's potential for a great rowing venue for both rowers and spectators
Staff	Access to Bikeways and river and then the lake
Staff	bikeway access
Staff	It has a lot of beautiful spaces along the river and lagoon. The lake is great to have for boating. I like to kayak on the lake but spend most of my time on the other side of the park. I like the tranquility of the bridges over the lagoon and the openness to the park.
Staff	It's a nice park close to down town and easy to access around Dayton. The trails aren't as great as other parks, and there aren't many, but it's a large park with lots of beautiful natural features.
Staff	It's the only place available for motor boats in Montgomery County.
Staff	lagoon, Buckeye Trail by river, wildlife
Staff	Open, playground, river, trails
Staff	Riding my bike through the park, Fishing in the river or paddling in the lagoon.
Staff	Sprawling open spaces, mature trees and clean understory.
Staff	the bikeways!
Staff	the diversity of visitors
Staff	The lagoons and lake.
Staff	The Lake for birding or relaxing during times the lake isn't busy. We sometimes walk the lagoon area birding. We also have an annual family reunion at one of the shelters.
Staff	The lake for kayaking
Staff	The openness, the islands connected by bridges, the bikeway for easy walking.
Staff	The River walk
Staff	The water features
Staff	variety of activities and features - river, lake
Staff	Water feature
Staff	water features, bike tails

Web	A good staging area for visiting the huffman dam area or biking onward toward either beavercreek or kettering
Web	Access to bikeway, walk along the river
Web	Access to the bike path. The lakes!
Web	access to the river, lake play, lagoon paddling.
Web	All of the access to the various waters (river, lake, etc) and the beautiful route of the bike path.
Web	Beautiful area - well marked trails
Web	Beautiful, close to home, bike path
Web	Bike path
Web	Bike path, lagoon, lake, close to downtown. You guys do a great job keeping it clean.
Web	Bike trails and hiking paths
Web	bikeway, river, skiing
Web	Biking
Web	Bird watching (use scope)
Web	Buckeye trail; wildlife
Web	Changing stations/bathrooms near the Mad River put-in
Web	Close to dwntwn, where I work. Ride through on my bicycle. Hike around the grounds. Like the newest multi-use trail to Huffman.
Web	Close to home
Web	close to where we live and large trees and walking/hiking areas. the park is clean and feels safe. i wish it opened earlier in the summer because of the heat we like to get out early.
Web	Close, water
Web	Connection to water, long sweeping landscapes, green in the city. So many ways to play! Connections to bike paths.
Web	Convenient lake close to home.
Web	diverse amentities
	ease of access near bike paths headed different directions
	the large mature trees, sycamores.
Web	the river access
Web	easy access on bikeway
	Easy access to nature and serenity. I can go from working at a downtown Dayton hospital to being in nature to kayak in a few minutes. I can get in a great workout before or after work or even lunchtime. This is huge for quality of life!!!! This is why I live in DAYTON instead of Los Angles!!
Web	Easy to get there on bike trail. Annual Outdoor Adventure event.
Web	Everything, it's one of the most unique of all the Metroparks.
Web	Fishing
Web	Free fishing
Web	Great for picnics and biking.
Web	Great park. Connect both sides together for parking, open bridge. Build a walkway over river to huffman lake.
Web	Home of the Midwest Outdoor Experience.
Web	I enjoy walking along the river and the pond. I take my children and grandchildren to play at the play ground.
Web	I like it because it closer to my home.
Web	I like photography and find lots of interesting shots around the water.
Web	I like that it is a place with a peaceful view that includes nature, the sunset over the water and even a view of downtown Dayton.
Web	I like the biking trail and the Great Outdoor Expo
Web	I like the fishing opportunities for my son. It is a relaxing park to visit.
Web	I like the lake and the running/biking trail. I also like that there is a bathroom facility even though I usually don't use it because it's probably not that clean.
Web	I like the variety of features - open and tree-canopy, water and land - as well as the bridges.
Web	I like the water experience and the rustic shelter houses, the picnic areas
Web	I love the bridges and seeing the ducks. I'm less than impressed with the play area and cleanliness.
Web	I love the Midwest Outdoor Experience.
Web	It exists
Web	It has a little everything, water, trails, shelters. There are always diffrent activities there through the year and the lake is beautiful!
Web	It is visually beautiful place with a lot of different things to do. There is also a lot of wildlife to see.
Web	It's close to me! Walking the path across from the base is fun, lots of path options
Web	It's close we like to look for wildlife
Web	It's close, it's kept clean, I like the bridge and the water.
Web	It's connection to the Buckey Trail
Web	It's quiet and peaceful. It's right on the bike path. a good resting place, when on a bike trip from Riverscape to Wright Patt.
Web	Just walking around the park near the River.
Web	lake, atmosphere
Web	Large green space, bike trails, shelters, lakes, and events.
Web	large trees
Web	Lots of area to walk the dog
Web	love the hiking, birding, the accessibility
Web	My husband and I enjoy the whitewater feature. The kids love the playground. We also like the trail from the water feature along the river.
Web	Nike path
Web	nothing
Web	outdoor x baby!
Web	OutdoorX!
Web	Paved paths, proximity to water, wildlife
Web	Picnic area, my clients just enjoy cooking out.
Web	Picnic shelters
Web	picturesque bridge; able to see a lot without walking too far; has shelters
Web	Playground, bridges, trails
Web	Potential.
Web	Riverside access
Web	rowing
Web	Rowing potential
Web	rowing. In shells.
Web	safe envirnoment and of course the bike path
Web	Scenery.
Web	Seeing waterfowl, and the bald eagles occasionally. Also I like to watch the kayakers playing in the Mad river.
Web	Senery, water and arched bridge walkways

EASTWOOD METROPARK



CIRCULATION KEY

- Vehicular Circulation
- Paved Multi-Use Trail
- Nature Trail
- Buckeye Trail
- Mad River Bikeway
- Vehicular Bridge
- Lagoon Bridge
- ADA Fishing Pier
- Mitigated Lake Edge
- Existing Train Tracks
- Prairie
- Beach Put-In
- Nature Play
- Adult Boulder Course
- Parking Lot
- Main Entry Signage
- Well Head
- Trail Head
- 1st Decision Point Designation

FACILITIES KEY

- Boathouse & Storage
- Maintenance Building
- 3 Season Shelter/Restroom/Concession
- Drive Through Building & Outdoor Storage
- Restroom Building
- Shelter/Storage Building
- Lean-To Shelter
- Exercise Node
- Canoe Storage
- Cleanout Station
- Bike Parking (*) = Changing Station
- Back Country Camping
- Picnic Area

WATER ACCESS KEY

- ADA Fishing Dock
- Power Boat Ramp
- Paddle Put-In
- Observation/Overlook



CONCEPTUAL SITE PLAN | 11.17.17



landscape architecture | planning | urban design

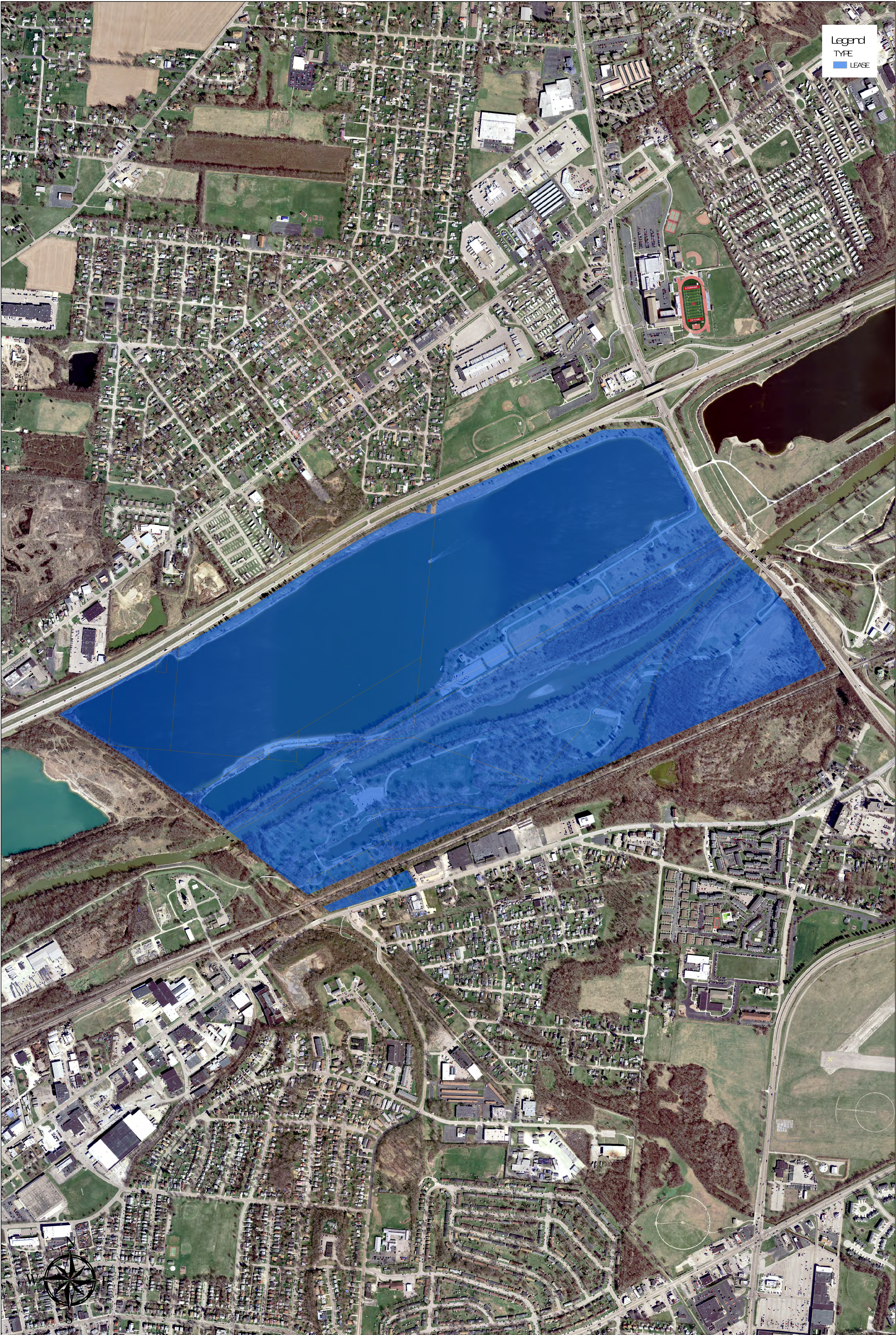


EASTWOOD METROPARK

437 acres

Eastwood MetroPark contains beautiful shady picnic areas, a winding shaded lagoon, a 185 acre recreational lake, riparian forest habitat along the Mad River, successional areas, and a few grasslands. These grassland openings are former prairies that retain the rich prairie soil and lend themselves to prairie restoration. In addition to its recreational uses, Eastwood Lake is well known for its migratory bird populations, including waterfowl, osprey, shorebirds, and gulls.

1. To protect the existing mature woodlands including control of honeysuckle and other invasive species in designated areas, particularly the riparian forest land along the Mad River.
2. To permit natural succession to occur in designated old fields and young forests to generate new mature forests minimize edge effects within large tracts.
3. To maintain sufficient edge/thicket habitat, a transitional habitat important to many types of wildlife. Reintroduction of native shrubs in designated areas to promote re-establishment of these species.
4. To manage the existing lagoons and Lake to promote fish and wildlife populations as well as appropriate recreational uses.
5. To restore and maintain selected areas to native prairie habitat.
6. To design and maintain hiking trails to maximize the experience of the user and integrity of the managed habitats.



Legend
TYPE
LEASE

Eastwood Metro Park

Date Exported 8/3/2018 8:09 AM

Path X:\GIS_Server_2018\District_Projects\Planning\Bases\Map\Parcel_Map.aprx

Scale 1:5,000

0 250 500 1,000 1,500 2,000 Feet

FIVE RIVERS METROPARKS
Property acquired 1/1/01-9/12/03

PROPERTY	PARCEL ID	DATE	ACRES		LOCATION	TYPE	PRICE	GRANTS	FRMPS	GRANT	DOCUMENTS
City of Dayton	R72 05014 0018	4/1/92	437.00	2.7400	Eastwood Park	LEASE	\$ -	\$ -	\$0.00		EASTWOOD MPEAMP03261990
City of Dayton	R72 05014 0009	4/1/92	437.00	10.5000	Eastwood Park	LEASE	\$ -	\$ -	\$0.00		EASTWOOD MPEAMP03261990
City of Dayton	R72 05017 0018	4/1/92	437.00		Eastwood Park	LEASE	\$ -	\$ -	\$0.00		EASTWOOD MPEAMP03261990
City of Dayton	R72 05011 0011	4/1/92	437.00	154.0000	Eastwood Park	LEASE	\$ -	\$ -	\$0.00		EASTWOOD MPEAMP03261990
City of Dayton	R72 05011 0015	4/1/92	437.00	83.8720	Eastwood Park	LEASE	\$ -	\$ -	\$0.00		EASTWOOD MPEAMP03261990
City of Dayton	I39 00719 0083	4/1/92	437.00	0.3440	Eastwood Park	LEASE	\$ -	\$ -	\$0.00		EASTWOOD MPEAMP03261990
City of Dayton	R72 05011 0026	4/1/92	437.00		Eastwood Park	LEASE	\$ -	\$ -	\$0.00		EASTWOOD MPEAMP03261990
City of Dayton	R72 05011 0012	4/1/92	437.00	10.2600	Eastwood Park	LEASE	\$ -	\$ -	\$0.00		EASTWOOD MPEAMP03261990
City of Dayton	R72 05011 0013	4/1/92	437.00	1.2000	Eastwood Park	LEASE	\$ -	\$ -	\$0.00		EASTWOOD MPEAMP03261990
City of Dayton	R72 05011 0014	4/1/92	437.00	0.6900	Eastwood Park	LEASE	\$ -	\$ -	\$0.00		EASTWOOD MPEAMP03261990
City of Dayton	R72 05011 0016	4/1/92	437.00	57.4270	Eastwood Park	LEASE	\$ -	\$ -	\$0.00		EASTWOOD MPEAMP03261990
City of Dayton	R72 05011 0025	4/1/92	437.00	3.7800	Eastwood Park	LEASE	\$ -	\$ -	\$0.00		EASTWOOD MPEAMP03261990
City of Dayton	R72 05011 0010	4/1/92	437.00	1.5800	Eastwood Park	LEASE	\$ -	\$ -	\$0.00		EASTWOOD MPEAMP03261990
City of Dayton	R72 05011 0009	4/1/92	437.00	0.0500	Eastwood Park	LEASE	\$ -	\$ -	\$0.00		EASTWOOD MPEAMP03261990
City of Dayton	R72 05011 0006	4/1/92	437.00	9.0150	Eastwood Park	LEASE	\$ -	\$ -	\$0.00		EASTWOOD MPEAMP03261990
City of Dayton	R72 05014 0005	4/1/92	437.00	7.0900	Eastwood Park	LEASE	\$ -	\$ -	\$0.00		EASTWOOD MPEAMP03261990
City of Dayton	R72 05014 0004	4/1/92	437.00	1.0100	Eastwood Park	LEASE	\$ -	\$ -	\$0.00		EASTWOOD MPEAMP03261990
City of Dayton	R72 05011 0007	4/1/92	437.00	3.6500	Eastwood Park	LEASE	\$ -	\$ -	\$0.00		EASTWOOD MPEAMP03261990
City of Dayton	R72 05011 0008	4/1/92	437.00	1.4700	Eastwood Park	LEASE	\$ -	\$ -	\$0.00		EASTWOOD MPEAMP03261990
City of Dayton	R72 04912 0004	4/1/92	437.00	56.5000	Eastwood Park	LEASE	\$ -	\$ -	\$0.00		EASTWOOD MPEAMP03261990
City of Dayton	R72 05011 0017	4/1/92	437.00		Eastwood Park	LEASE	\$ -	\$ -	\$0.00		EASTWOOD MPEAMP03261990
City of Dayton	R72 05011 0018	4/1/92	437.00	45.5660	Eastwood Park	LEASE	\$ -	\$ -	\$0.00		EASTWOOD MPEAMP03261990
City of Dayton	R72 05011 0021	4/1/92	437.00	2.0000	Eastwood Park	LEASE	\$ -	\$ -	\$0.00		EASTWOOD MPEAMP03261990
City of Dayton	R72 05011 0022	4/1/92	437.00	10.6000	Eastwood Park	LEASE	\$ -	\$ -	\$0.00		EASTWOOD MPEAMP03261990
City of Dayton	R72 05011 0024	4/1/92	437.00	0.1400	Eastwood Park	LEASE	\$ -	\$ -	\$0.00		EASTWOOD MPEAMP03261990
City of Dayton	R72 04912 0005	4/1/92	437.00	2.3710	Eastwood Park	LEASE	\$ -	\$ -	\$0.00		EASTWOOD MPEAMP03261990
City of Dayton	R72 04912 0006	4/1/92	437.00	2.1340	Eastwood Park	LEASE	\$ -	\$ -	\$0.00		EASTWOOD MPEAMP03261990
City of Dayton	R72 04912 0007	4/1/92	437.00	2.5100	Eastwood Park	LEASE	\$ -	\$ -	\$0.00		EASTWOOD MPEAMP03261990
City of Dayton	R72 04912 0008	4/1/92	437.00	2.5100	Eastwood Park	LEASE	\$ -	\$ -	\$0.00		EASTWOOD MPEAMP03261990
City of Dayton	R72 04912 0009	4/1/92	437.00		Eastwood Park	LEASE	\$ -	\$ -	\$0.00		EASTWOOD MPEAMP03261990
City of Dayton	R72 04912 0010	4/1/92	437.00		Eastwood Park	LEASE	\$ -	\$ -	\$0.00		EASTWOOD MPEAMP03261990
City of Dayton	R72 04912 0011	4/1/92	437.00		Eastwood Park	LEASE	\$ -	\$ -	\$0.00		EASTWOOD MPEAMP03261990
City of Dayton	R72 04912 0012	4/1/92	437.00		Eastwood Park	LEASE	\$ -	\$ -	\$0.00		EASTWOOD MPEAMP03261990
City of Dayton	R72 04912 0013	4/1/92	437.00		Eastwood Park	LEASE	\$ -	\$ -	\$0.00		EASTWOOD MPEAMP03261990
City of Dayton	R72 04912 0014	4/1/92	437.00		Eastwood Park	LEASE	\$ -	\$ -	\$0.00		EASTWOOD MPEAMP03261990

Eastwood MetroPark Site-plan Interpretive Summary

(placeholder link to full interpretive plan)

Overview

- 437 acres located on City of Dayton Wellfields in east Dayton.
- Habitats– **Water:** a majority, >55%, of the park acreage is water. Mad River in middle feeds a man-made lagoon in south section and Eastwood Lake a 1-mile long, 185- acres, in north section; it is the largest lake in Montgomery County.
Forest: Much of the area around the lagoon is forested with an open understory providing for shady trail opportunities.
Prairie: Planted prairies near the main entrance of the park are a thriving restoration area. Opportunities for limited foot access in coordination with conservation.
- Historical – Open space for community since 1940's. Five Rivers MetroParks began leasing the property in 1990 from the City of Dayton. In 1992, lease extended to include Eastwood Lake parcel.
- Situated at the wellfields there is a unique opportunity to collaborate with the City of Dayton Department of Water to create awareness that Dayton's drinking water comes from an aquifer.
- Comprehensive master plan park typology classified as an Urban Community Park.

Audience

Current audiences:

Experience Seekers
Explorers

Potential audiences:

Facilitators
Rechargers

Current User Groups:

Cycling
Walking/Running
Picnicking/ shelter gathering use
Bird Watching
Fishing
Boating: PWC riding, Motorboats, Sailboats
Paddling: Kayak, Canoe, or SUP boards
Mad River Run Destination
Hiking: buckeye or short lagoon loop trail
Special events (site of Midwest Outdoor Experience, runs/walks for charity)

Potential User Groups/Activities:

Hub to commute to Downtown Dayton
Pull city center workers and residents for lunch breaks/ post work recreation
Bike/kayak river use combinations to RiverScape
Outdoor fitness
Heart Healthy walkers
Families shared learning
At nature play site
Facilitators – learn about the water cycle in a fun family friendly way

Intended Visitor Experience:

Visitor experience provided for all visitor types and activities:

- Landscaping, basic amenities, and wayfinding provide a sense of comfort and safety while offering solitude in nature when participating in a range of activities from passive to high adrenaline activities.
- In peak use, visitors can choose to socialize or enjoy nature in small groups without feeling crowded.
- Visitors stay for at least an hour and up to 4 or 5 hours for some activities.
- Visitors are immersed in nature near downtown.

What makes this park special? Several recreation activities close to downtown but surrounded by woods, lakes, or river in most areas of the park. Appears it is the largest public greenspace with recreation within the City of Dayton. It is the only FRMP facility over Dayton's aquifer.

Neighborhood Population Information

- Residential area surrounding the park is growing +6.3% 2000 to 2014.
- Dayton Metro population 141,000 residents – within a few miles of parks west entrances.
- Dayton city center (45402 zip code) grew 350% from 2000 to 2010 from 3,275 to 11,420.
- Dayton daytime population increases 25.4% with commuters coming downtown for work.

See full interpretive plan for details. Sources: <http://www.city-data.com>

Themes/ storylines

Core -Themes: Parks make our lives healthier and happier. & A unique adventure awaits.

Interpretive Theme for site: Eastwood MetroPark conservation efforts protect fresh water for our community, fresh air to breath and variety of outdoor adventures for a healthy active you.

Sub-themes:

Time outside to walk, run, or boat is healthy for our body and mind.

Eastwood MetroPark provides healthy ecosystem services and protects our city water.

Storylines specific to site:

- A short bike ride from city center, Eastwood provides a place to meander through the woods, let your mind relax and recharge while enjoying recreational activities in nature.
- FRMP habitat and clean waterways conservation efforts created nesting grounds for Bald Eagles at Eastwood MetroPark after a 70-year absence in the Dayton region.
- There is an aquifer under your feet. Eastwood MetroPark serves as open space and filters water, for healthy high quality drinking water for the Dayton Community.

Other opportunities to connect to agency-wide Themes:

Partnerships create healthy and vibrant communities.

Active conservation efforts protect lands for future generations.

Partnership opportunities:

Health Care Organizations or Hospitals for the fitness stations

Universities and Paddlesport companies

Interpretive Media Recommendations: (**optional with partner funding*)

Personal programs by topic

- Self-propelled water sports: Kayaking, SUP
- Bird watching
- Fitness: Cycling, yoga, walking, running, etc.
 - Rock climbing (*if wall installed in adult nature play area*)

Wayside self-guided

- Wayside /Exhibit near large designed nature play.
 - Opportunity to incorporate water cycle concepts in nature play.

Opportunities for Wayside exhibits

- Viewing scopes and other interpretive media for bird watching at observation points (or new decks).*
- Exhibit on Water cycle/ how an aquifer works in a quasi-captive audience area.*
 - Incorporate in design of new open-air pavilion?
- Trail/interpretive signs*: around East Lake, Blue Lake, Mad River corridor, habitat preservation areas, Buckeye Trail, wetlands, and lagoons.
- Artwork in parking areas that connects public to groundwater supply concepts.*
- Media to connecting fitness station users to nature, and nature walkers to fitness stations.*