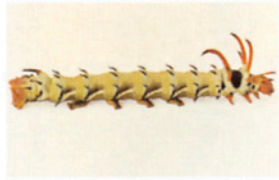


# COMMON CATERPILLARS OF OHIO



◀ **Larva:** Hickory Horned Devil  
**Adult:** Royal Walnut Moth/Regal Moth  
**Larval food:** Hickory, walnut, pecan, ash, lilac, persimmon, sycamore, sweetgum.  
**Larval size:** to 6 inches



◀ **Larva/Adult:** Zebra Swallowtail  
**Larval food:** Pawpaw.  
**Larval size:** to 2 inches



◀ **Larva/Adult:** Leopard Moth  
**Larval food:** Plantains, dandelions, violets, honeysuckle, maple, willow, banana leaves.  
**Larval size:** to 3 inches



◀ **Larva/Adult:** Tiger Swallowtail  
**Larval food:** Willow, cherry, tulip, poplar, basswood, birch.  
**Larval size:** to 2 inches

▶ **Larva/Adult:** Orange Sulphur  
**Larval food:** Alfalfa, vetches, clover, members of bean family.  
**Larval size:** to 1 inch



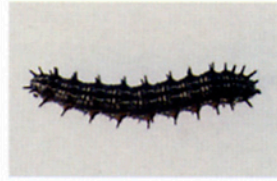
▶ **Larva:** "Little Dragon"  
**Adult:** Viceroy  
**Larval food:** Willow, poplar, cottonwoods, some fruit trees.  
**Larval size:** to 1.25 inches



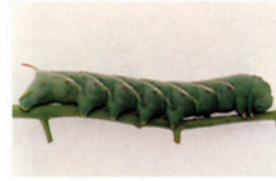
▶ **Larva/Adult:** Painted Lady  
**Larval food:** Thistles, other composites, hollyhocks, borages.  
**Larval size:** to 1.5 inches



▶ **Larva/Adult:** Buckeye  
**Larval food:** Plantains, snapdragon, stonecrop, toadflax, loosestrife.  
**Larval size:** to 1.25 inches



◀ **Larva/Adult:** Eastern Black Swallowtail  
**Larval food:** Members of carrot and citrus family.  
**Larval size:** to 2 inches



◀ **Larva:** Tomato/Tobacco Hornworm  
**Adult:** Carolina Sphinx Moth  
**Larval food:** Tomato and tobacco leaves.  
**Larval size:** to 6 inches

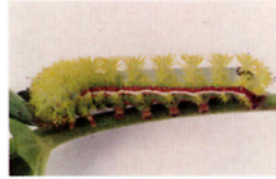


◀ **Larva/Adult:** Pearl Crescent  
**Larval food:** Aster family, Echinacea (Cone Flower)  
**Larval size:** to .75 inches



◀ **Larva/Adult:** Spicebush Swallowtail  
**Larval food:** Spicebush, sassafras, bay, and others of laurel family.  
**Larval size:** to 1.5 inches

▶ **Larva/Adult:** IO Moth  
**Larval food:** Alder, ash, birch, cherry, elm, locust, oak, sassafras.  
**Larval size:** to 3 inches



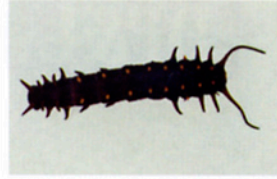
▶ **Larva/Adult:** Monarch  
**Larval food:** Milkweed family.  
**Larval size:** to 2.75 inches



▶ **Larva/Adult:** American Painted Lady  
**Larval food:** Daisy family.  
**Larval size:** to 1.25 inches



▶ **Larva/Adult:** Pipevine Swallowtail  
**Larval food:** Pipevines.  
**Larval size:** to 2 inches



◀ **Larva/Adult:** Luna Moth  
**Larval food:** Many broad-leaved trees including sweetgum, birch, alder.  
**Larval size:** to 2.75 inches



◀ **Larva/Adult:** Great Spangled Fritillary  
**Larval food:** Violet family.  
**Larval size:** to 1.75 inches



◀ **Larva/Adult:** Giant Swallowtail  
**Larval food:** Citrus plants, prickly ash, hop tree.  
**Larval size:** to 2.5 inches

*Photos courtesy of Norma Cser.*