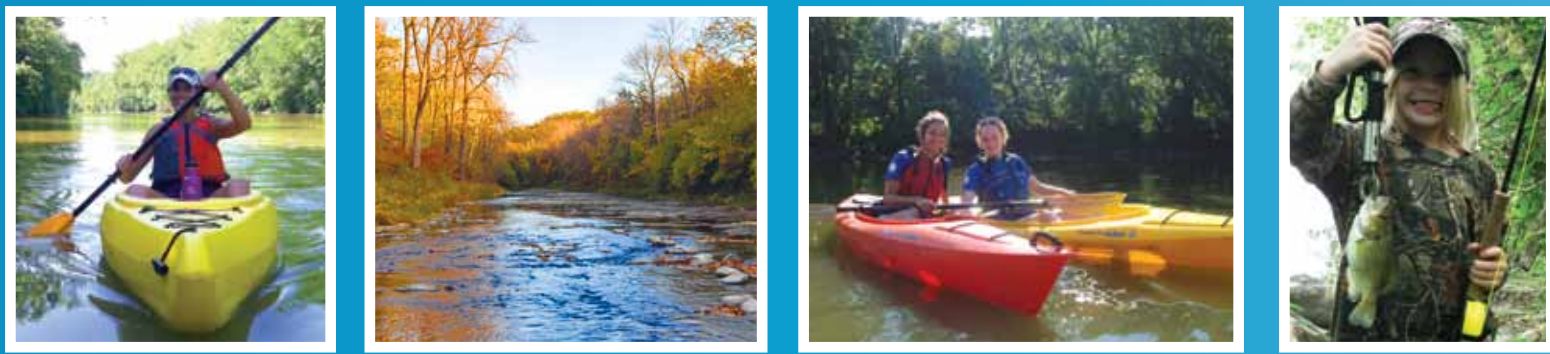
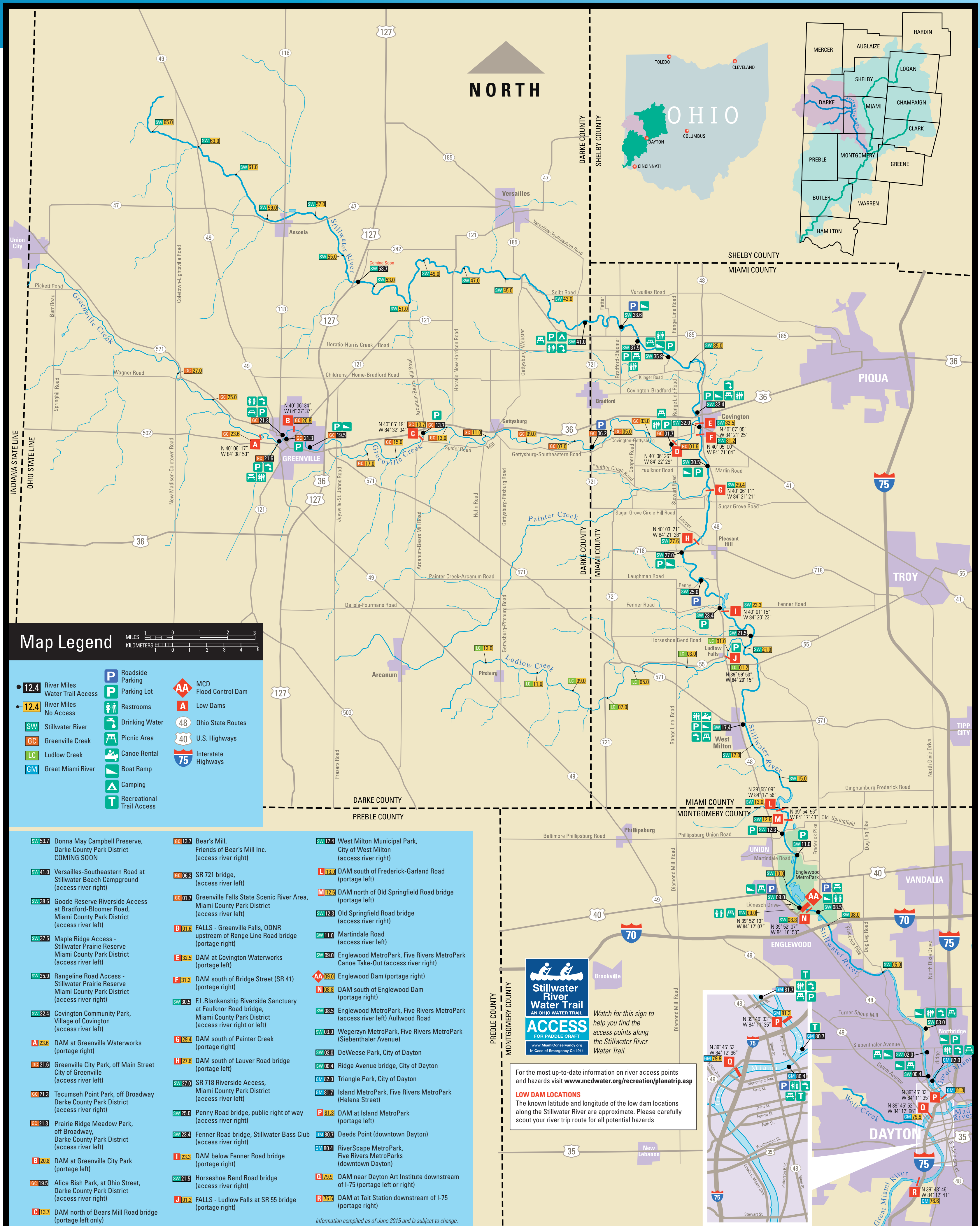


# Stillwater River Water Trail



Our rivers and streams offer wonderful opportunities for recreation, from kayaking and canoeing to fishing and wildlife watching. But it's important to learn how to enjoy them safely. Review the information on the reverse side to make sure your next outing on the Stillwater River Water Trail is a safe and fun adventure.



## Map Legend

- |                                     |                           |                       |
|-------------------------------------|---------------------------|-----------------------|
| Miles 0 1 2 3<br>Kilometers 0 1 2 3 | Roadside Parking          | MCD Flood Control Dam |
| River Miles Water Trail Access      | Parking Lot               | Low Dams              |
| River Miles No Access               | Restrooms                 | Ohio State Routes     |
| Stillwater River                    | Drinking Water            | U.S. Highways         |
| Greenville Creek                    | Picnic Area               | Interstate Highways   |
| Ludlow Creek                        | Canoe Rental              |                       |
| Great Miami River                   | Boat Ramp                 |                       |
|                                     | Camping                   |                       |
|                                     | Recreational Trail Access |                       |

- |   |   |  |
|---|---|--|
| Donna May Campbell Preserve, Darke County Park District <b>COMING SOON</b>                              | Bear's Mill, Friends of Bear's Mill Inc. (access river right)   | West Milton Municipal Park, City of West Milton (access river right)           |
| Versailles-Southeastern Road at Stillwater Beach Campground (access river right)                        | SR 721 bridge, (access river left)  | DAM south of Frederick-Garland Road (portage left)                             |
| Goode Reserve Riverside Access at Bradford-Bloomer Road, Miami County Park District (access river left) | Greenville Falls State Scenic River Area, Miami County Park District (access river left)                              | DAM north of Old Springfield Road bridge (portage left)                        |
| Maple Ridge Access - Stillwater Prairie Reserve Miami County Park District (access river left)          | FALLS - Greenville Falls, ODNR upstream of Range Line Road bridge (portage right)                                     | Old Springfield Road bridge (access river right)                               |
| Rangeline Road Access - Stillwater Prairie Reserve Miami County Park District (access river right)      | DAM at Covington Waterworks (portage left)  | Martindale Road (access river left)  |
| Covington Community Park, Village of Covington (access river left)                                      | DAM south of Bridge Street (SR 41) (portage right)  | Englewood MetroPark, Five Rivers MetroPark Canoe Take-Out (access river right) |
| DAM at Greenville Waterworks (portage right)  | F.L. Blankenship Riverside Sanctuary at Faulkner Road bridge, Miami County Park District (access river right or left) | Englewood Dam (portage right)  |
| Greenville City Park, off Main Street City of Greenville (access river left)                            | DAM south of Painter Creek (portage right)  | DAM south of Englewood Dam (portage right)                                     |
| Tecumseh Point Park, off Broadway Darke County Park District (access river right)                       | DAM south of Lauver Road bridge (portage left)  | Englewood MetroPark, Five Rivers MetroPark (access river left) Aullwood Road   |
| Prairie Ridge Meadow Park, off Broadway, Darke County Park District (access river left)                 | SR 718 Riverside Access, Miami County Park District (access river left)   | Wegerzyn MetroPark, Five Rivers MetroPark (Siebenthaler Avenue)                |
| Alice Bish Park, at Ohio Street, Darke County Park District (access river right)                        | Penny Road bridge, public right of way (access river right)   | DeWeese Park, City of Dayton   |
| DAM north of Bears Mill Road bridge (portage left only)   | Fenner Road bridge, Stillwater Bass Club (access river right)   | Triangle Park, City of Dayton  |
|   | DAM below Fenner Road bridge (portage right)  | Island MetroPark, Five Rivers MetroPark (Helena Street)                        |
|   | Horseshoe Bend Road bridge (access river right)   | DAM at Island MetroPark (portage left)   |
|   | FALLS - Ludlow Falls at SR 55 bridge (portage right)  | Deeds Point (downtown Dayton)  |
|   |   | RiverScape MetroPark, Five Rivers MetroParks (downtown Dayton)                 |
|   |   | DAM near Dayton Art Institute downstream of I-75 (portage left or right)       |
|   |   | DAM at Tait Station downstream of I-75 (portage right)                         |

Information compiled as of June 2015 and is subject to change.



Watch for this sign to help you find the access points along the Stillwater River Water Trail.

For the most up-to-date information on river access points and hazards visit [www.mcdwater.org/recreation/planatrip.asp](http://www.mcdwater.org/recreation/planatrip.asp)

**LOW DAM LOCATIONS**  
The known latitude and longitude of the low dam locations along the Stillwater River are approximate. Please carefully scout your river trip route for all potential hazards

