

TWIN CREEK & GERMANTOWN METROPARKS



PRIMARY & SECONDARY HUBS

A. Outdoor Education & Recreation Center



- Park Gateway (secondary)
- Parking
- Trailhead
- Multi-Purpose Trails
- Hiking Trails
- Creek Access / Fossils
- Outdoor / Environmental Education
- Camping Equipment
- Nature Play
- Picnicking
- Wildlife Habitat
- Scenic Views
- Woodland Bridge
- Amphitheater
- Shelters
- Restrooms
- Pond Access

B. Main Park / Sunfish Pond



- Park Gateway (secondary)
- Parking
- Trailhead
- Pond Access
- Fishing (ADA Access)
- Shelters
- Restrooms
- Multi-Purpose Trail (paved)
- Hiking Trails
- Nature Play
- Picnicking
- Observation Tower
- Wildlife Habitat
- Camping
- Tree Climbing
- Hammocking
- Forest Bathing

C. Germantown Dam/Old Mill/New Welcome Center



- Park Gateway (primary)
- Parking
- Trailhead
- Visitor Welcome Center / Info
- Shelters
- Restrooms
- Multi-Purpose Trails
- Hiking Trails
- Nature Play
- Fossils
- Picnicking
- Wildlife Habitat
- Water Access / Boat Trailer Parking
- Interpretive Node
- Camping (Old Mill)
- Fitness Stairs / Stations
- Livery Service / Portage Route
- Pedestrian Bridge to Old Mill Area
- Amphitheater
- Bicycle Hub w/ Repair Kiosks

D. High View



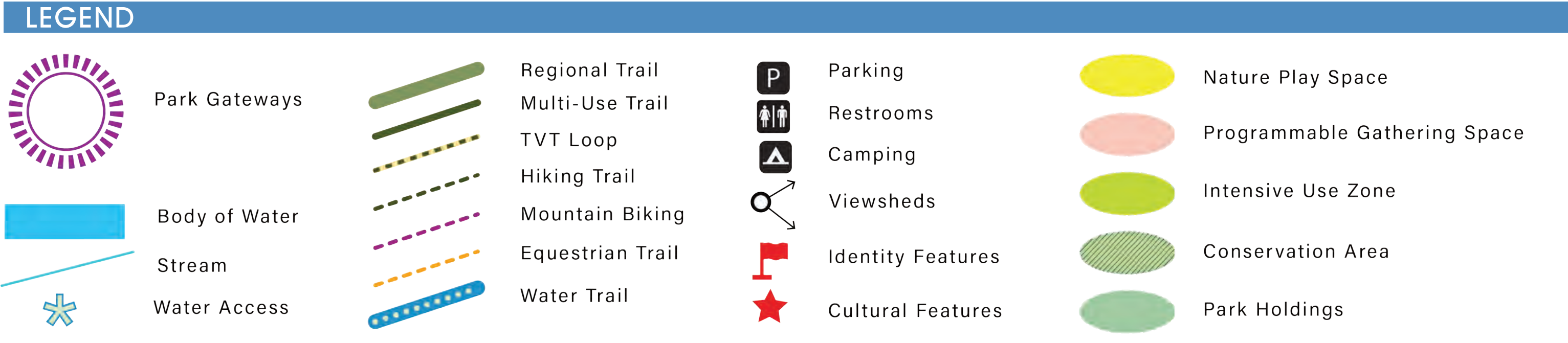
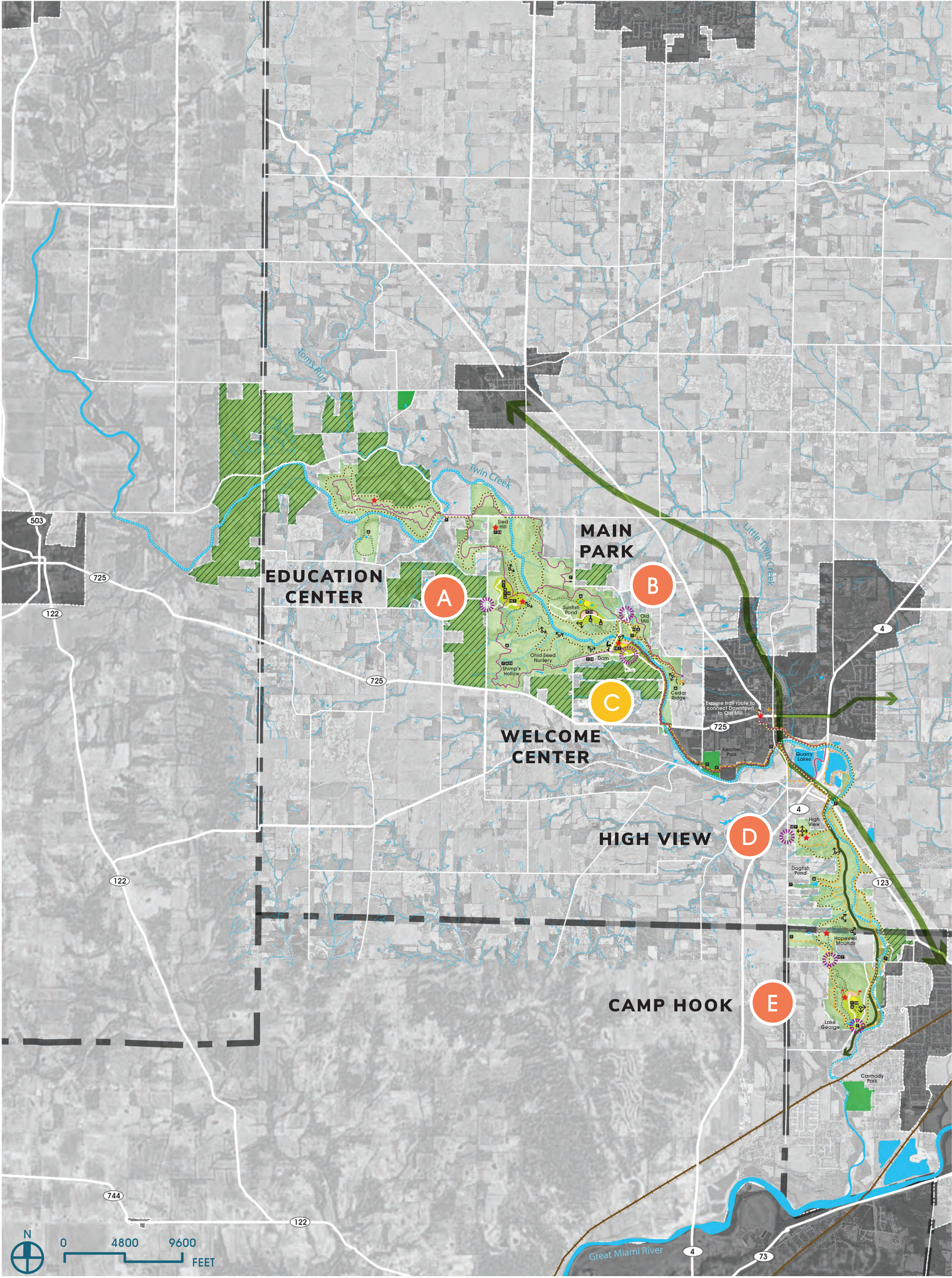
- Park Gateway (secondary)
- Parking
- Trailhead
- Shelters
- Restrooms
- Panoramic Views
- Picnicking
- Wildlife Habitat
- Interpretive Node
- Hiking Trails
- Multi-Purpose Trails
- Hang Gliding
- Kite Flying
- Wind Totems / Sculpture
- Observatory / Stargazing
- Modern Interpretation of Native American mounds
- Land Navigation / Orienteering

E. Camp Hook / Lake George



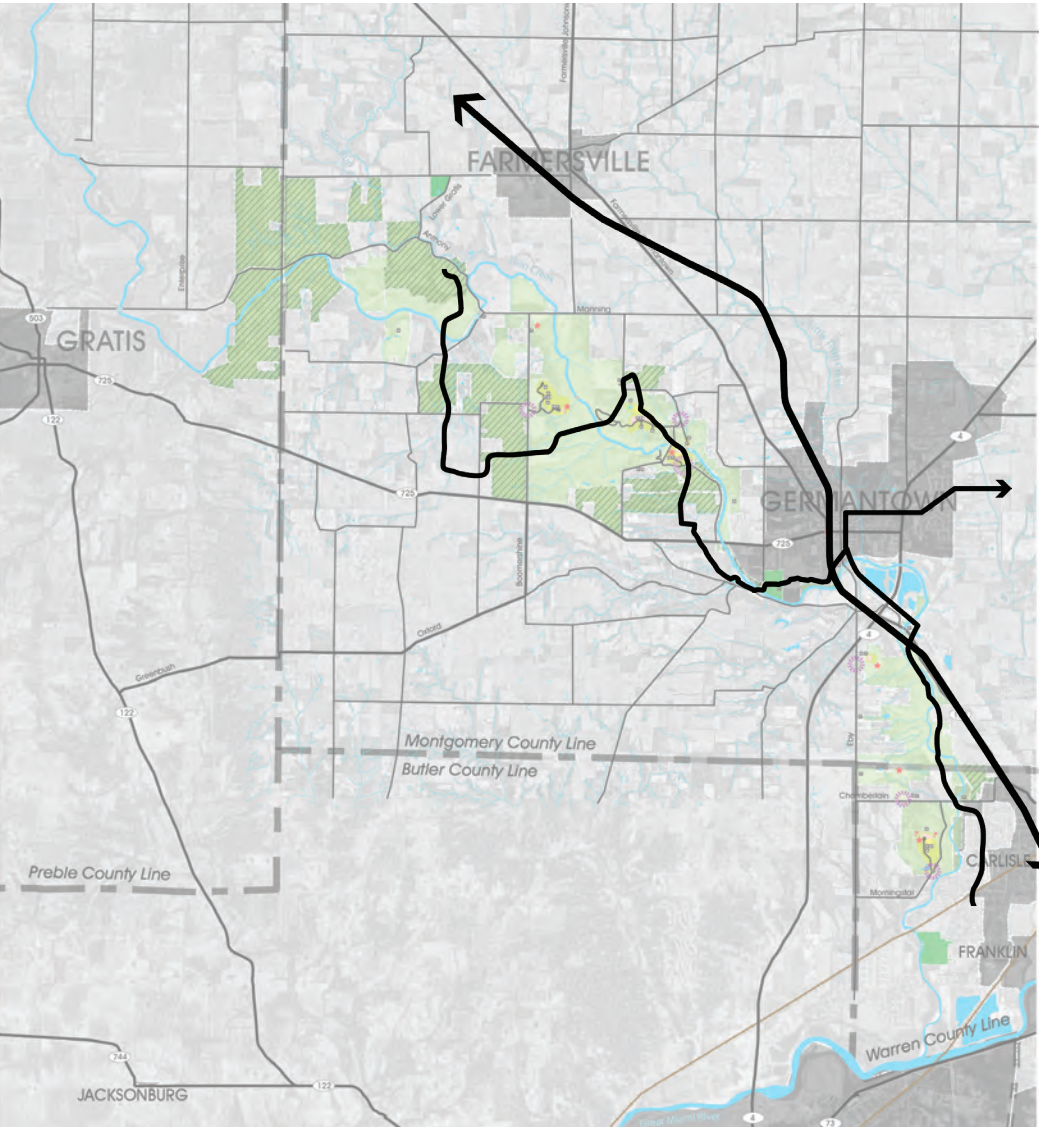
- Park Gateway (secondary)
- Parking
- Trailhead
- Shelters / Reservable Building
- Restrooms
- Picnicking
- Wildlife Habitat
- Interpretive Node
- Camping / Group Camping (cabins/yurts)
- Woodland Ropes Course
- Lake Access / Wetland Forebays
- Hiking Trails
- Amphitheater
- Water Access / Paddle-in Camping
- Event Area

PRELIMINARY SITE PLAN

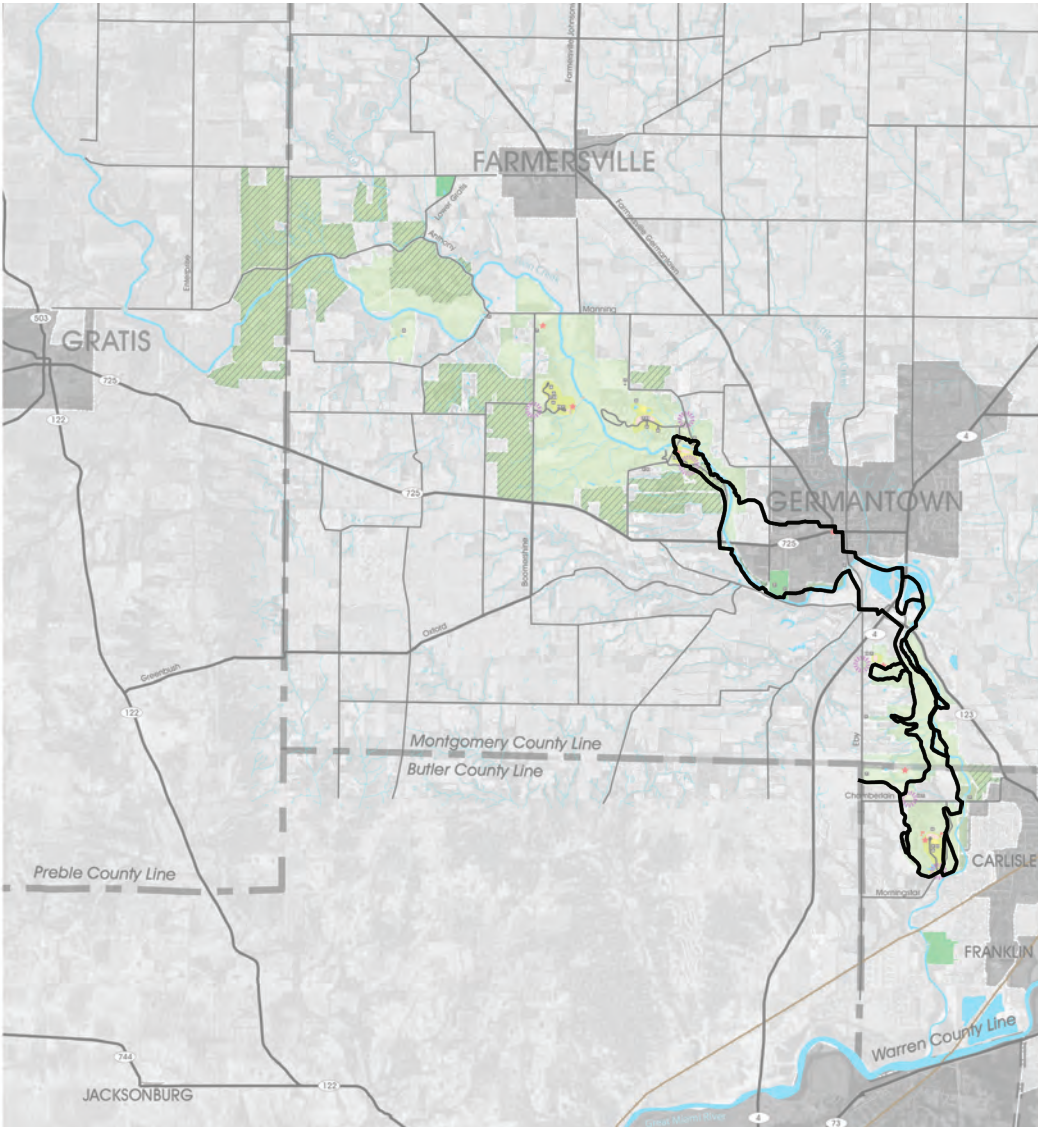


TRAIL NETWORKS

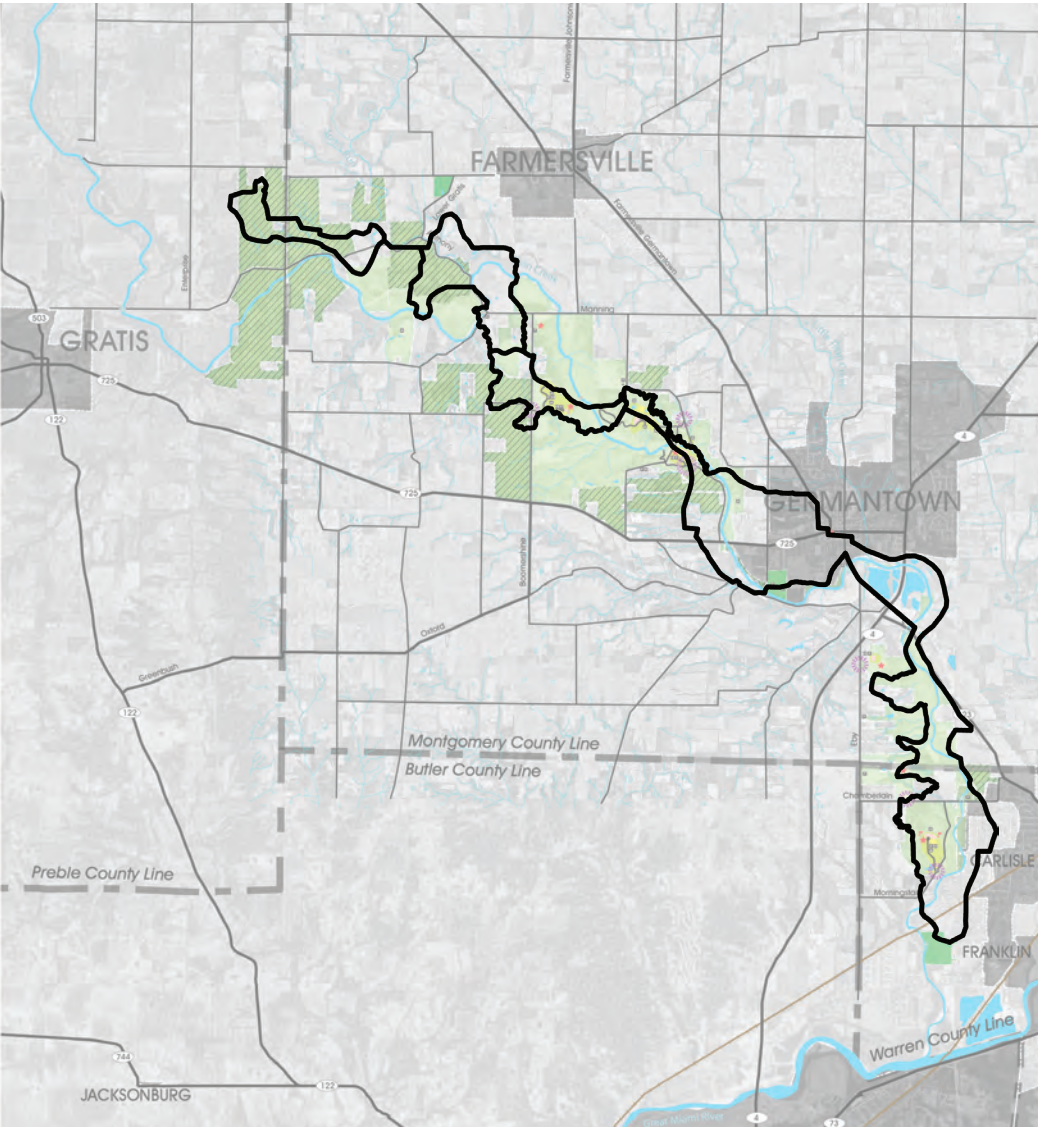
MULTI-PURPOSE TRAIL (12+ mi.)



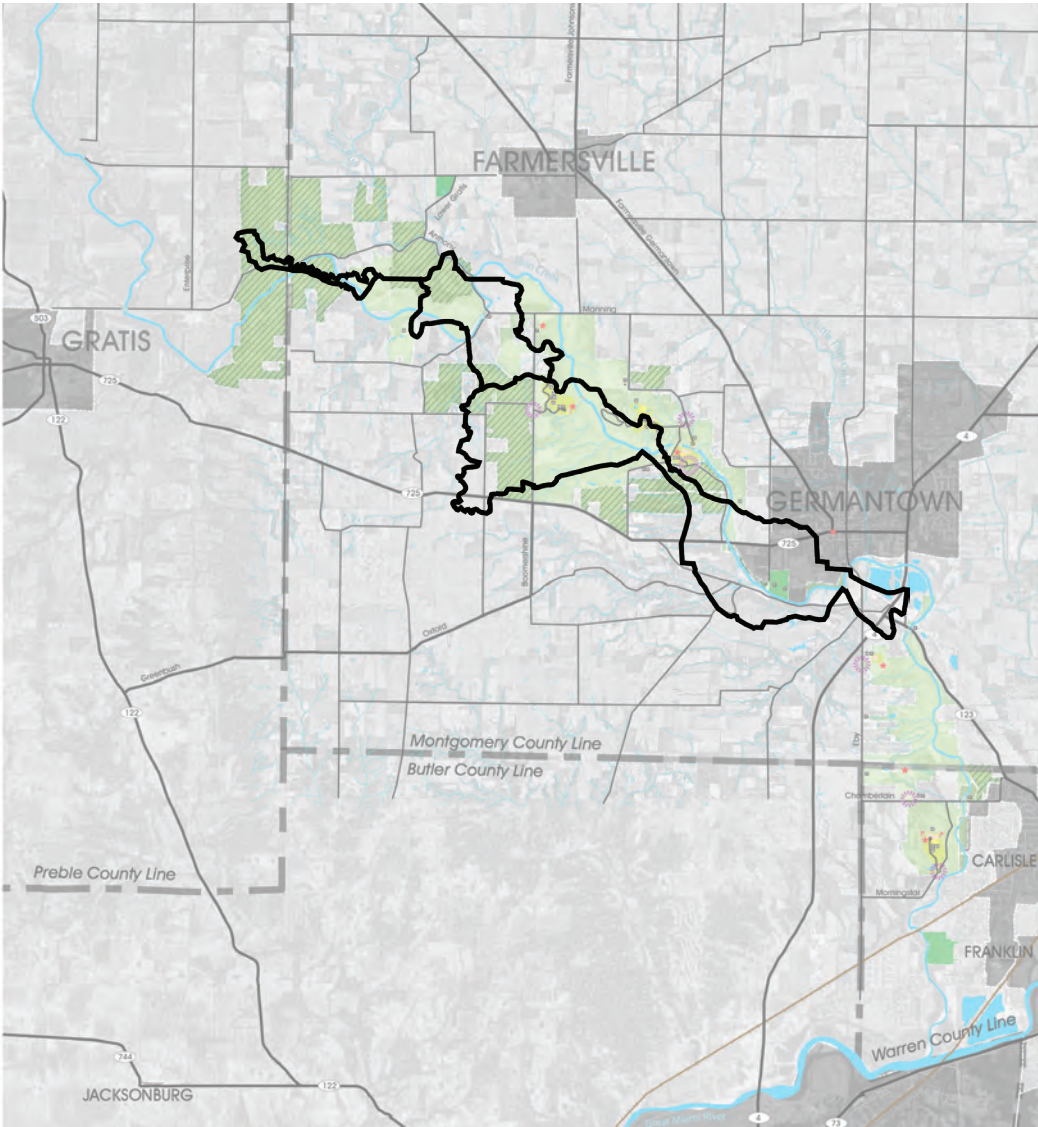
EQUESTRIAN TRAIL (18+ mi.)

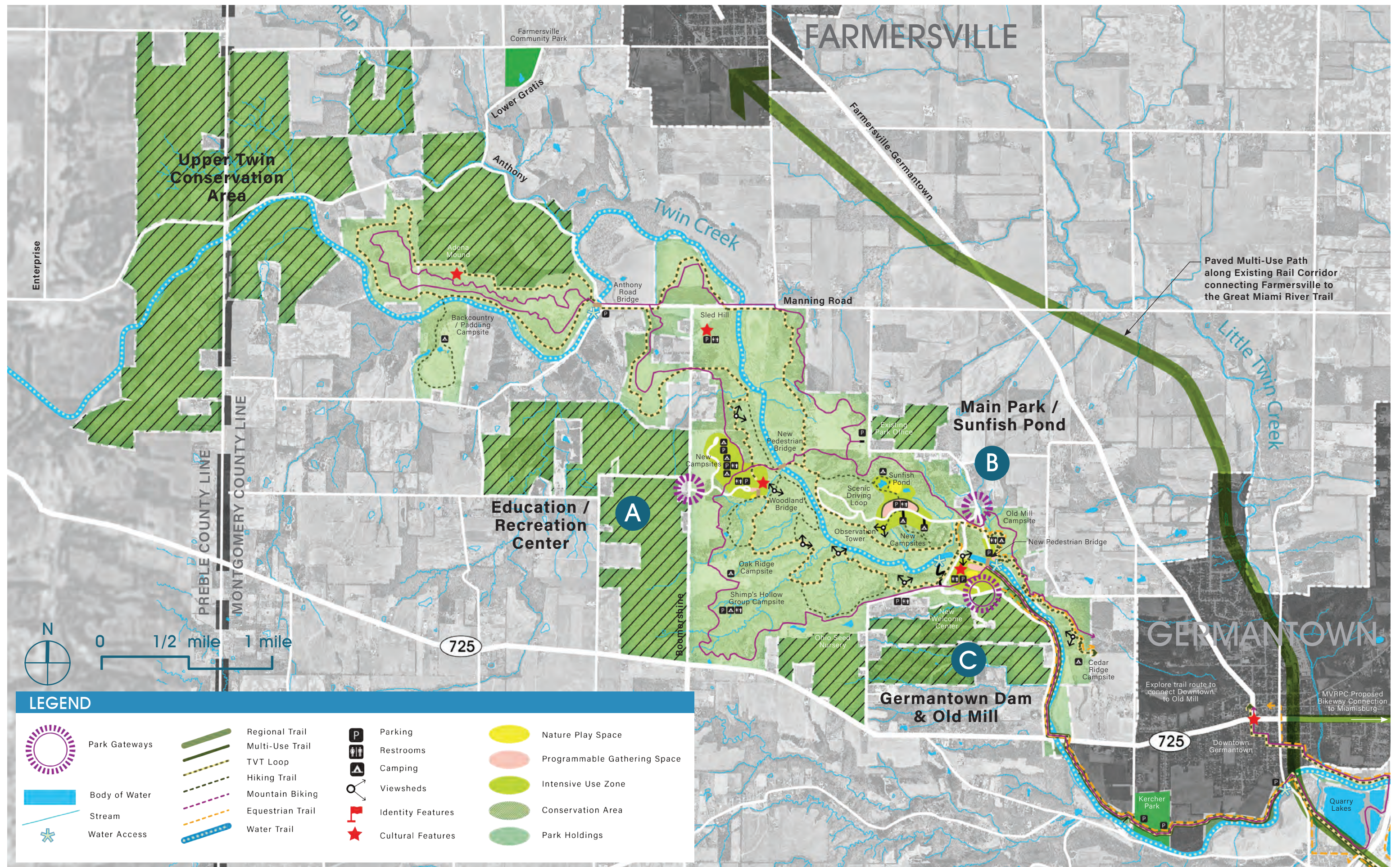


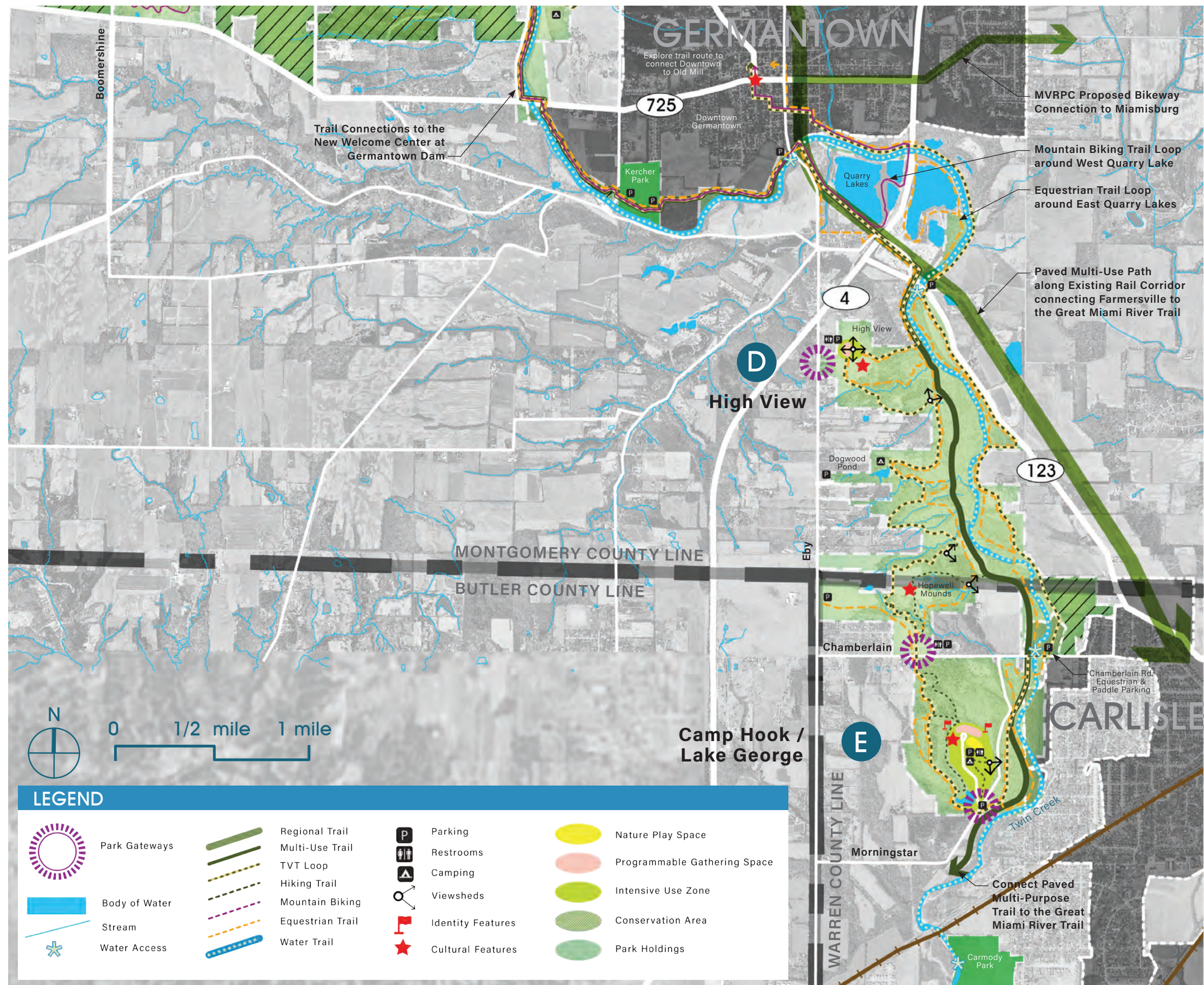
TWIN VALLEY TRAIL (28+ mi.)



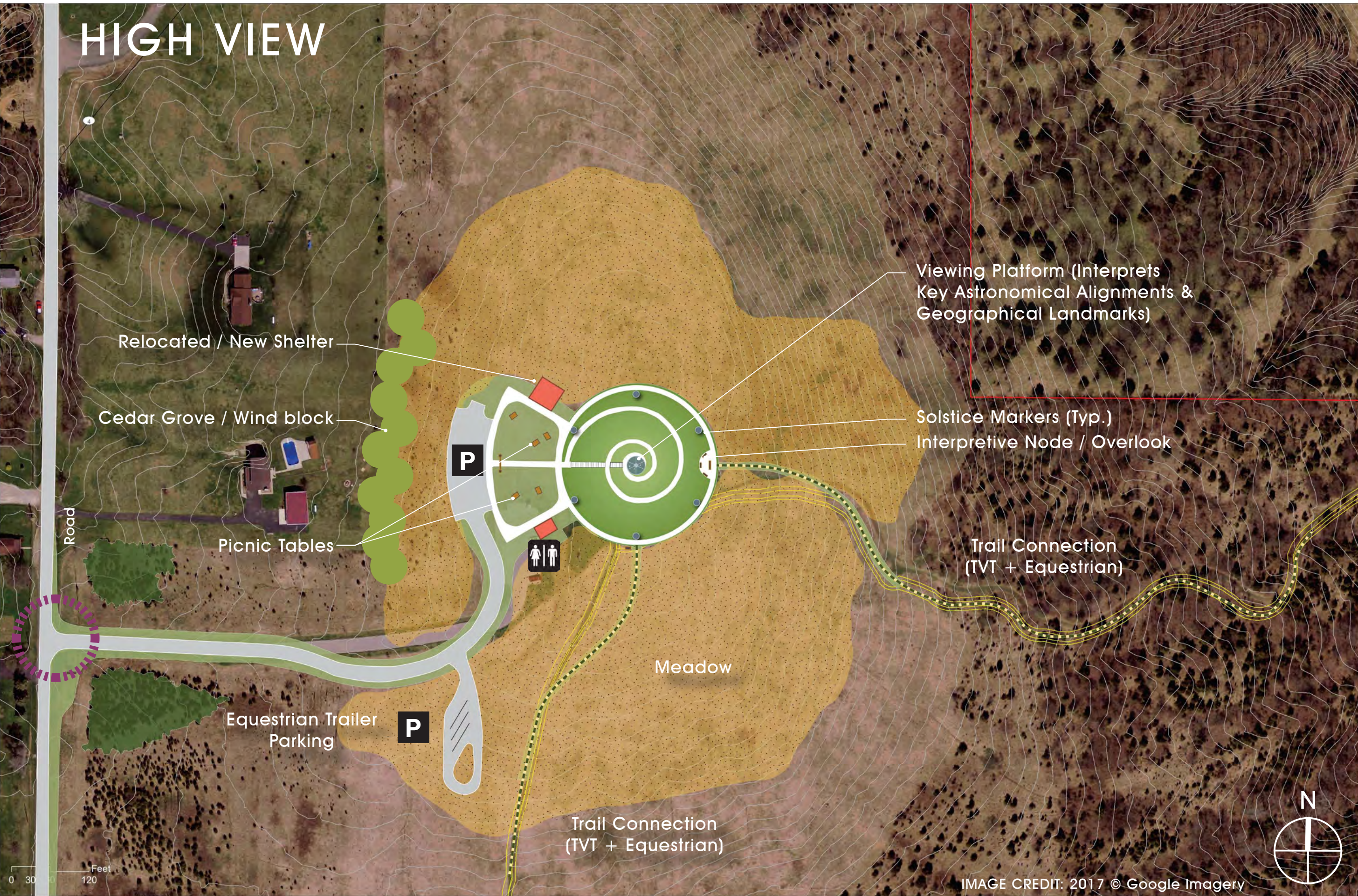
MOUNTAIN BIKING (20+ mi.)







HIGH VIEW



GERMANTOWN DAM / OLD MILL

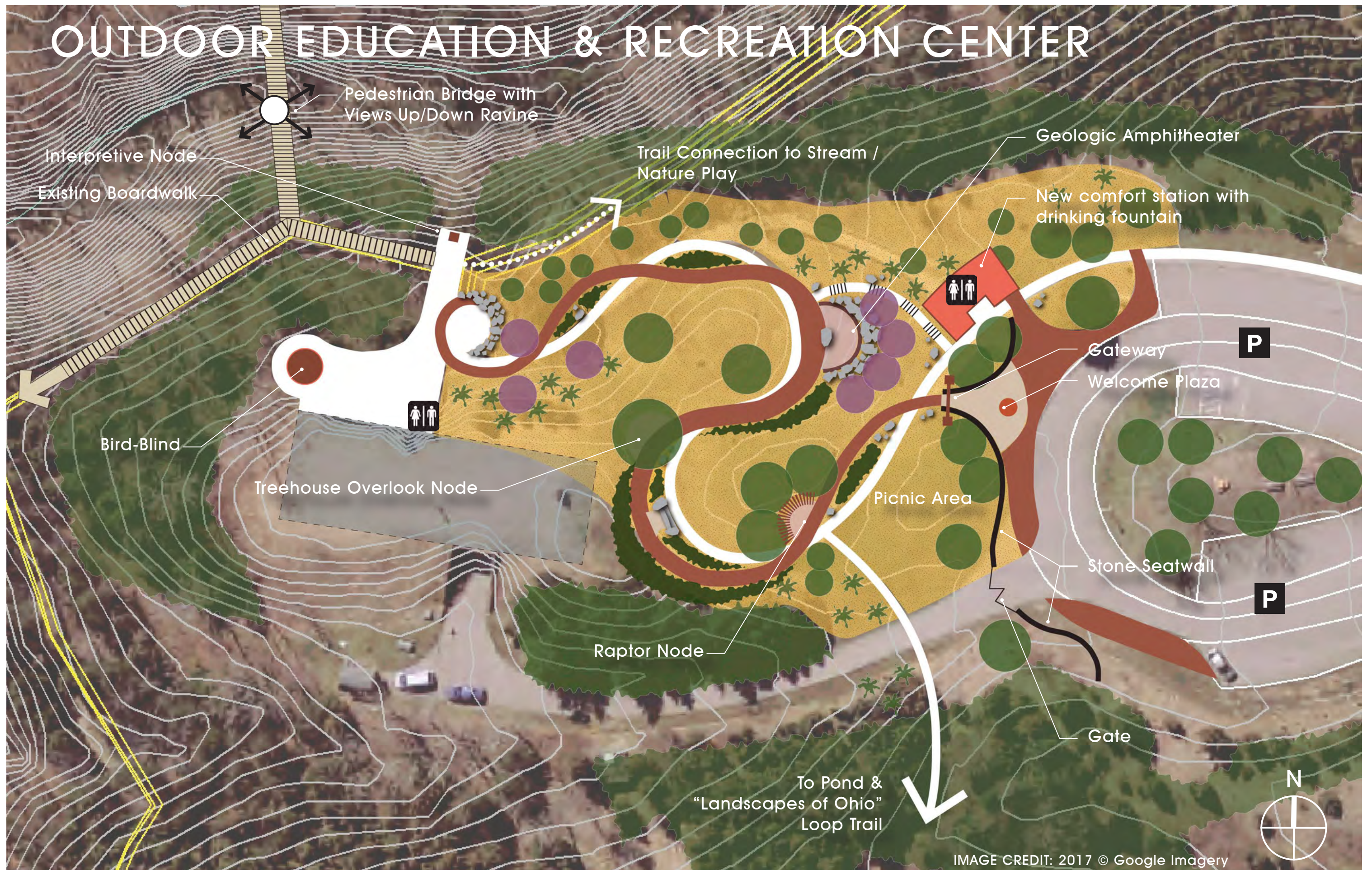


MAIN PARK



IMAGE CREDIT: 2017 © Google Imagery

OUTDOOR EDUCATION & RECREATION CENTER



CAMP HOOK

