

Fishing License

An Ohio license is required for anyone age 16 or older, except as listed below. The license is required to be in your possession while fishing. Licenses are valid from March 1 through the end of February.

Free licenses are available through most license outlets for residents who:

- are 66 years or older
- are physically disabled, who require assistance to fish
- are residents of the state and county institutions
- are holders of "Veteran" license plates
- are veterans who are permanently disabled
- are former prisoners of war

A **fishing license is not required** of persons who are:

- less than 16 years old
- giving assistance to a fisherman who is physically disabled, provided the two persons together are using only one line
- members of the U.S. Armed Forces on annual leave or furlough

A **fishing license is not required at the following MetroParks sites:**

- Carriage Hill MetroPark's Cedar Lake and North Woods Pond
- Possum Creek MetroPark's Argonne Lake and fishing ponds
- Germantown MetroPark's Sunfish Pond
- Eastwood MetroPark's Lagoon and Blue Lake

A Good Angler has respect for the quarry, before and after catching it, and knows there is much more to fishing than taking a limit.



FIVE RIVERS METROPARKS Fishing at Your MetroParks



Fishing Opportunities Abound

The waters of your MetroParks are rich in fish life. Whether you are fishing the Mad River for trout, wading the clear waters of Twin Creek in search of the scrappy smallmouth bass, or doing battle at Possum Creek's fishing lake with a giant catfish, fishing opportunities abound in the Montgomery County area.

For recreation, relaxation or food, fishing is an outdoor activity that can be enjoyed by all members of a family, both young and old. The techniques and equipment used vary from angler to angler and often depend on the species sought. Rod and reel combinations are available in various classes. A good all-round fishing outfit for our area is in the light to medium class range. Line for such an outfit should be eight to ten pound test line.

Rules and Regulations

For the most part, fishing rules in MetroParks facilities parallel state regulations. In some cases, MetroParks rules may be more stringent in order to maintain the best fishing possible. Please check for posted signs before fishing. These may indicate size or number limits and ponds/lakes that are catch and release only. No reptiles or amphibians may be taken from MetroParks sites.

Basic Tackle

Basic tackle includes rods and reels. There are four choices and anglers must determine which is best suited for their fishing style. Spin-cast is a good choice for the beginner. The other three require a bit more skill, but can be mastered with practice.



spin-cast reel



spinning reel



bait-cast reel



fly-cast reel

Baits

Artificial bait: includes plastic worms and jigs, spoons, spinners, plugs, flies

Live bait: includes minnows, insects, crayfish, nightcrawlers (Live bait may not be collected in MetroPark facilities.)



spoon



spinner



plastic worm



fly



plug

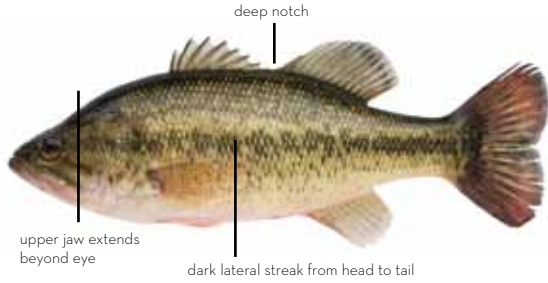


In MetroParks Waters

Largemouth Bass

Location: all lakes/ponds

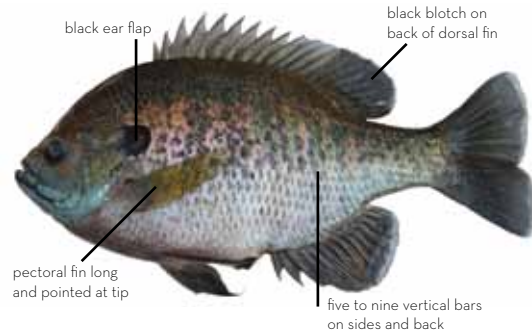
Baits: crayfish, minnows, plugs, spinners



Bluegill

Location: all lakes/ponds

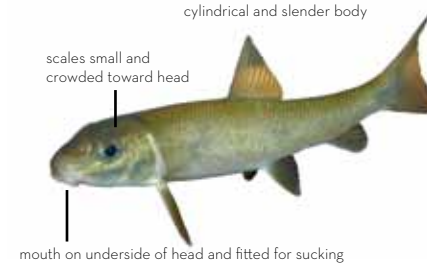
Baits: red worms, insects, jigs



White Sucker

Location: all streams

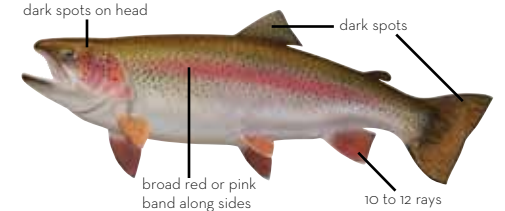
Baits: night crawlers



Rainbow Trout

Location: Mad River, Possum Creek ponds (ponds stocked periodically)

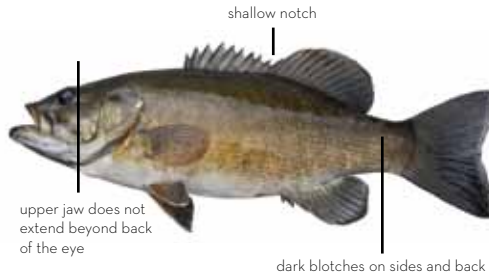
Baits: cheese, worms, corn, small spoons, small spinners, flies



Smallmouth Bass

Location: all streams

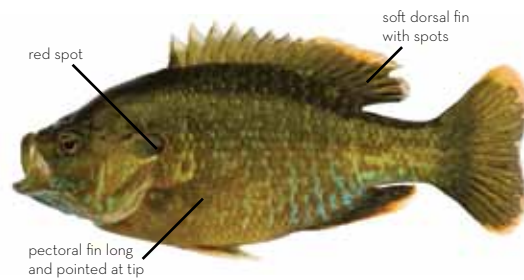
Baits: crayfish, minnows, plugs, spinners, flies



Pumpkinseed

Location: all lakes/ponds, streams

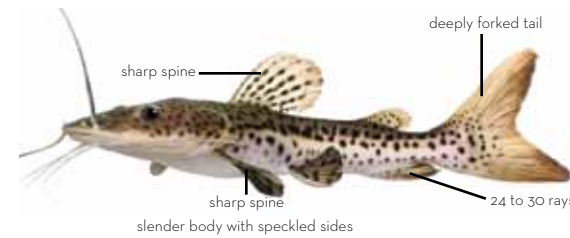
Baits: red worms, maggots, jigs



Channel Catfish

Location: all lakes/ponds, streams

Baits: night crawlers



Bullhead

Location: all lakes/ponds, streams

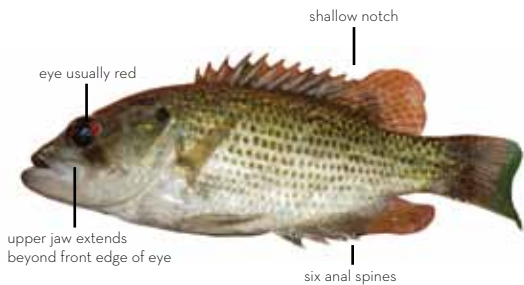
Baits: night crawlers, liver, hot dogs



Rock Bass

Location: all streams

Baits: crayfish, minnows, small spinners



Crappie

Location: all lakes/ponds, streams

Baits: minnows, jigs (1/32 oz. white)



Lake & Pond Fishing

Carriage Hill MetroPark - Cedar Lake (15 acres), North Woods Pond (1 acre)

Eastwood MetroPark - Eastwood Lake (185 acres), Blue Lake (7 acres), Lagoon (12 acres)

Englewood MetroPark - Englewood Lake (75 acres), Stillwater Lake (20 acres)

Germantown MetroPark - Sunfish Pond (1 acre, catch and release only)

Huffman MetroPark - Huffman Lake (44 acres)

Possum Creek MetroPark - Argonne Lake (15 acres), four ponds (three are stocked periodically with trout or catfish)

Stream Fishing

Eastwood MetroPark - Mad River

Englewood MetroPark - Stillwater River

Germantown MetroPark - Twin Creek

Huffman MetroPark - Mad River

River Corridor Bikeway - Great Miami & Stillwater Rivers

Taylorville MetroPark - Great Miami River

Twin Creek MetroPark - Twin Creek

Wesleyan MetroPark - Wolf Creek